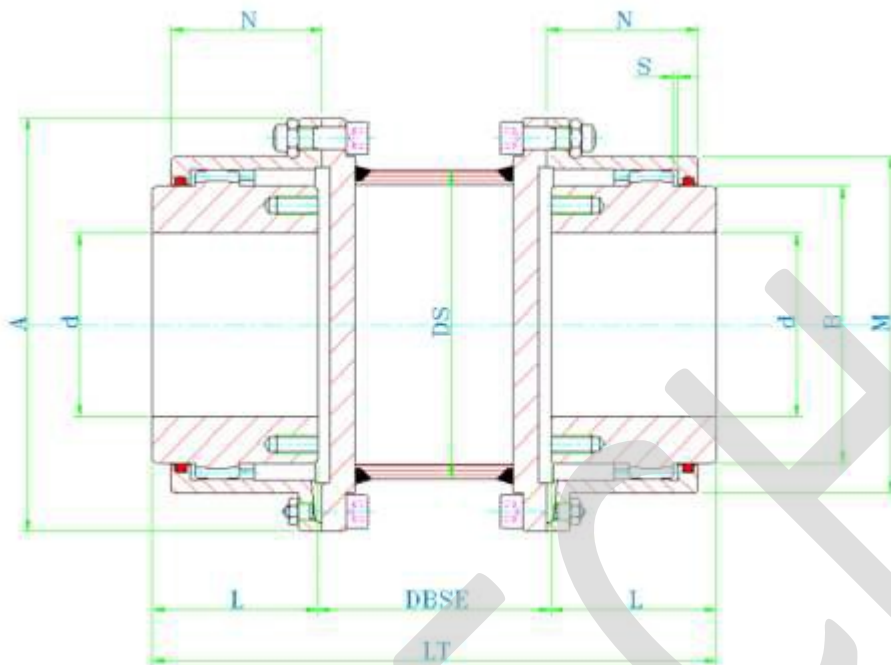


# GEAR COUPLINGS WITH TUBULAR SPACER

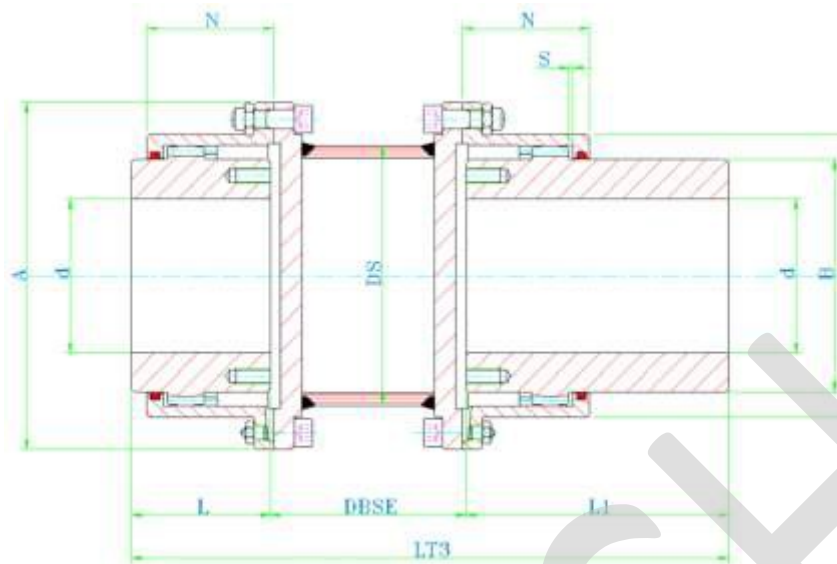
# FGC.T SERIES



SIZE	Tk [kNm]	Tmax [kNm]	MAX SPEED [rpm]	MAX BORE d [mm]	A [mm]	B [mm]	L [mm]	L1 [mm]	M [mm]	N [mm]	DS [mm]
FGC.96.T	1.9	4.2	6000	52	111	68	43	105	82.5	39	82.5
FGC.122.T	2.9	6.8	4550	62	142	86	50	115	104.6	45.5	88.9
FGC.148.T	5.7	14.0	4000	78	168	105	62	130	130.5	59	127
FGC.178.T	9.0	21.5	3900	98	200	132	76	150	158.4	68	139
FGC.203.T	14.5	35.0	3700	112	225	151	90	170	183.4	82.5	168
FGC.236.T	22.8	54.7	3550	132	265	179	105	185	211.5	93	168
FGC.270.T	34.8	83.5	3000	156	300	209	120	215	245.5	106	219
FGC.300.T	45.8	110	2750	174	330	234	135	245	275	118	273
FGC.335.T	70.8	170	2420	190	370	255	150	295	307	138	273
FGC.368.T	85.4	205	2270	210	406	280	175	300	335	154	324
FGC.400.T	150	360	1950	233	439	306	190	305	367	166	355
FGC.460.T	200	480	1730	280	505	356	220	310	423	193	406

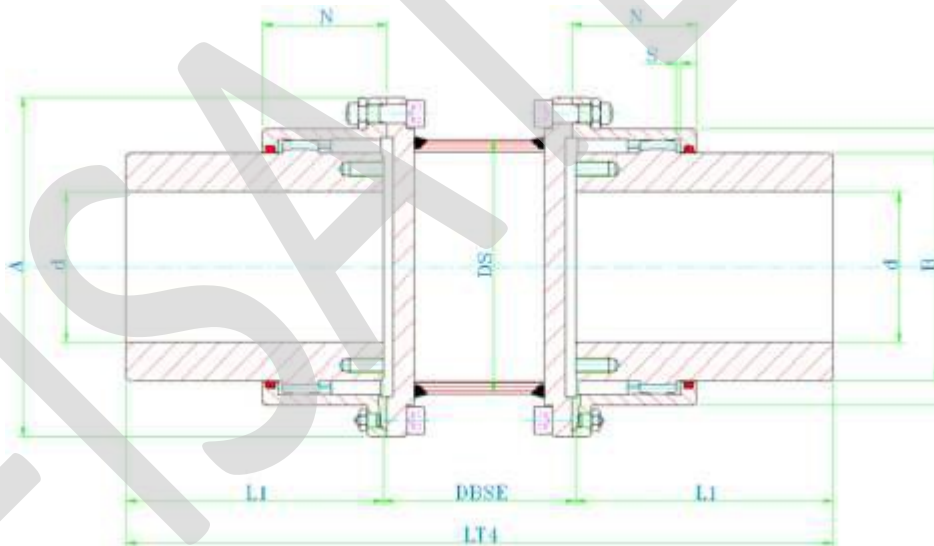
**GEAR COUPLINGS WITH TUBULAR  
SPACER & 1 LONGER HUB**

**FGC.TL SERIES**



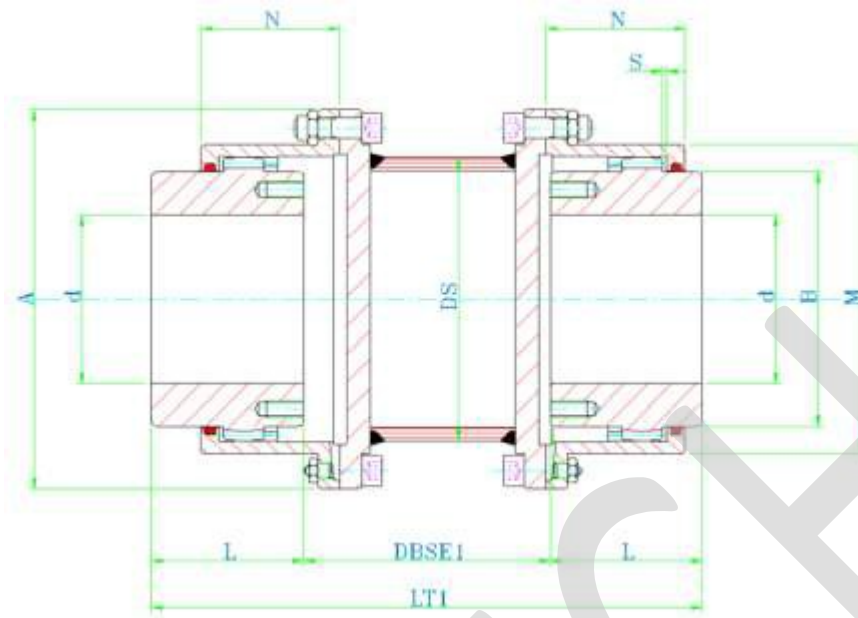
**GEAR COUPLINGS WITH TUBULAR  
SPACER & 2 LONGER HUBS**

**FGC.TLL SERIES**



**GEAR COUPLINGS WITH TUBULAR  
SPACER & 1 REVERSED HUB**

**FGC.TR SERIES**



**GEAR COUPLINGS WITH TUBULAR  
SPACER & BOTH REVERSED HUBS**

**FGC.TRR SERIES**

