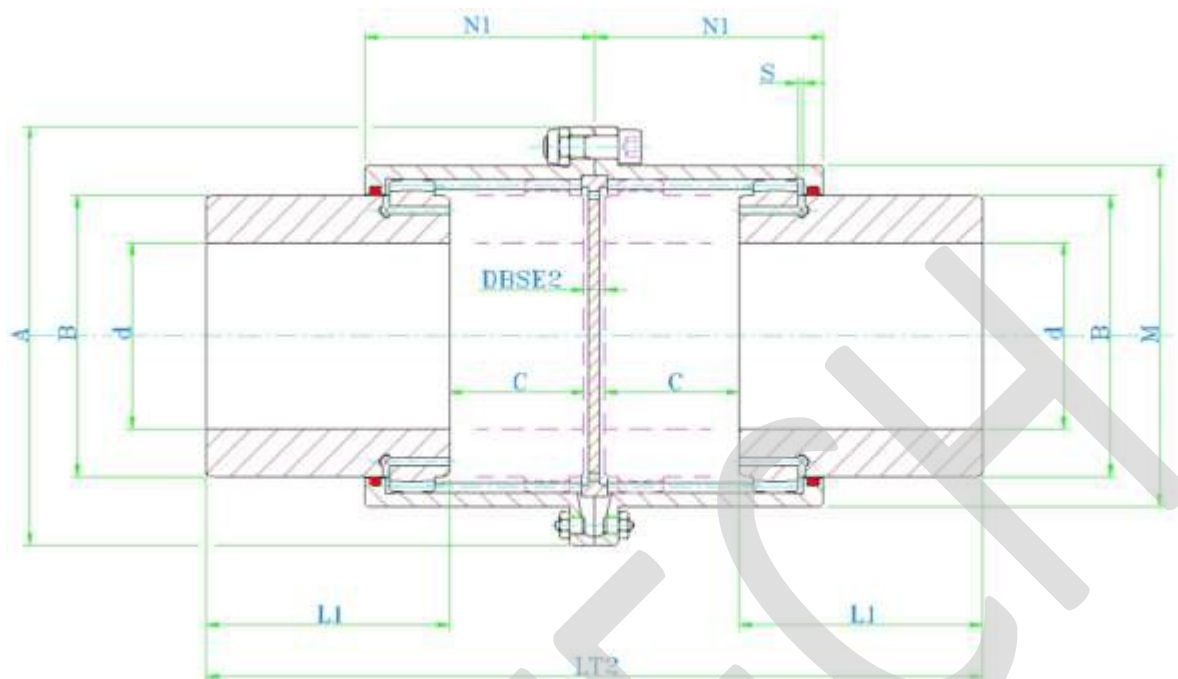


SIZE	Tk [kNm]	Tmax [kNm]	MAX SPEED [rpm]	MAX BORE d [mm]	A [mm]	B [mm]	L [mm]	L1 [mm]	N [mm]	LT1 [mm]	N1 [mm]	DBSE1 [mm]	C [mm]
FGC.96.SG	1.9	4.2	6000	52	111	68	43	100	39	212	92	7	62
FGC.122.SG	2.9	6.8	4550	62	142	86	50	102	45.5	221	98	7	62
FGC.148.SG	5.7	14.0	4000	78	168	105	62	110	59	243	106	7	64
FGC.178.SG	9.0	21.5	3900	98	200	132	76	122	68	278	119	8	72
FGC.203.SG	14.5	35.0	3700	112	225	151	90	130	82.5	300	122	8	72
FGC.236.SG	22.8	54.7	3550	132	265	179	105	144	93	339	137	10	80
FGC.270.SG	34.8	83.5	3000	156	300	209	120	156	106	374	151	10	88
FGC.300.SG	45.8	110	2750	174	330	234	135	162	118	399	158	14	88
FGC.335.SG	70.8	170	2420	190	370	255	150	180	138	446	181	14	102
FGC.368.SG	85.4	205	2270	210	406	280	175	220	154	539	213	14	130
FGC.400.SG	150	360	1950	233	439	306	190	220	166	554	217	14	130
FGC.460.SG	200	480	1730	280	505	356	220	210	193	556	209	16	110

DOUBLE SLIDING GEAR COUPLINGS

FGC.SGG SERIES



SIZE	Tk [kNm]	Tmax [kNm]	MAX SPEED [rpm]	MAX BORE d [mm]	A [mm]	B [mm]	L1 [mm]	N1 [mm]	DBSE2 [mm]	2 x C [mm]
FGC.96.SGG	1.9	4.2	6000	52	111	68	100	92	11	124
FGC.122.SGG	2.9	6.8	4550	62	142	86	102	98	11	124
FGC.148.SGG	5.7	14.0	4000	78	168	105	110	106	11	128
FGC.178.SGG	9.0	21.5	3900	98	200	132	122	119	11	144
FGC.203.SGG	14.5	35.0	3700	112	225	151	130	122	11	144
FGC.236.SGG	22.8	54.7	3550	132	265	179	144	137	14	160
FGC.270.SGG	34.8	83.5	3000	156	300	209	156	151	14	176
FGC.300.SGG	45.8	110	2750	174	330	234	162	158	20	176
FGC.335.SGG	70.8	170	2420	190	370	255	180	181	20	204
FGC.368.SGG	85.4	205	2270	210	406	280	220	213	20	260
FGC.400.SGG	150	360	1950	233	439	306	220	217	20	260
FGC.460.SGG	200	480	1730	280	505	356	210	209	22	220