

art.LKS/VS

MOBILE SUPPORTS WITH MECHANICAL SAFETY DEVICE WITH VISUAL CHECKING “SPECIAL STANDARD” SERIES mod.20/60 of large dimensions in nitrided steel, bronze flange nuts CFB/HVS and CDS/V with lubricator and accessories.

Assembled LKS/VS support

Fitting on the right of the mobile part with the bolts screwed into the bushes inserted in the support*



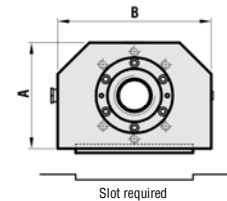
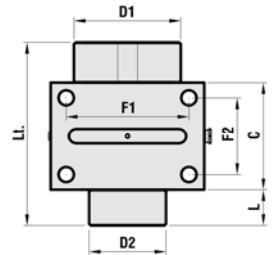
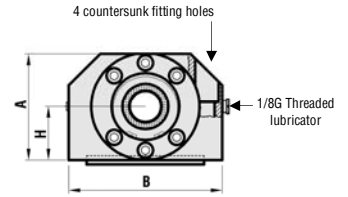
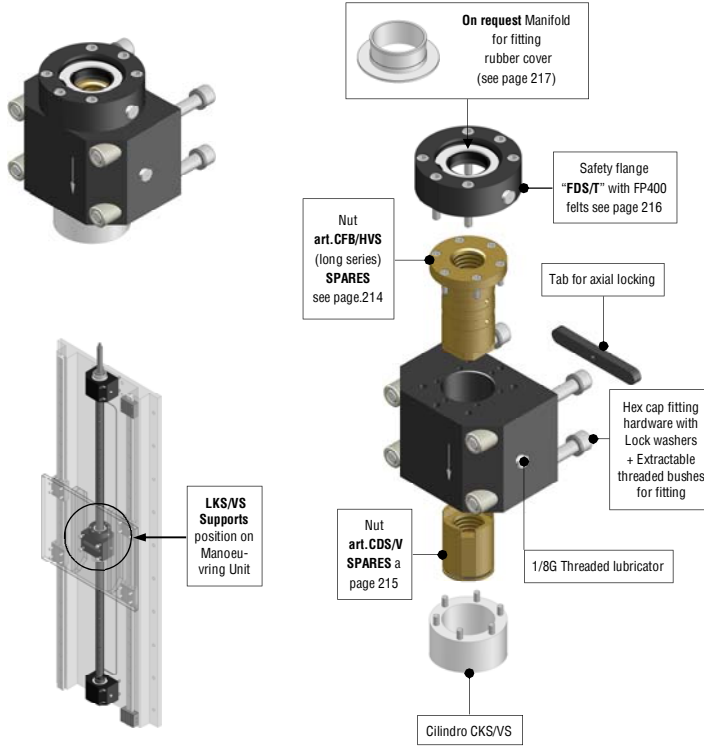
Fitting on the left *



optional: version LKS/VSE



LKS/VS Support - exploded diagram (for vertical/oblique use)



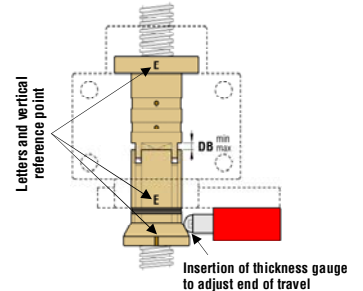
Complete diagrams showing how to fit to the machine are on page 230.

Instructions for correct fitting of the “LKS/VS” support:

- 1) Check that the **reference letters** shown on both nuts are on the same side as indicated in the illustration on the side.
- 2) Ensure that the distance “DB” between the two nuts is within the values indicated in the table below.
- 3) When all the components are fitted ensure that the **reference o-rings** are clearly visible, **completely outside** of the CKS/VS cylinder.
- 4) (Only for VSE) end of travel adjustment for new nuts, with thickness gauge of ...mm inserted between the taper of the nut and the small end of travel wheel, checking that the QSU panel warning light comes on.

TR	20	25	30	35	40	45	50	55	60
DB	3÷3,5	4÷4,5	5÷5,5	5÷5,5	5,5÷6,5	6÷7	6÷7	7÷8	7÷8
Thickness Gauge mm	0,7	0,9	1,0	1,0	1,2	1,4	1,4	1,6	1,6

(OPTIONAL) art.LKS/VSE



- * Extracting the four threaded bushes inserted in support LKS/VS it is possible to fit the bolts from the opposite direction if the necessary threaded holes on the mobile part are created instead of through holes.
- The LKS/VS (LKS/VSE) mobile supports are supplied with an aluminium plate to fit to the machinery as a permanent reference indicating how to check for nut wear (see page 227).
- Lt = Nett size of support with safety flange, excluding additional accessories. Item with right thread available from stock - Approximate weight with accessories and fitting hardware.

NUTS	CODE Dx	ARTICLE Dx	CODE Sx	ARTICLE Sx	A	B	C	L	Lt. (LKS/VS)	H	D1	D2	F1	F2	Hex. Cap screws for fitting	Slot required for fitting	WEIGHT Kg
TR 20x4	302SM3K204R	LKS-VS TR 20x4 R	302SM3K204L	LKS-VS TR 20x4 L	64	100	63	20	116	32,5	□ 60	Ø50	80	43	M10	Ø12x82x4	3,660
TR 25x5	302SM3K255R	LKS-VS TR 25x5 R	302SM3K255L	LKS-VS TR 25x5 L	74	110	70	25	130	37,5	□ 70	Ø60	87	47	M12	Ø14x92x4,5	5,140
TR 30x6	302SM3K306R	LKS-VS TR 30x6 R	302SM3K306L	LKS-VS TR 30x6 L	79	120	79	30	144	40	□ 75	Ø65	97	56	M12	Ø14x102x4,5	6,510
TR 35x6	302SM3K356R	LKS-VS TR 35x6 R	302SM3K356L	LKS-VS TR 35x6 L	99	140	99	40	175	50	Ø100	Ø75	110	68	M14	Ø14x122x4,5	11,750
TR 40x7	302SM3K407R	LKS-VS TR 40x7 R	302SM3K407L	LKS-VS TR 40x7 L	109	150	108	45	189	55	Ø110	Ø80	118	76	M14	Ø16x122x5	14,970
TR 45x8	302SM3K458R	LKS-VS TR 45x8 R	302SM3K458L	LKS-VS TR 45x8 L	119	170	120	40	205	60	Ø120	Ø85	136	86	M16	Ø16x132x5	20,030
TR 50x8	302SM3K508R	LKS-VS TR 50x8 R	302SM3K508L	LKS-VS TR 50x8 L	129	180	130	50	225	65	Ø130	Ø90	146	96	M16	Ø16x142x5	24,760
TR 55x9	302SM3K559R	LKS-VS TR 55x9 R	302SM3K559L	LKS-VS TR 55x9 L	144	195	145	55	253	72,5	Ø145	Ø100	155	105	M18	Ø16x152x5	33,950
TR 60x9	302SM3K609R	LKS-VS TR 60x9 R	302SM3K609L	LKS-VS TR 60x9 L	149	200	145	55	253	75	Ø150	Ø105	160	105	M18	Ø16x162x5	36,260

- The supports above are shown assembled in the Technology KS/VS (Groups (see preceding pages) for which it is possible to calculate the total weight by adding them to the weight of the TR screw using the table on pag 182
- To comply with safety regulations it is obligatory to use the locking tabs, the fitting hardware supplied, and ensuring that the arrows engraved in the supports are all facing in the same direction, which for vertical/oblique movements must be facing downwards.