

art.LKS/VN

MOBILE SUPPORTS WITH MECHANICAL SAFETY DEVICE WITH VISUAL CHECKING “NORMAL STANDARD” SERIES.

mod.20/60 of large dimensions in nitrided steel, bronze flange nuts CFB/ VN and CDS/V with lubricator and accessories.

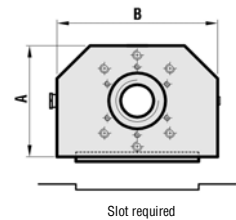
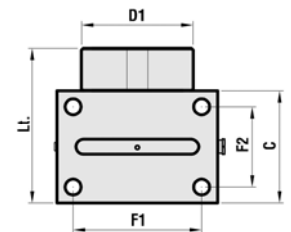
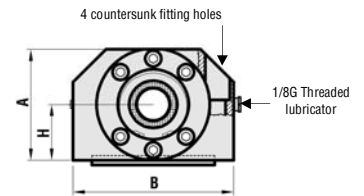
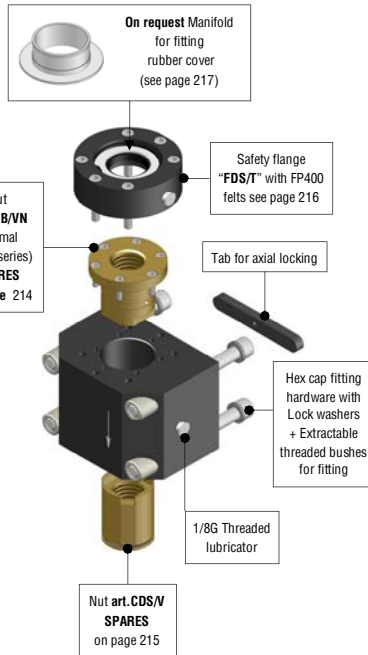
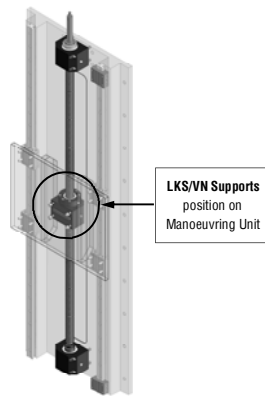
Assembled LKS/VN support.

LKS/VN Support - exploded diagram
(for vertical/oblique use).

Fitting on the right of the mobile part with the bolts screwed into the bushes inserted in the support*

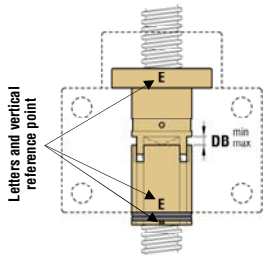


Fitting on the left of the mobile part with the bolts screwed into the bushes inserted in the supports*



Instructions for correct fitting of the “LKS/VN” support:

- 1) Check that the **reference letters** shown on both nuts are on the same side as indicated in the illustration on the side.
- 2) Ensure that the distance “DB” between the two nuts is within the values indicated in the table below.
- 3) When all the components are fitted ensure that the **reference o-rings** are clearly visible, **completely outside** of the LK/VN support.



TR	20	25	30	35	40	45	50	55	60
DB	3÷3,5	4÷4,5	5÷5,5	5÷5,5	5,5÷6,5	6÷7	6÷7	7÷8	7÷8

Complete diagrams showing fitting to machine on page 230.

- * Extracting the four threaded bushes inserted in support LKS/VN it is possible to fit the bolts from the opposite direction if the necessary threaded holes on the mobile part are created instead of through holes.
- The LKS/VN mobile support is supplied with an aluminium plate to fit to the machinery as a permanent reference indicating axial play adjustment (see page 227).
- Lt = Nett size of support with safety flange, excluding additional accessories - Item with right thread available from stock > Approximate weight with accessories and fitting hardware.

NUTS	CODE Dx	ARTICLE Dx	CODE Sx	ARTICLE Sx	A	B	C	Lt. (LKS/VN)	H	D1	F1	F2	Hex. Cap screws for fitting	Slot required for fitting	WEIGHT Kg
TR 20x4	302SM2K204R	LKS-VN TR 20x4 R	302SM2K204L	LKS-VN TR 20x4 L	64	100	63	96	32,5	□ 60	80	43	M10	Ø12x82x4	3,480
TR 25x5	302SM2K255R	LKS-VN TR 25x5 R	302SM2K255L	LKS-VN TR 25x5 L	74	110	70	105	37,5	□ 70	87	47	M12	Ø14x92x4,5	4,860
TR 30x6	302SM2K306R	LKS-VN TR 30x6 R	302SM2K306L	LKS-VN TR 30x6 L	79	120	79	114	40	□ 75	97	56	M12	Ø14x102x4,5	6,140
TR 35x6	302SM2K356R	LKS-VN TR 35x6 R	302SM2K356L	LKS-VN TR 35x6 L	99	140	99	135	50	Ø100	110	68	M14	Ø14x122x4,5	11,050
TR 40x7	302SM2K407R	LKS-VN TR 40x7 R	302SM2K407L	LKS-VN TR 40x7 L	109	150	108	144	55	Ø110	118	76	M14	Ø16x122x5	14,130
TR 45x8	302SM2K458R	LKS-VN TR 45x8 R	302SM2K458L	LKS-VN TR 45x8 L	119	170	120	165	60	Ø120	136	86	M16	Ø16x132x5	19,180
TR 50x8	302SM2K508R	LKS-VN TR 50x8 R	302SM2K508L	LKS-VN TR 50x8 L	129	180	130	175	65	Ø130	146	96	M16	Ø16x142x5	23,630
TR 55x9	302SM2K559R	LKS-VN TR 55x9 R	302SM2K559L	LKS-VN TR 55x9 L	144	195	145	198	72,5	Ø145	155	105	M18	Ø16x152x5	32,450
TR 60x9	302SM2K609R	LKS-VN TR 60x9 R	302SM2K609L	LKS-VN TR 60x9 L	149	200	145	198	75	Ø150	160	105	M18	Ø16x162x5	34,660

- The supports above are shown assembled in the **Tecnology KS/VN** (Groups (see preceding pages) for which it is possible to calculate the total weight by adding them to the weight of the TR screw using the table on pag 182
- To comply with safety regulations it is obligatory to use the locking tabs, the fitting hardware supplied, and ensuring that the arrows engraved in the supports are all facing in the same direction, which for vertical/oblique movements must be facing downwards.