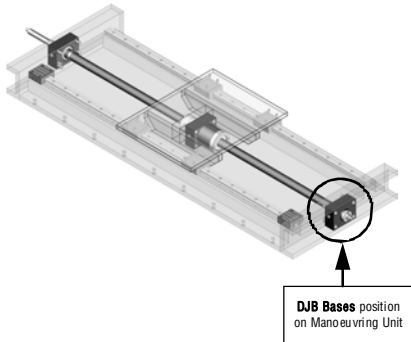
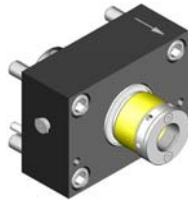


art.DJB

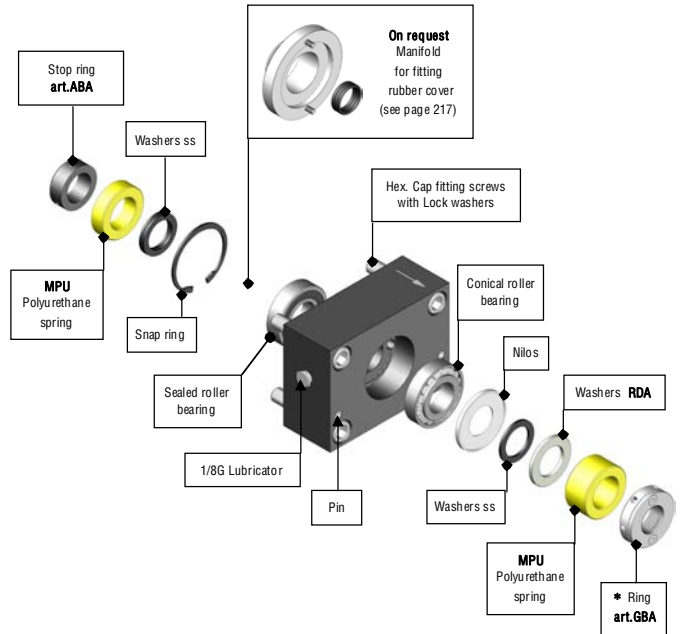
FIXED BASES mod.20/60 in acciaio nitratato, flangiate a grande dimensionamento, con cuscinetti assiali/radiali ed accessori.

Assembled DJB Base

Standard fitting on the machine with through bolts from bottom to top

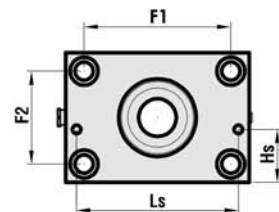
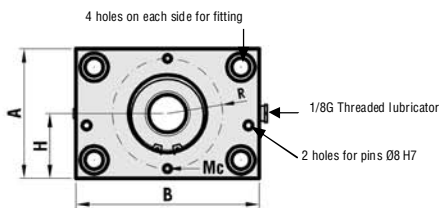


DJB Base - exploded diagram



* Alternatively, for particular technical requirements for manual/horizontal movements, the DJB support is available with **self-locking ring GHA** (please see page 51).

> Complete diagrams showing how to fit to the machine are on page 231



> C = Nett size of Base , excluding ABA, MPU, GBA etc.

> Approximate weight with accessories and fitting hardware.

MODELS	CODE	ARTICLE	A	B	C	H	Ø Internal of bearings	F1	F2	Hex. Cap screws for fitting	Hs	Ls	R	Mc Holes for manifold	WEIGHT Kg
mod. 20	302SF1J20	DJB 20	75	105	39	37,5	15	85	55	M10x50	27	90	27,5	M5	2,420
mod. 25	302SF1J25	DJB 25	85	120	39	42,5	17	95	60	M12x50	30	105	30	M5	3,130
mod. 30	302SF1J30	DJB 30	90	130	39	45	20	105	65	M12x50	30	110	36	M6	3,690
mod. 35 36	302SF1J3536	DJB 35 36	100	140	49	50	25	110	70	M14x60	36	120	41	M6	5,420
mod. 40	302SF1J40	DJB 40	110	150	59	55	30	120	80	M14x70	36	130	45	M6	7,450
mod. 45	302SF1J45	DJB 45	120	170	69	60	35	136	86	M16x80	49	150	51	M8	10,670
mod. 50	302SF1J50	DJB 50	130	180	69	65	40	146	96	M16x80	53	160	56	M8	12,540
mod. 55	302SF1J55	DJB 55	145	195	79	72,5	40	155	105	M18x100	46	170	63	M10	17,640
mod. 60	302SF1J60	DJB 60	150	200	79	75	45	160	110	M18x100	46	175	68	M10	19,200

> The supports above are shown assembled in the **Tecnology J** (Groups (see preceding pages) for which it is possible to calculate the total weight by adding them to the weight of the TR screw using the table on page 182.

> To comply with safety regulations it is obligatory to use the fitting hardware supplied, fitting so that the arrow engraved on the Base is in the same direction as the other Bases in the Group, and where used for vertical/oblique movements the arrows must face downwards.

Photos, diagrams and technical data are the exclusive property of Bimeccanica srl. All rights reserved.