

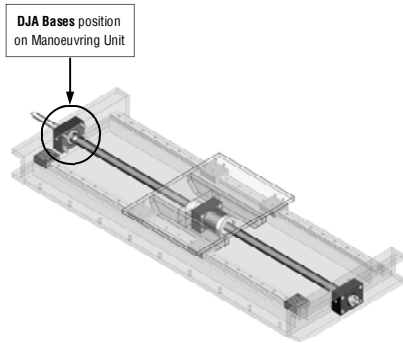
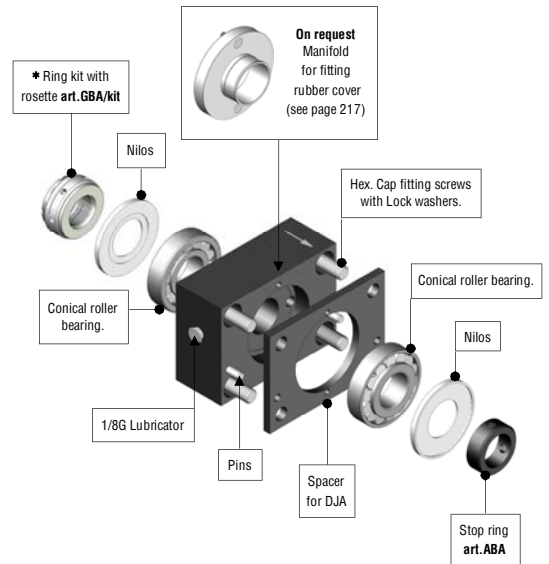
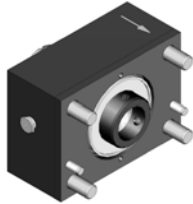
art.DJA

FIXED BASES mod.20/60 of large dimensions, flanged and in nitrided steel, with axial/radial bearings and accessories.

Assembled DJA Base.

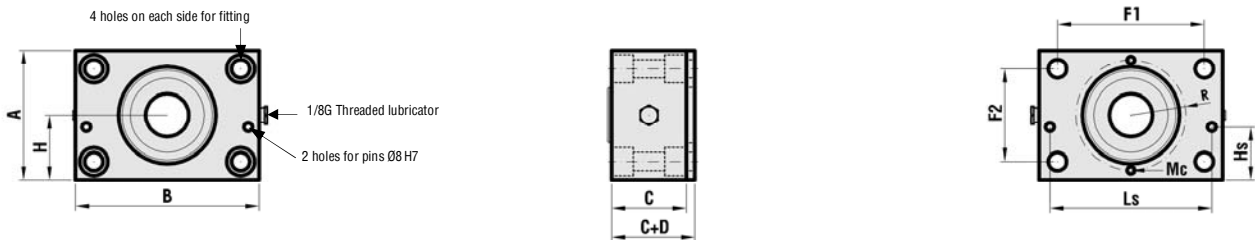
DJA Base - exploded diagram.

Standard fitting on the machine with through bolts from top to bottom.



* Alternatively, for particular technical requirements for manual/horizontal movements, the DJA support is available with **self-locking ring GHA** (please see page 51).

– Complete diagrams showing how to fit to the machine are on page 231



– C+D = Nett size of Base + spacer, excluding ABA, GBA/Kit etc.

– Approximate weight with accessories and fitting hardware.

MODELS	CODE	ARTICLE	A	B	C	C+D	H	Ø Internal of bearings	F1	F2	Hex. Cap screws for fitting	Hs	Ls	R	Mc Holes for manifold	WEIGHT Kg
mod. 20	302SF0J20	DJA 20	75	105	39	44	37,5	17	85	55	M10x55	27	90	27,5	M5	2,540
mod. 25	302SF0J25	DJA 25	85	120	39	44	42,5	20	95	60	M12x55	30	105	30	M5	3,280
mod. 30	302SF0J30	DJA 30	90	130	39	45	45	25	105	65	M12x60	30	110	36	M6	3,810
mod. 35 36	302SF0J3536	DJA 35 36	100	140	49	55	50	30	110	70	M14x70	36	120	41	M6	5,330
mod. 40	302SF0J40	DJA 40	110	150	59	67	55	35	120	80	M14x80	36	130	45	M6	7,610
mod. 45	302SF0J45	DJA 45	120	170	69	77	60	40	136	86	M16x90	49	150	51	M8	10,960
mod. 50	302SF0J50	DJA 50	130	180	69	79	65	45	146	96	M16x90	53	160	56	M8	12,830
mod. 55	302SF0J55	DJA 55	145	195	79	89	72,5	50	155	105	M18x110	46	170	63	M10	17,390
mod. 60	302SF0J60	DJA 60	150	200	79	89	75	55	160	110	M18x110	46	175	68	M10	18,230

– The supports above are shown assembled in the **Tecnology J** (Groups (see preceding pages) for which it is possible to calculate the total weight by adding them to the weight of the TR screw using the table on page 182.
 – To comply with safety regulations it is obligatory to use the fitting hardware supplied, fitting so that the arrow engraved on the Base is in the same direction as the other Bases in the Group, and where used for vertical/oblique movements the arrows must face downwards.

Photos, diagrams and technical data are the exclusive property of Bimeccanica srl. All rights reserved.