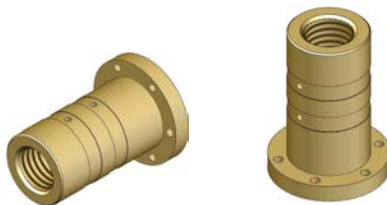


**art.CFB/HL** BRONZE FLANGE NUTS “LONG SERIES” TR20/60 with channel and hole for lubrication.

**MATERIAL:** Bronze CuSn12 UNI 7013-72 R300 N/mm<sup>2</sup>, (HB 90/100)

The CFB/HL listed below are fitted in the respective LK and LJ supports and are available individually as spare parts.



Right threaded nut available from stock.

TRAPEZOIDAL THREAD (Dx)	CODE Dx	ARTICLE Dx	WEIGHT Kg
TR 20x4	302SRC00204R	CFB/HL TR 20x4 Dx	0,320
TR 25x5	302SRC00255R	CFB/HL TR 25x5 Dx	0,500
TR 30x6	302SRC00306R	CFB/HL TR 30x6 Dx	0,640
TR 35x6	302SRC00356R	CFB/HL TR 35x6 Dx	1,210
TR 36x6	302SRC00366R	CFB/HL TR 36x6 Dx	1,170
TR 40x7	302SRC00407R	CFB/HL TR 40x7 Dx	1,490
TR 45x8	302SRC00458R	CFB/HL TR 45x8 Dx	1,770
TR 50x8	302SRC00508R	CFB/HL TR 50x8 Dx	2,100
TR 55x9	302SRC00559R	CFB/HL TR 55x9 Dx	2,785
TR 60x9	302SRC00609R	CFB/HL TR 60x9 Dx	2,925

Left threaded nut made on request.

TRAPEZOIDAL THREAD (Sx)	CODE Sx	ARTICLE Sx	WEIGHT Kg
TR 20x4 Sx	302SRC00204L	CFB/HL TR 20x4 Sx	0,320
TR 25x5 Sx	302SRC00255L	CFB/HL TR 25x5 Sx	0,500
TR 30x6 Sx	302SRC00306L	CFB/HL TR 30x6 Sx	0,640
TR 35x6 Sx	302SRC00356L	CFB/HL TR 35x6 Sx	1,210
TR 36x6 Sx	302SRC00366L	CFB/HL TR 36x6 Sx	1,170
TR 40x7 Sx	302SRC00407L	CFB/HL TR 40x7 Sx	1,490
TR 45x8 Sx	302SRC00458L	CFB/HL TR 45x8 Sx	1,770
TR 50x8 Sx	302SRC00508L	CFB/HL TR 50x8 Sx	2,100
TR 55x9 Sx	302SRC00559L	CFB/HL TR 55x9 Sx	2,785
TR 60x9 Sx	302SRC00609L	CFB/HL TR 60x9 Sx	2,925