

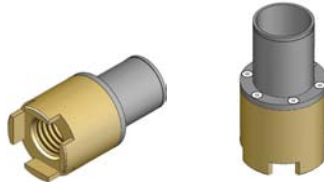
**art.CDS/A SAFETY NUT “WITH SQUARE FRAMEWORK” TR20/60** for Sleeve with bearing “MCC”

**MATERIAL: Bronze** CuSn12 UNI 7013-72 R300 N/mm<sup>2</sup>, (HB 90/100)

**MATERIAL:** Anticorodal aluminium alloy 6026

The **CDS/A** listed below are fitted on the **LKS/A** and **LJS/A** mobile supports of the Tecnology Safety series and are used by us as spare parts when overhauling the safety device for our client, to CE standards, at our factory.

N.B. The replacement of the Safety Nut CDS/A is only made if considered worn at the time the device is being overhauled.



Right threaded nut available from stock.

TRAPEZOIDAL THREAD (Dx)	CODE Dx	ARTICLE Dx	WEIGHT Kg
TR 20x4	302SRC03204R	CDS/A TR 20x4 Dx	0,300
TR 25x5	302SRC03255R	CDS/A TR 25x5 Dx	0,405
TR 30x6	302SRC03306R	CDS/A TR 30x6 Dx	0,520
TR 35x6	302SRC03356R	CDS/A TR 35x6 Dx	0,860
TR 40x7	302SRC03407R	CDS/A TR 40x7 Dx	1,100
TR 45x8	302SRC03458R	CDS/A TR 45x8 Dx	1,450
TR 50x8	302SRC03508R	CDS/A TR 50x8 Dx	1,650
TR 55x9	302SRC03559R	CDS/A TR 55x9 Dx	2,090
TR 60x9	302SRC03609R	CDS/A TR 60x9 Dx	2,320

Left threaded nut made on request.

TRAPEZOIDAL THREAD (Sx)	CODE Sx	ARTICLE Sx	WEIGHT Kg
TR 20x4 Sx	302SRC03204L	CDS/A TR 20x4 Sx	0,300
TR 25x5 Sx	302SRC03255L	CDS/A TR 25x5 Sx	0,405
TR 30x6 Sx	302SRC03306L	CDS/A TR 30x6 Sx	0,520
TR 35x6 Sx	302SRC03356L	CDS/A TR 35x6 Sx	0,860
TR 40x7 Sx	302SRC03407L	CDS/A TR 40x7 Sx	1,100
TR 45x8 Sx	302SRC03458L	CDS/A TR 45x8 Sx	1,450
TR 50x8 Sx	302SRC03508L	CDS/A TR 50x8 Sx	1,650
TR 55x9 Sx	302SRC03559L	CDS/A TR 55x9 Sx	2,090
TR 60x9 Sx	302SRC03609L	CDS/A TR 60x9 Sx	2,320