

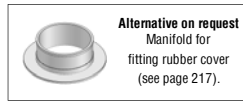
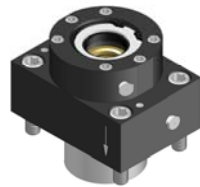
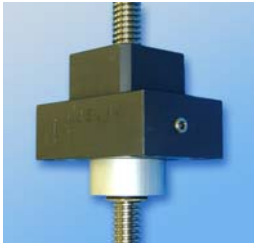
art.LJS/VN

MOBILE BASES WITH MECHANICAL SAFETY DEVICE WITH VISUAL CHECKING “NORMAL STANDARD” SERIES
mod.20/60 of large dimensions, flanged and in nitrided steel, with bronze nuts CFB/ VN and CDS/V, lubricator and accessories.

Assembled LJS/VN Base.

LJS/VN Base - exploded diagram
(for vertical/oblique use).

Standard fitting on mobile shelf with through bolts from top to bottom.



Alternative on request
Manifold for fitting rubber cover (see page 217).

Safety flange “FDS/T” with FP400 felts see page. 216

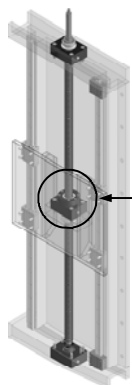
Nut art.CFB/VN (normal length series) SPARES On page.214

Hex. Cap fitting screws with Lock washers

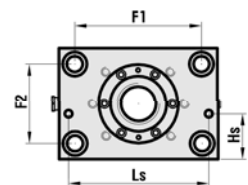
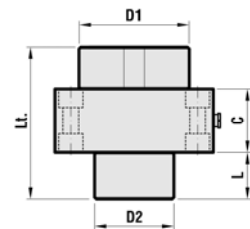
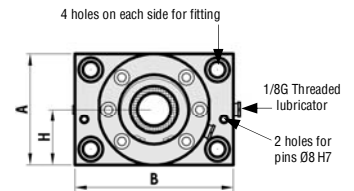
1/8G Threaded lubricator

Nut art.CDS/V SPARES on page.215.

Cylinder CJS/VN

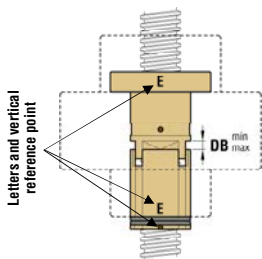


LJS/VN Bases position on Manoeuvring Unit



Instructions for correct fitting of the “LJS/VN” Base:

- 1) Check that the **reference letters** shown on both nuts are on the same side as indicated in the illustration on the side.
- 2) Ensure that the distance “DB” between the two nuts is within the values indicated in the table below.
- 3) When all the components are fitted ensure that the **reference o-rings** are clearly visible, completely outside of the CJS/VN cylinder.



TR	20	25	30	35	40	45	50	55	60
DB	3÷3,5	4÷4,5	5÷5,5	5÷5,5	5,5÷6,5	6÷7	6÷7	7÷8	7÷8

Diagrams showing fitting to the machine are on page 231

– The LJS/VN Mobile Bases supplied with an aluminium plate to fit to the machinery as a permanent reference indicating axial play adjustment (see page 227).

– Lt = Nett size of support with safety flange, excluding additional accessories. Item with right thread available from stock. Approximate weight with accessories and fitting hardware.

NUT	CODE Dx	ARTICLE Dx	CODE Sx	ARTICLE Sx	A	B	C	L	Lt. (LJS/VN)	H	D1	D2	F1	F2	Hex. Cap screws for fitting	HS	LS	WEIGHT Kg
TR 20x4	302SM2J204R	L JS-VN TR 20x4 R	302SM2J204L	L JS-VN TR 20x4 L	75	105	39	24	96	37,5	□ 60	Ø50	85	55	M10x50	27	90	3,080
TR 25x5	302SM2J255R	L JS-VN TR 25x5 R	302SM2J255L	L JS-VN TR 25x5 L	85	120	39	31	105	42,5	□ 70	Ø60	95	60	M12x50	30	105	4,110
TR 30x6	302SM2J306R	L JS-VN TR 30x6 R	302SM2J306L	L JS-VN TR 30x6 L	90	130	39	40	114	45	□ 75	Ø65	105	65	M12x50	30	110	4,750
TR 35x6	302SM2J356R	L JS-VN TR 35x6 R	302SM2J356L	L JS-VN TR 35x6 L	100	140	49	50	135	50	Ø100	Ø75	110	70	M14x60	36	120	7,270
TR 40x7	302SM2J407R	L JS-VN TR 40x7 R	302SM2J407L	L JS-VN TR 40x7 L	110	150	59	49	144	55	Ø110	Ø80	120	80	M14x70	36	130	9,560
TR 45x8	302SM2J458R	L JS-VN TR 45x8 R	302SM2J458L	L JS-VN TR 45x8 L	120	170	69	50	164	60	Ø120	Ø85	136	86	M16x80	49	150	13,560
TR 50x8	302SM2J508R	L JS-VN TR 50x8 R	302SM2J508L	L JS-VN TR 50x8 L	130	180	69	61	175	65	Ø130	Ø90	146	96	M16x80	53	160	15,680
TR 55x9	302SM2J559R	L JS-VN TR 55x9 R	302SM2J559L	L JS-VN TR 55x9 L	145	195	79	66	198	72,5	Ø145	Ø100	155	105	M18x100	46	170	22,510
TR 60x9	302SM2J609R	L JS-VN TR 60x9 R	302SM2J609L	L JS-VN TR 60x9 L	150	200	79	66	198	75	Ø150	Ø105	160	110	M18x100	46	175	24,030

– The supports above are shown assembled in the Technology JS/VN Groups (see preceding pages) for which it is possible to calculate the total weight by adding them to the weight of the TR screw using the table on page 182.

– To comply with safety regulations it is obligatory to use the fitting hardware supplied, fitting so that the arrow engraved on the Base is in the same direction as the other Bases in the Group, and where used for vertical/oblique movements the arrows must face downwards.