

art.LJS/A

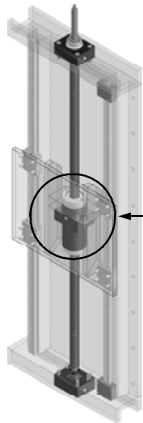
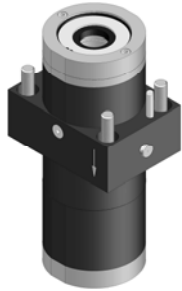
MOBILE BASES WITH AUTOMATICALLY CONTROLLED SAFETY DEVICE TO CE REGULATIONS

mod.20/60 of large dimensions, flanged and in nitrided steel, with bronze nuts CFB/A, CDS/A e CFB/M lubricator and accessories.

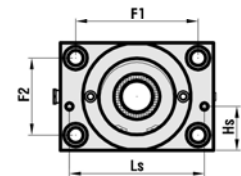
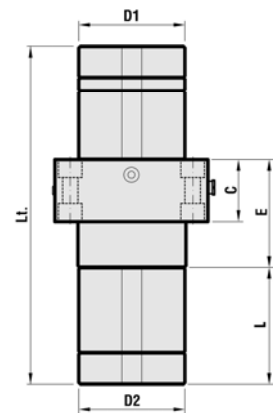
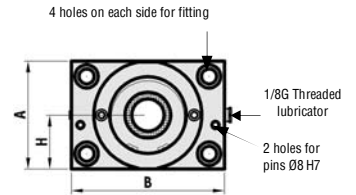
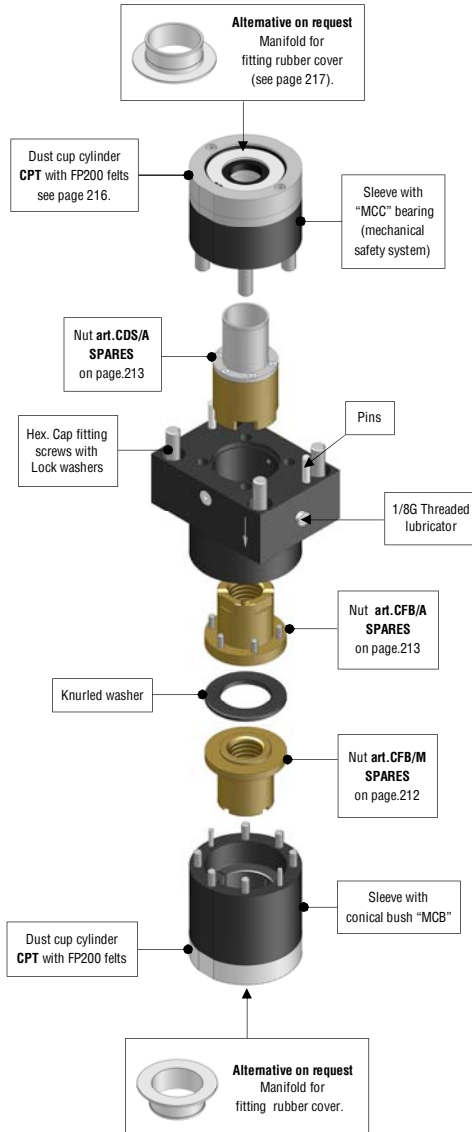
Assembled LJS/A Base.

LJS/A Base - exploded diagram
(for vertical/oblique use).

Standard fitting on mobile shelf with through bolts from bottom to top.



LJS/A Bases position on Manoeuvring Unit



Complete diagrams showing how to fit to the machine are on page .231

- Mobile Base LJS/A is supplied with an aluminium plate to fit to the machinery as a permanent reference indicating the procedure for resetting the device (see page 227).
- Lt = Nett size with dust cup cylinders, excluding possible Manifolds for protective covers. Item with right thread available from stock. **Approximate weight with accessories and fitting hardware.**

NUTS	CODE Dx	ARTICLE Dx	CODE Sx	ARTICLE Sx	A	B	C	E	L	Lt. (LJS/A)	H	D1	D2	F1	F2	Hex. Cap screws for fitting	HS	LS	WEIGHT Kg
TR 20x4	302SM1.J204R	L JS-A TR 20x4 R	302SM1.J204L	L JS-A TR 20x4 L	75	105	39	63	79	210	37,5	Ø75	Ø75	85	55	M10x50	27	90	5,816
TR 25x5	302SM1.J255R	L JS-A TR 25x5 R	302SM1.J255L	L JS-A TR 25x5 L	85	120	39	70	86	228	42,5	Ø85	Ø85	95	60	M12x50	30	105	8,272
TR 30x6	302SM1.J306R	L JS-A TR 30x6 R	302SM1.J306L	L JS-A TR 30x6 L	90	130	39	79	91	245	45	Ø90	Ø90	105	65	M12x50	30	110	9,962
TR 35x6	302SM1.J356R	L JS-A TR 35x6 R	302SM1.J356L	L JS-A TR 35x6 L	100	140	49	99	101	279	50	Ø100	Ø100	110	70	M14x60	36	120	14,793
TR 40x7	302SM1.J407R	L JS-A TR 40x7 R	302SM1.J407L	L JS-A TR 40x7 L	110	150	59	108	106	298	55	Ø110	Ø110	120	80	M14x70	36	130	19,136
TR 45x8	302SM1.J458R	L JS-A TR 45x8 R	302SM1.J458L	L JS-A TR 45x8 L	120	170	69	120	131	376	60	Ø120	Ø120	136	86	M16x80	49	150	28,616
TR 50x8	302SM1.J508R	L JS-A TR 50x8 R	302SM1.J508L	L JS-A TR 50x8 L	130	180	69	130	131	382	65	Ø130	Ø130	146	96	M16x80	53	160	33,606
TR 55x9	302SM1.J559R	L JS-A TR 55x9 R	302SM1.J559L	L JS-A TR 55x9 L	145	195	79	145	149	433	72,5	Ø145	Ø145	155	105	M18x100	46	170	48,928
TR 60x9	302SM1.J609R	L JS-A TR 60x9 R	302SM1.J609L	L JS-A TR 60x9 L	150	200	79	145	149	432	75	Ø150	Ø150	160	110	M18x100	46	175	52,730

- The supports above are shown assembled in the Technology JS/A (Groups (see preceding pages) for which it is possible to calculate the total weight by adding them to the weight of the TR screw using the table on pag 182.
- To comply with safety regulations it is obligatory to use the fitting hardware supplied, fitting so that the arrow engraved on the Base is in the same direction as the other Bases in the Group, and where used for vertical/oblique movements the arrows must face downwards.