

**SAFE MONITORING OF NUT WEAR**

In vertical/oblique lifting using "LXW" supports.

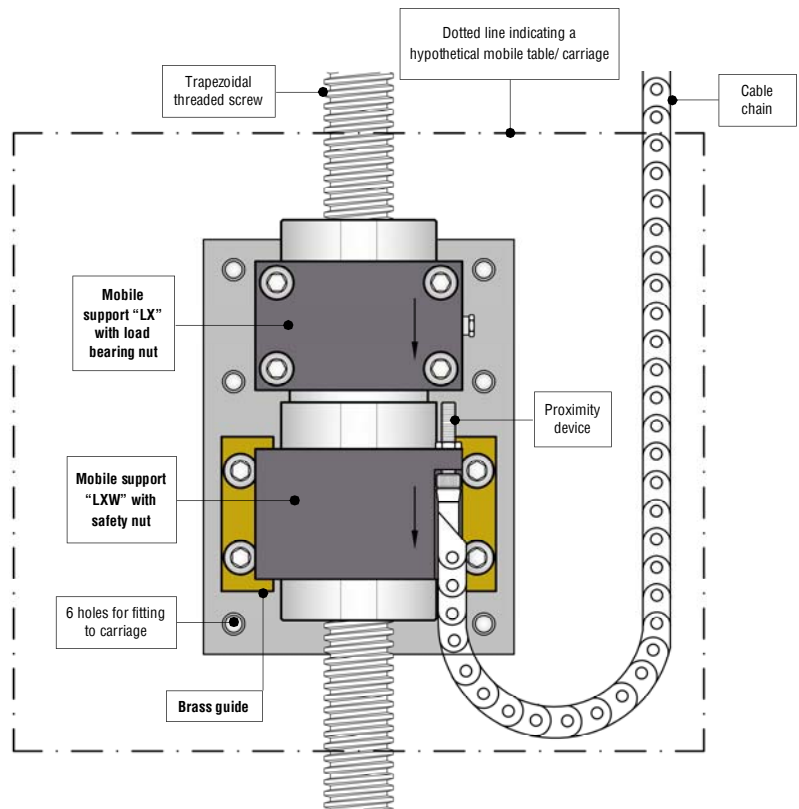
**Vertical/oblique movements**

"Excellent Safety" supports Group for vertical and oblique use, with insertion under the **LX support** with load bearing nut, a **loose safety LXW** that intervenes if the threads of the load bearing nut break so as to avoid the load falling.

The system includes electric proximity signaling the at the moment needed **indicates necessity to change the load bearing nut** and verifies the integrity of the safety nut.

The system can be operated from the **QSU warning panel** or from the general machine panel fitted with test lights and effective alarms. As well as using the test button when starting the Group (from fresh) **a metal spacer half the thickness of the screw pitch should be inserted between the LX support and the proximity device** to check that the warning light comes on.

For greater simplicity and economy the same Group can be supplied without electric signaling but with **direct visual control of the supports** (see plate below).



- **ALUMINIUM PLATES** to apply to the machinery for controlling wear on the nuts. The plates are supplied with the manoeuvring Groups or together with the single support referred to.

**Plate for electric control**

**Bimeccanica S.r.l.**  
Via I. Newton, 5 - 50051 Castelfiorentino (FI) - Italy  
Tel. (+39) 0571-629062 - Fax (+39) 0571-61098

**TRAPEZOIDAL SCREW SUPPORTS FOR LIFTING IN SAFETY WITH ELECTRONIC MONITORING** (for Compact and Excellent Safety models)

<b>(top side)</b> 	<b>(top side)</b> 	<b>(top side)</b> 
<b>Fitting and CHECK 1</b> Integrity of load bearing nut.	<b>CHECK 2</b> Load bearing nut wear <b>STOP</b> with replacement of the nut.	<b>CHECK 3</b> Load bearing without thread <b>ABSOLUTE STOP</b> with replacement of the nut.

**Plate for visual control**

**Bimeccanica S.r.l.**  
Via I. Newton, 5 - 50051 Castelfiorentino (FI) - Italy  
Tel. (+39) 0571-629062 - Fax (+39) 0571-61098

**TRAPEZOIDAL SCREW SUPPORTS FOR LIFTING IN SAFETY WITH VISUAL CHECKING** (for Compact and Excellent Safety models)

<b>(top side)</b> 	<b>(top side)</b> 	<b>(top side)</b> 
<b>Fitting and CHECK 1</b> Integrity of load bearing nut.	<b>CHECK 2</b> Load bearing nut wear <b>STOP</b> with replacement of the nut.	<b>CHECK 3</b> Load bearing without thread <b>ABSOLUTE STOP</b> with replacement of the nut.