

art.LXO

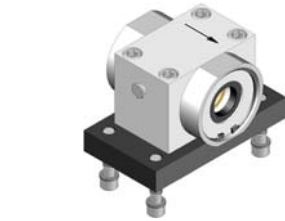
MOBILE SUPPORTS mod.10/40 in anodized aluminium alloy with dust felts, nylon flange nut **CFN/L** and accessories.
(article includes Supports Base **BD LXR**)

LXO support assembled with Supports Base

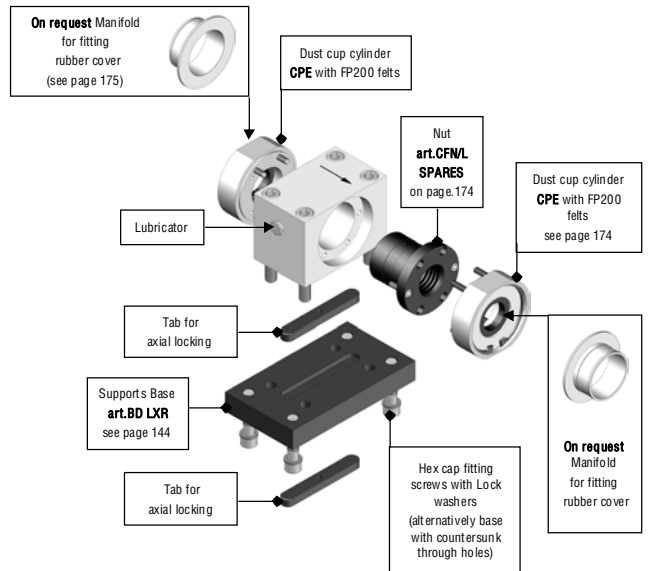
LXO support - exploded diagram



Fitting on mobile support with Supports Base below

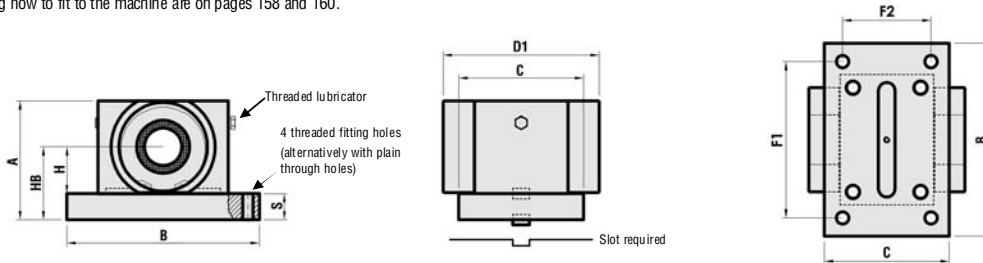


Standard fitting on mobile support with Supports Base on top



> The Supports Bases below are in nitrided steel, or on request they can be made in aluminium alloy.

> Complete diagrams showing how to fit to the machine are on pages 158 and 160.



> D1 = Nett size with Dust Cups, excluding Manifolds for covers - Support with right threaded nut available from stock.

> Approximate weight with accessories, fitting bolts and Supports Base BD LXR

NUT CFN/L	CODE Dx	ARTICLE Dx	CODE Sx	ARTICLE Sx	A	B	C	D1	S	H	HB	F1	F2	Hex screws for fitting	Slot required for fitting	Lubricator thread	WEIGHT Kg
TR 10x2	301SM4102R	LXO TR 10x2 R	301SM4102L	LXO TR 10x2 L	46	85	50	68	12	17,5	29,5	69	34	M6	Ø5x42x3	M6x1	0,430
TR 10x3	301SM4103R	LXO TR 10x3 R	301SM4103L	LXO TR 10x3 L	46	85	50	68	12	17,5	29,5	69	34	M6	Ø5x42x3	M6x1	0,430
TR 12x3	301SM4123R	LXO TR 12x3 R	301SM4123L	LXO TR 12x3 L	51	90	50	69	12	20	32	74	34	M6	Ø6x47x3	M6x1	0,870
TR 14x3	301SM4143R	LXO TR 14x3 R	301SM4143L	LXO TR 14x3 L	59	105	60	75	15	22,5	37,5	85	40	M8	Ø8x52x3,5	M6x1	1,070
TR 14x4	301SM4144R	LXO TR 14x4 R	301SM4144L	LXO TR 14x4 L	59	105	60	75	15	22,5	37,5	85	40	M8	Ø8x52x3,5	M6x1	1,070
TR 16x4	301SM4164R	LXO TR 16x4 R	301SM4164L	LXO TR 16x4 L	64	110	60	80	15	25	40	90	40	M8	Ø10x62x4	1/8G	1,240
TR 18x4	301SM4184R	LXO TR 18x4 R	301SM4184L	LXO TR 18x4 L	64	120	70	85	15	25	40	100	50	M8	Ø10x62x4	1/8G	1,500
TR 20x4	301SM4204R	LXO TR 20x4 R	301SM4204L	LXO TR 20x4 L	69	120	70	92	15	27,5	42,5	100	50	M8	Ø12x72x4	1/8G	1,630
TR 22x5	301SM4225R	LXO TR 22x5 R	301SM4225L	LXO TR 22x5 L	69	120	70	92	15	27,5	42,5	100	50	M8	Ø12x72x4	1/8G	1,630
TR 24x5	301SM4245R	LXO TR 24x5 R	301SM4245L	LXO TR 24x5 L	84	145	80	105	20	32,5	52,5	115	50	M10	Ø14x82x4,5	1/8G	2,900
TR 25x5	301SM4255R	LXO TR 25x5 R	301SM4255L	LXO TR 25x5 L	84	145	80	105	20	32,5	52,5	115	50	M10	Ø14x82x4,5	1/8G	2,900
TR 26x5	301SM4265R	LXO TR 26x5 R	301SM4265L	LXO TR 26x5 L	84	145	80	105	20	32,5	52,5	115	50	M10	Ø14x82x4,5	1/8G	2,900
TR 28x5	301SM4285R	LXO TR 28x5 R	301SM4285L	LXO TR 28x5 L	89	150	80	112	20	35	55	120	50	M10	Ø14x92x4,5	1/8G	3,170
TR 30x6	301SM4306R	LXO TR 30x6 R	301SM4306L	LXO TR 30x6 L	89	150	80	112	20	35	55	120	50	M10	Ø14x92x4,5	1/8G	3,170
TR 32x6	301SM4326R	LXO TR 32x6 R	301SM4326L	LXO TR 32x6 L	89	150	80	112	20	35	55	120	50	M10	Ø14x92x4,5	1/8G	3,170
TR 35x6	301SM4356R	LXO TR 35x6 R	301SM4356L	LXO TR 35x6 L	99	160	100	122	20	40	60	130	70	M10	Ø14x102x4,5	1/8G	4,270
TR 36x6	301SM4366R	LXO TR 36x6 R	301SM4366L	LXO TR 36x6 L	99	160	100	122	20	40	60	130	70	M10	Ø14x102x4,5	1/8G	4,270
TR 40x7	301SM4407R	LXO TR 40x7 R	301SM4407L	LXO TR 40x7 L	109	180	100	127	25	42,5	67,5	145	65	M12	Ø16x112x5	1/8G	5,670

> The supports above are shown assembled in the **Excellent light** Groups (see preceding pages) for which it is possible to calculate the total weight by adding them to the weight of the TR screw using the table on page 165.
> Using the **mobile support LXO without Supports Base** it is necessary to ensure that the same holes are provided as for supports **DXO/A** and **DXO/B** (see preceding pages).
> To comply with safety regulations it is obligatory to use the locking tabs, the fitting hardware supplied, and ensuring that the arrows engraved in the supports are all facing in the same direction, which for vertical/oblique movements must be facing downwards.

Photos, diagrams and technical data are the exclusive property of Bimeccanica srl. All rights reserved.