

art.CFB

BRONZE FLANGE NUTS TR10/80 in Bronze CuSn12 UNI 7013-72 R300 N/mm², (HB 90/100)

Material characteristics: ideal for medium velocity movements, heavy loads, use with lubrication.

The bronze flange nuts are produced by us from either continuous casting bars or from die-cast alloy bars Cu.Sn.12 UNI 7013-72 certified.

This material has a low friction coefficient when sliding on the screw, good wear resistance and low aggressiveness towards the screw with efficient self lubrication from the tin element (a component determining the quality of this alloy). Lubrication, however, is essential for achieving maximum performance and for this we recommend looking at the lubricants in our *Technical Catalogue GDM* (www.bimeccanica.it). This type of nut is certainly the most popular, usable for medium/high speeds with heavy loads and with excellent results for smooth sliding to give perfect mechanical transmission (see pages 14-17 for maximum load and speed details). As can be seen below **this type of nut is ready for accessories with which multiple applications are possible with guaranteed longevity and safety.**

The technical characteristics are similar to the bronze cylinders, described further ahead, in that they are made from the same alloy. In our standard series of flange nuts they are certainly the most complete; the flange, of sufficient dimensions, has the double mechanical function of rendering it extremely easy to fit with interchangeability and at the same time, **if mounted correctly with the flange sustaining the load**, makes the perfect mechanical application also have the maximum stability. Used vertically, with medium and heavy loads, the flange must be positioned under the support table, or else mounted above but adding a **Safety Flange FDS** (see pages 66-67) which, other than giving added support of the load, acts as an accessory to clean the thread profile. As illustrated in the diagram below one can achieve the complete cleaning of the screw thread profile and that of the nut by adding **Dust Cups BP** (see pages. 68-69) with the possibility of adding a flexible protective rubber cover for the screw.

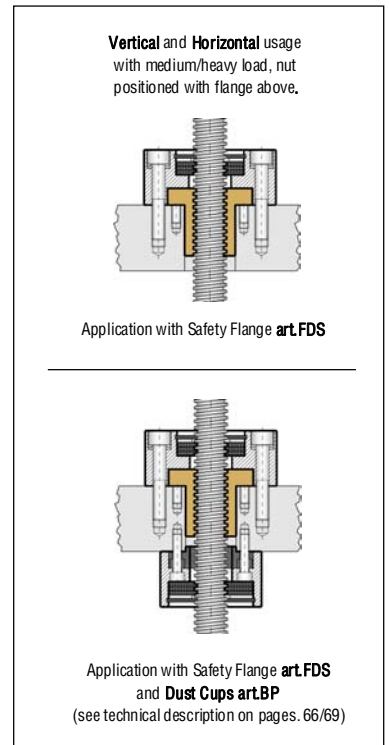
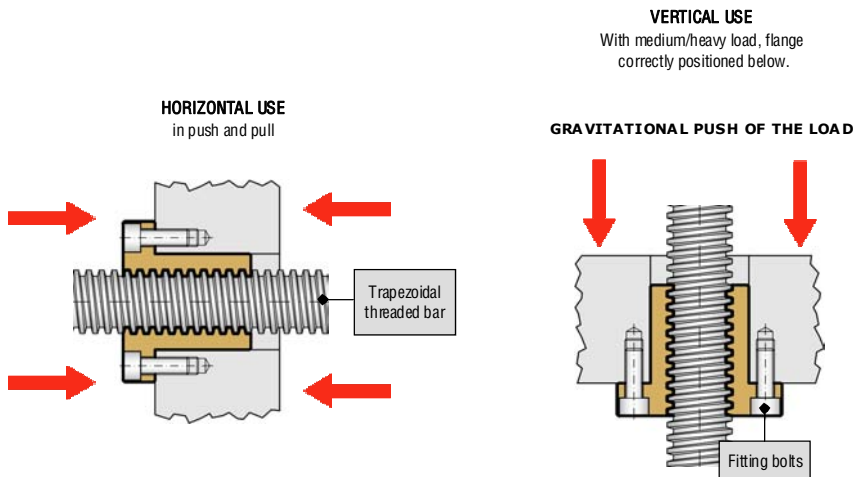
For particularly stressed applications we recommend the use of **Long bronze flange nuts of the "CFB/H" series** listed on the following pages.



The CFB are also available from stock **WITHOUT FITTING HOLES.**

• **HORIZONTAL AND VERTICAL APPLICATION:**

Cylindrical seat with mechanical fastening of the flange



For lubricating we suggest a transversal hole on the support/threaded nut to take a grease nipple or a tube.

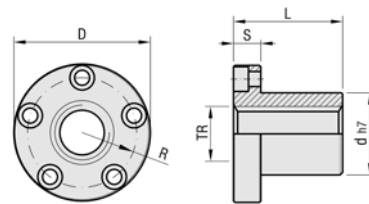
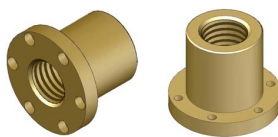
For the CFB with hole and lubrication channel see spares for the Excellent Steel transmission group in *Technical Catalogue GDM* (www.bimeccanica.it)

BEFORE DECIDING ON THE TYPE OF NUT TO USE, SEE DRIVE TRANSMISSION GROUPS = TECHNICAL CATALOGUE GDM (www.bimeccanica.it)

NUTS/LEAD NUTS



art.CFB "NORMAL SERIES" BRONZE FLANGE NUTS TR10/80 in Bronze CuSn12 UNI 7013-72 R300 N/mm², (HB 90/100)



Available with lubrication channel and hole **art.CFB/L** see Excellent Steel spares, **Technical Catalogue GDM**

	TRAPEZOIDAL THREAD 7H	CODE	ARTICLE	D ⁰ _{+0,2}	d h7	L	NUMBER OF THREADS	S	R	SCREWS FOR FIXING	NUMBER OF HOLES	Dm min. Ø MEDIO mm	Dm max Ø MEDIO mm	WEIGHT Kg	TURNS & LOADS max
RIGHT THREAD (7H)	* TR 10x2	MG102R	CFB TR 10x2 Dx	32	16	20	10	8	12	M4	3	9,00	9,25	0,062	SEE GENERAL PRODUCT GUIDE AND BASIC THEORETICAL TABLE ON PAGES 14-17
	TR 10x3	MG103R	CFB TR 10x3 Dx	32	16	20	6,7	8	12	M4	3	8,50	8,78	0,062	
	TR 12x3	MG123R	CFB TR 12x3 Dx	35	18	22	7,3	8	13	M4	4	10,50	10,80	0,072	
	* TR 14x3	MG143R	CFB TR 14x3 Dx	40	20	25	8,3	10	15	M5	4	12,50	12,80	0,110	
	TR 14x4	MG144R	CFB TR 14x4 Dx	40	20	25	6,3	10	15	M5	4	12,00	12,35	0,110	
	TR 16x4	MG164R	CFB TR 16x4 Dx	42	22	30	7,5	10	16	M5	4	14,00	14,35	0,130	
	TR 18x4	MG184R	CFB TR 18x4 Dx	45	25	35	8,7	10	17,5	M5	4	16,00	16,35	0,165	
	TR 20x4	MG204R	CFB TR 20x4 Dx	50	30	40	10	10	20	M5	5	18,00	18,35	0,245	
	* TR 22x5	MG225R	CFB TR 22x5 Dx	50	30	40	8	10	20	M5	5	19,50	19,87	0,225	
	* TR 24x5	MG245R	CFB TR 24x5 Dx	60	35	45	9	12	24	M6	5	21,50	21,90	0,400	
	TR 25x5	MG255R	CFB TR 25x5 Dx	60	35	45	9	12	24	M6	5	22,50	22,90	0,385	
	* TR 26x5	MG265R	CFB TR 26x5 Dx	60	35	45	9	12	24	M6	5	23,50	23,90	0,370	
	* TR 28x5	MG285R	CFB TR 28x5 Dx	65	40	50	10	12	26,5	M6	5	25,50	25,90	0,500	
	TR 30x6	MG306R	CFB TR 30x6 Dx	65	40	50	8,3	12	26,5	M6	5	27,00	27,45	0,480	
	* TR 32x6	MG326R	CFB TR 32x6 Dx	65	40	50	8,3	12	26,5	M6	5	29,00	29,45	0,460	
	TR 35x6	MG356R	CFB TR 35x6 Dx	75	50	60	10	12	31,5	M6	6	32,00	32,45	0,830	
	TR 36x6	MG366R	CFB TR 36x6 Dx	75	50	60	10	12	31,5	M6	6	33,00	33,45	0,800	
	TR 40x7	MG407R	CFB TR 40x7 Dx	80	55	65	9,3	12	34	M6	6	36,50	36,97	0,980	
	TR 45x8	MG458R	CFB TR 45x8 Dx	85	60	80	10	12	36,5	M6	8	41,00	41,50	1,270	
	* TR 46x8	MG468R	CFB TR 46x8 Dx	85	60	80	10	12	36,5	M6	8	42,00	42,53	1,220	
TR 50x8	MG508R	CFB TR 50x8 Dx	90	65	80	10	12	39	M6	8	46,00	46,53	1,400		
TR 55x9	MG559R	CFB TR 55x9 Dx	100	70	95	10,6	15	42,5	M8	6	50,50	51,06	1,890		
TR 60x9	MG609R	CFB TR 60x9 Dx	105	75	95	10,6	15	45	M8	6	55,50	56,06	2,020		
TR 70x10	MG7010R	CFB TR 70x10 Dx	120	90	120	12	18	52,5	M8	8	65,00	65,56	3,820		
TR 80x10	MG8010R	CFB TR 80x10 Dx	130	100	120	12	18	57,5	M8	8	75,00	75,56	4,230		
LEFT THREAD (7H)	* TR 10x2 Sx	MG102L	CFB TR 10x2 Sx	32	16	20	10	8	12	M4	3	9,00	9,25	0,062	
	TR 10x3 Sx	MG103L	CFB TR 10x3 Sx	32	16	20	6,7	8	12	M4	3	8,50	8,78	0,062	
	TR 12x3 Sx	MG123L	CFB TR 12x3 Sx	35	18	22	7,3	8	13	M4	4	10,50	10,80	0,072	
	* TR 14x3 Sx	MG143L	CFB TR 14x3 Sx	40	20	25	8,3	10	15	M5	4	12,50	12,80	0,110	
	TR 14x4 Sx	MG144L	CFB TR 14x4 Sx	40	20	25	6,3	10	15	M5	4	12,00	12,35	0,110	
	TR 16x4 Sx	MG164L	CFB TR 16x4 Sx	42	22	30	7,5	10	16	M5	4	14,00	14,35	0,130	
	TR 18x4 Sx	MG184L	CFB TR 18x4 Sx	45	25	35	8,7	10	17,5	M5	4	16,00	16,35	0,165	
	TR 20x4 Sx	MG204L	CFB TR 20x4 Sx	50	30	40	10	10	20	M5	5	18,00	18,35	0,245	
	* TR 22x5 Sx	MG225L	CFB TR 22x5 Sx	50	30	40	8	10	20	M5	5	19,50	19,87	0,225	
	* TR 24x5 Sx	MG245L	CFB TR 24x5 Sx	60	35	45	9	12	24	M6	5	21,50	21,90	0,400	
	TR 25x5 Sx	MG255L	CFB TR 25x5 Sx	60	35	45	9	12	24	M6	5	22,50	22,90	0,385	
	* TR 26x5 Sx	MG265L	CFB TR 26x5 Sx	60	35	45	9	12	24	M6	5	23,50	23,90	0,370	
	* TR 28x5 Sx	MG285L	CFB TR 28x5 Sx	65	40	50	10	12	26,5	M6	5	25,50	25,90	0,500	
	TR 30x6 Sx	MG306L	CFB TR 30x6 Sx	65	40	50	8,3	12	26,5	M6	5	27,00	27,45	0,480	
	* TR 32x6 Sx	MG326L	CFB TR 32x6 Sx	65	40	50	8,3	12	26,5	M6	5	29,00	29,45	0,460	
	TR 35x6 Sx	MG356L	CFB TR 35x6 Sx	75	50	60	10	12	31,5	M6	6	32,00	32,45	0,830	
	TR 36x6 Sx	MG366L	CFB TR 36x6 Sx	75	50	60	10	12	31,5	M6	6	33,00	33,45	0,800	
	TR 40x7 Sx	MG407L	CFB TR 40x7 Sx	80	55	65	9,3	12	34	M6	6	36,50	36,97	0,980	
	TR 45x8 Sx	MG458L	CFB TR 45x8 Sx	85	60	80	10	12	36,5	M6	8	41,00	41,50	1,270	
	* TR 46x8 Sx	MG468L	CFB TR 46x8 Sx	85	60	80	10	12	36,5	M6	8	42,00	42,53	1,220	
TR 50x8 Sx	MG508L	CFB TR 50x8 Sx	90	65	80	10	12	39	M6	8	46,00	46,53	1,400		
TR 55x9 Sx	MG559L	CFB TR 55x9 Sx	100	70	95	10,6	15	42,5	M8	6	50,50	51,06	1,890		
TR 60x9 Sx	MG609L	CFB TR 60x9 Sx	105	75	95	10,6	15	45	M8	6	55,50	56,06	2,020		
TR 70x10 Sx	MG7010L	CFB TR 70x10 Sx	120	90	120	12	18	52,5	M8	8	65,00	65,56	3,820		
TR 80x10 Sx	MG8010L	CFB TR 80x10 Sx	130	100	120	12	18	57,5	M8	8	75,00	75,56	4,230		

• **WARNING: WITHOUT SPECIFYING "R" or "L" AT THE END OF THE CODE AND "Dx" or "Sx" AT THE END OF THE ARTICLE THE NUT IS ALWAYS CONSIDERED TO BE RIGHT THREAD.**

* The items marked with an asterisk are less used, we suggest contacting our offices to check availability.

> **ON REQUEST:** Bronze flange nuts TR90x12 and TR100x12 with dimensions to be defined with the client considering the merits of every single application.

> **ON REQUEST:** Bronze flange nuts TR65x10 and TR75x10.

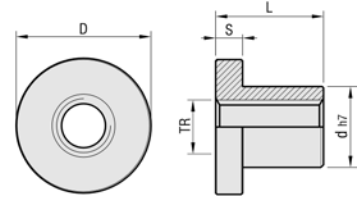
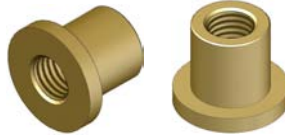
> **ON REQUEST:** Bronze flange nuts with pitch, external dimensions and fixing holes different to those listed above.

Photos, diagrams and technical data are the exclusive property of *Bimeccanica srl*, All rights reserved.

NUTS/LEAD NUTS



art.CFB/SF "NORMAL SERIES" BRONZE FLANGE NUTS WITHOUT FIXING HOLES TR10/80 in Bronze CuSn12 UNI



	TRAPEZOIDAL THREAD 7H	CODE	ARTICLE	$D_{+0,2}^0$	d_{h7}	L	NUMBER OF THREADS	S	Dm min. Ø MEDIO mm	Dm max Ø MEDIO mm	WEIGHT Kg	TURNS & LOADS max
RIGHT THREAD (7H)	* TR 10x2	MG102RSF	CFB TR 10x2 Dx S.F.	32	16	20	10	8	9,00	9,25	0,068	SEE GENERAL PRODUCT GUIDE AND BASIC THEORETICAL TABLE ON PAGES 14-17
	TR 10x3	MG103RSF	CFB TR 10x3 Dx S.F.	32	16	20	6,7	8	8,50	8,78	0,068	
	TR 12x3	MG123RSF	CFB TR 12x3 Dx S.F.	35	18	22	7,3	8	10,50	10,80	0,082	
	* TR 14x3	MG143RSF	CFB TR 14x3 Dx S.F.	40	20	25	8,3	10	12,50	12,80	0,125	
	TR 14x4	MG144RSF	CFB TR 14x4 Dx S.F.	40	20	25	6,3	10	12,00	12,35	0,125	
	TR 16x4	MG164RSF	CFB TR 16x4 Dx S.F.	42	22	30	7,5	10	14,00	14,35	0,148	
	TR 18x4	MG184RSF	CFB TR 18x4 Dx S.F.	45	25	35	8,7	10	16,00	16,35	0,182	
	TR 20x4	MG204RSF	CFB TR 20x4 Dx S.F.	50	30	40	10	10	18,00	18,35	0,265	
	* TR 22x5	MG225RSF	CFB TR 22x5 Dx S.F.	50	30	40	8	10	19,50	19,87	0,245	
	* TR 24x5	MG245RSF	CFB TR 24x5 Dx S.F.	60	35	45	9	12	21,50	21,90	0,435	
	TR 25x5	MG255RSF	CFB TR 25x5 Dx S.F.	60	35	45	9	12	22,50	22,90	0,420	
	* TR 26x5	MG265RSF	CFB TR 26x5 Dx S.F.	60	35	45	9	12	23,50	23,90	0,405	
	* TR 28x5	MG285RSF	CFB TR 28x5 Dx S.F.	65	40	50	10	12	25,50	25,90	0,530	
	TR 30x6	MG306RSF	CFB TR 30x6 Dx S.F.	65	40	50	8,3	12	27,00	27,45	0,510	
	* TR 32x6	MG326RSF	CFB TR 32x6 Dx S.F.	65	40	50	8,3	12	29,00	29,45	0,490	
	TR 35x6	MG356RSF	CFB TR 35x6 Dx S.F.	75	50	60	10	12	32,00	32,45	0,850	
	TR 36x6	MG366RSF	CFB TR 36x6 Dx S.F.	75	50	60	10	12	33,00	33,45	0,835	
	TR 40x7	MG407RSF	CFB TR 40x7 Dx S.F.	80	55	65	9,3	12	36,50	36,97	1,000	
	TR 45x8	MG458RSF	CFB TR 45x8 Dx S.F.	85	60	80	10	12	41,00	41,50	1,310	
	* TR 46x8	MG468RSF	CFB TR 46x8 Dx S.F.	85	60	80	10	12	42,00	42,53	1,300	
TR 50x8	MG508RSF	CFB TR 50x8 Dx S.F.	90	65	80	10	12	46,00	46,53	1,460		
TR 55x9	MG559RSF	CFB TR 55x9 Dx S.F.	100	70	95	10,6	15	50,50	51,06	2,010		
TR 60x9	MG609RSF	CFB TR 60x9 Dx S.F.	105	75	95	10,6	15	55,50	56,06	2,180		
TR 70x10	MG7010RSF	CFB TR 70x10 Dx S.F.	120	90	120	12	18	65,00	65,56	3,780		
TR 80x10	MG8010RSF	CFB TR 80x10 Dx S.F.	130	100	120	12	18	75,00	75,56	4,380		
LEFT THREAD (7H)	* TR 10x2 Sx	MG102LSF	CFB TR 10x2 Sx S.F.	32	16	20	10	8	9,00	9,25	0,068	
	TR 10x3 Sx	MG103LSF	CFB TR 10x3 Sx S.F.	32	16	20	6,7	8	8,50	8,78	0,068	
	TR 12x3 Sx	MG123LSF	CFB TR 12x3 Sx S.F.	35	18	22	7,3	8	10,50	10,80	0,082	
	* TR 14x3 Sx	MG143LSF	CFB TR 14x3 Sx S.F.	40	20	25	8,3	10	12,50	12,80	0,125	
	TR 14x4 Sx	MG144LSF	CFB TR 14x4 Sx S.F.	40	20	25	6,3	10	12,00	12,35	0,125	
	TR 16x4 Sx	MG164LSF	CFB TR 16x4 Sx S.F.	42	22	30	7,5	10	14,00	14,35	0,148	
	TR 18x4 Sx	MG184LSF	CFB TR 18x4 Sx S.F.	45	25	35	8,7	10	16,00	16,35	0,182	
	TR 20x4 Sx	MG204LSF	CFB TR 20x4 Sx S.F.	50	30	40	10	10	18,00	18,35	0,265	
	* TR 22x5 Sx	MG225LSF	CFB TR 22x5 Sx S.F.	50	30	40	8	10	19,50	19,87	0,245	
	* TR 24x5 Sx	MG245LSF	CFB TR 24x5 Sx S.F.	60	35	45	9	12	21,50	21,90	0,435	
	TR 25x5 Sx	MG255LSF	CFB TR 25x5 Sx S.F.	60	35	45	9	12	22,50	22,90	0,420	
	* TR 26x5 Sx	MG265LSF	CFB TR 26x5 Sx S.F.	60	35	45	9	12	23,50	23,90	0,405	
	* TR 28x5 Sx	MG285LSF	CFB TR 28x5 Sx S.F.	65	40	50	10	12	25,50	25,90	0,530	
	TR 30x6 Sx	MG306LSF	CFB TR 30x6 Sx S.F.	65	40	50	8,3	12	27,00	27,45	0,510	
	* TR 32x6 Sx	MG326LSF	CFB TR 32x6 Sx S.F.	65	40	50	8,3	12	29,00	29,45	0,490	
	TR 35x6 Sx	MG356LSF	CFB TR 35x6 Sx S.F.	75	50	60	10	12	32,00	32,45	0,850	
	TR 36x6 Sx	MG366LSF	CFB TR 36x6 Sx S.F.	75	50	60	10	12	33,00	33,45	0,835	
	TR 40x7 Sx	MG407LSF	CFB TR 40x7 Sx S.F.	80	55	65	9,3	12	36,50	36,97	1,000	
	TR 45x8 Sx	MG458LSF	CFB TR 45x8 Sx S.F.	85	60	80	10	12	41,00	41,50	1,310	
	* TR 46x8 Sx	MG468LSF	CFB TR 46x8 Sx S.F.	85	60	80	10	12	42,00	42,53	1,300	
TR 50x8 Sx	MG508LSF	CFB TR 50x8 Sx S.F.	90	65	80	10	12	46,00	46,53	1,460		
TR 55x9 Sx	MG559LSF	CFB TR 55x9 Sx S.F.	100	70	95	10,6	15	50,50	51,06	2,010		
TR 60x9 Sx	MG609LSF	CFB TR 60x9 Sx S.F.	105	75	95	10,6	15	55,50	56,06	2,180		
TR 70x10 Sx	MG7010LSF	CFB TR 70x10 Sx S.F.	120	90	120	12	18	65,00	65,56	3,780		
TR 80x10 Sx	MG8010LSF	CFB TR 80x10 Sx S.F.	130	100	120	12	18	75,00	75,56	4,380		

• **WARNING: WITHOUT SPECIFYING "R" or "L" AT THE END OF THE CODE AND "Dx" or "Sx" AT THE END OF THE ARTICLE THE NUT IS ALWAYS CONSIDERED TO BE RIGHT THREAD.**

* The items marked with an asterisk are less used, we suggest contacting our offices to check availability.

> **ON REQUEST:** Bronze flange nuts TR90x12 and TR100x12 with dimensions to be defined with the client considering the merits of every single application.

> **ON REQUEST:** Bronze flange nuts TR65x10 and TR75x10.

> **ON REQUEST:** Bronze flange nuts with pitch, and external dimensions different to those listed above.

Photos, diagrams and technical data are the exclusive property of *Bimeccanica s.r.l.*, All rights reserved.