

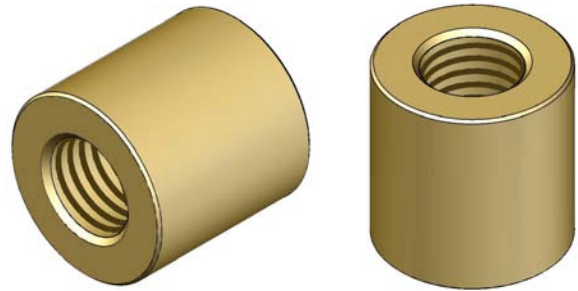
art.CCB

BRONZE CYLINDRICAL NUTS TR10/80 in Bronze CuSn12 UNI 7013-72 - R300 N/mm², (HB 90/100)

Material characteristics: ideal for medium velocity movements, heavy loads, use with lubrication.

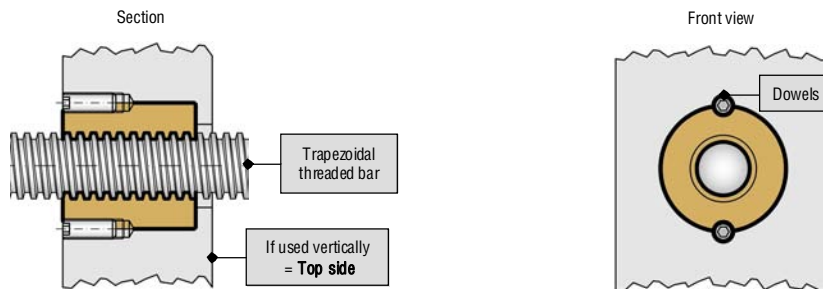
The bronze cylindrical nuts are produced by us from either continuous casting bars or from die-cast alloy bars Cu.Sn.12 UNI 7013-72 certified.

This material has a low friction coefficient when sliding on the screw, good wear resistance and low aggressiveness towards the screw with efficient self lubrication from the tin element (a component determining the quality of this alloy). Lubrication, however, is essential for achieving maximum performance and for this we recommend looking at the lubricants in our *Technical Catalogue GDM* (www.bimeccanica.it). This type of nut is usable for medium/high speeds with heavy loads and with excellent results for smooth sliding to give perfect mechanical transmission (see pages 14-17 for maximum load and speed details).



• **HORIZONTAL AND VERTICAL APPLICATION:**

FITTING IN CYLINDRICAL SEAT USING DOWELS



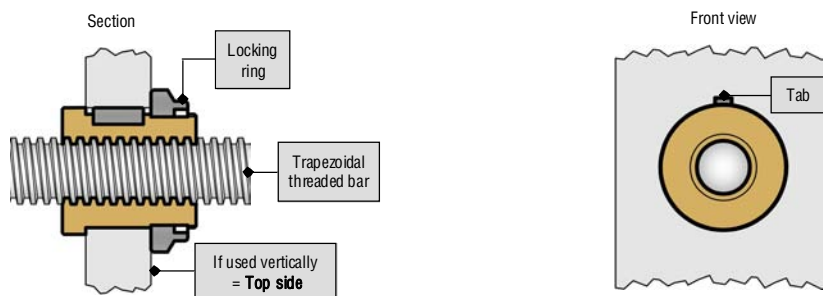
To use the cylindrical nuts a hole has to be made in the base support to **K6 tolerance (or H7)** keying the nut and securing it with dowels as shown in the diagram below. To choose the dowel diameter we recommend the following formula which has an accuracy of +/- 10%:

External diameter of nut “d” less thread diameter “TR” divided by 2:
$$\frac{d - \text{TR}}{2} = M \dots\dots\dots \text{Diameter of dowels}$$

When replacing the nut the new nut should be keyed and fitted in a new position being shifted by about 45° or 90° from the original position. By mounting the dowels of the said dimensions the nut is able to support the load in both directions (push and pull).

For heavy loads we recommend using 4 dowels and if the movement is for lifting it would be appropriate to mount the nut as shown in the diagram.

FITTING IN CYLINDRICAL SEAT BY MEANS OF TAB AND LOCKING RING



For lubricating we suggest a transversal hole on the support/threaded nut to take a grease nipple or a tube.

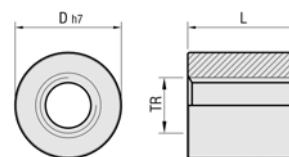
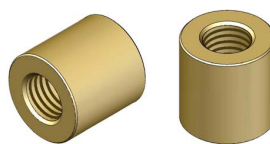
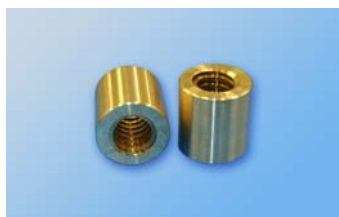
For the CCB nut with hole and lubrication channel see spares for the Compact Steel transmission groups in Technical Catalogue GDM (www.bimeccanica.it)

BEFORE DECIDING ON THE TYPE OF NUT TO USE, SEE DRIVE TRANSMISSION GROUPS = TECHNICAL CATALOGUE GDM (www.bimeccanica.it)

NUTS/LEAD NUTS



art.CCB BRONZE CYLINDRICAL NUTS TR10/80 in Bronze CuSn12 UNI 7013-72 R300 N/mm², (HB 90/100)



Available with lateral slots, channel and lubrication hole **art.CCB/A** see Compact Steel spares **Technical Catalogue GDM**

	TRAPEZOIDAL THREAD	CODE	ARTICLE	D h7	L	NUMBER OF THREADS	Dm min. Ø MEDIO mm	Dm max. Ø MEDIO mm	WEIGHT Kg	TURNS & LOADS max
RIGHT THREAD (7H)	* TR 10x2	ME102R	CCB TR 10x2 Dx	20	20	10	9,00	9,25	0,050	SEE GENERAL PRODUCT GUIDE AND BASIC THEORETICAL TABLE ON PAGES 14-17
	TR 10x3	ME103R	CCB TR 10x3 Dx	20	20	6,7	8,50	8,78	0,050	
	TR 12x3	ME123R	CCB TR 12x3 Dx	24	25	8,3	10,50	10,80	0,080	
	* TR 14x3	ME143R	CCB TR 14x3 Dx	24	25	8,3	12,50	12,80	0,075	
	TR 14x4	ME144R	CCB TR 14x4 Dx	24	25	6,3	12,00	12,35	0,075	
	TR 16x4	ME164R	CCB TR 16x4 Dx	28	30	7,5	14,00	14,35	0,120	
	TR 18x4	ME184R	CCB TR 18x4 Dx	34	35	8,7	16,00	16,35	0,220	
	TR 20x4	ME204R	CCB TR 20x4 Dx	38	40	10	18,00	18,35	0,310	
	* TR 22x5	ME225R	CCB TR 22x5 Dx	38	40	8	19,50	19,87	0,290	
	* TR 24x5	ME245R	CCB TR 24x5 Dx	44	45	9	21,50	21,90	0,455	
	TR 25x5	ME255R	CCB TR 25x5 Dx	44	45	9	22,50	22,90	0,440	
	* TR 26x5	ME265R	CCB TR 26x5 Dx	44	45	9	23,50	23,90	0,420	
	* TR 28x5	ME285R	CCB TR 28x5 Dx	48	50	10	25,50	25,90	0,570	
	TR 30x6	ME306R	CCB TR 30x6 Dx	48	50	8,3	27,00	27,45	0,540	
	* TR 32x6	ME326R	CCB TR 32x6 Dx	48	50	8,3	29,00	29,45	0,490	
	TR 35x6	ME356R	CCB TR 35x6 Dx	58	60	10	32,00	32,45	0,960	
	TR 36x6	ME366R	CCB TR 36x6 Dx	58	60	10	33,00	33,45	0,930	
	TR 40x7	ME407R	CCB TR 40x7 Dx	64	65	9,3	36,50	36,97	1,220	
	TR 45x8	ME458R	CCB TR 45x8 Dx	68	80	10	41,00	41,50	1,620	
	* TR 46x8	ME468R	CCB TR 46x8 Dx	68	80	10	42,00	42,53	1,550	
TR 50x8	ME508R	CCB TR 50x8 Dx	74	80	10	46,00	46,53	1,790		
TR 55x9	ME559R	CCB TR 55x9 Dx	78	95	10,6	50,50	51,06	2,270		
TR 60x9	ME609R	CCB TR 60x9 Dx	84	95	10,6	55,50	56,06	2,530		
TR 70x10	ME7010R	CCB TR 70x10 Dx	98	120	12	65,00	65,56	4,410		
TR 80x10	ME8010R	CCB TR 80x10 Dx	108	120	12	75,00	75,56	4,910		
LEFT THREAD (7H)	* TR 10x2 Sx	ME102L	CCB TR 10x2 Sx	20	20	10	9,00	9,25	0,050	
	TR 10x3 Sx	ME103L	CCB TR 10x3 Sx	20	20	6,7	8,50	8,78	0,050	
	TR 12x3 Sx	ME123L	CCB TR 12x3 Sx	24	25	8,3	10,50	10,80	0,080	
	* TR 14x3 Sx	ME143L	CCB TR 14x3 Sx	24	25	8,3	12,50	12,80	0,075	
	TR 14x4 Sx	ME144L	CCB TR 14x4 Sx	24	25	6,3	12,00	12,35	0,075	
	TR 16x4 Sx	ME164L	CCB TR 16x4 Sx	28	30	7,5	14,00	14,35	0,120	
	TR 18x4 Sx	ME184L	CCB TR 18x4 Sx	34	35	8,7	16,00	16,35	0,220	
	TR 20x4 Sx	ME204L	CCB TR 20x4 Sx	38	40	10	18,00	18,35	0,310	
	* TR 22x5 Sx	ME225L	CCB TR 22x5 Sx	38	40	8	19,50	19,87	0,290	
	* TR 24x5 Sx	ME245L	CCB TR 24x5 Sx	44	45	9	21,50	21,90	0,455	
	TR 25x5 Sx	ME255L	CCB TR 25x5 Sx	44	45	9	22,50	22,90	0,440	
	* TR 26x5 Sx	ME265L	CCB TR 26x5 Sx	44	45	9	23,50	23,90	0,420	
	* TR 28x5 Sx	ME285L	CCB TR 28x5 Sx	48	50	10	25,50	25,90	0,570	
	TR 30x6 Sx	ME306L	CCB TR 30x6 Sx	48	50	8,3	27,00	27,45	0,540	
	* TR 32x6 Sx	ME326L	CCB TR 32x6 Sx	48	50	8,3	29,00	29,45	0,490	
	TR 35x6 Sx	ME356L	CCB TR 35x6 Sx	58	60	10	32,00	32,45	0,960	
	TR 36x6 Sx	ME366L	CCB TR 36x6 Sx	58	60	10	33,00	33,45	0,930	
	TR 40x7 Sx	ME407L	CCB TR 40x7 Sx	64	65	9,3	36,50	36,97	1,220	
	TR 45x8 Sx	ME458L	CCB TR 45x8 Sx	68	80	10	41,00	41,50	1,620	
	* TR 46x8 Sx	ME468L	CCB TR 46x8 Sx	68	80	10	42,00	42,53	1,550	
TR 50x8 Sx	ME508L	CCB TR 50x8 Sx	74	80	10	46,00	46,53	1,790		
TR 55x9 Sx	ME559L	CCB TR 55x9 Sx	78	95	10,6	50,50	51,06	2,270		
TR 60x9 Sx	ME609L	CCB TR 60x9 Sx	84	95	10,6	55,50	56,06	2,530		
TR 70x10 Sx	ME7010L	CCB TR 70x10 Sx	98	120	12	65,00	65,56	4,410		
TR 80x10 Sx	ME8010L	CCB TR 80x10 Sx	108	120	12	75,00	75,56	4,910		

• **WARNING: WITHOUT SPECIFYING "R" or "L" AT THE END OF THE CODE AND "Dx" or "Sx" AT THE END OF THE ARTICLE THE NUT IS ALWAYS CONSIDERED TO BE RIGHT THREAD.**

* The items marked with an asterisk are less used, we suggest contacting our offices to check availability.

> **ON REQUEST:** Bronze cylindrical nuts TR90x12 and TR100x12 with dimensions to be defined with the client considering the merits of every single application.

> **ON REQUEST:** Bronze cylindrical nuts TR65x10 and TR75x10.

> **ON REQUEST:** Bronze cylindrical nuts with pitch, and external dimensions different to those listed above.

Photos, diagrams and technical data are the exclusive property of *Bimeccanica s.r.l.*, All rights reserved.