

**art.CQA**

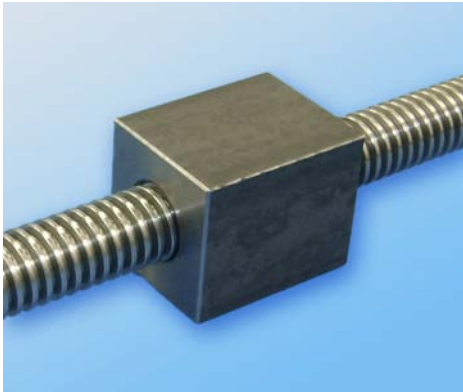
**STEEL SQUARE NUTS TR10/60** in 11SMnPb37 W.NR:1.0737 - R 500 N/mm<sup>2</sup>, (HB 120/200)

**Material characteristics:** The steel square nuts are made by us from drawn bars h11 in certified R50 steel.

A much cheaper item than the similar brass square nut but with a more specific use. Usable for manual positioning movements but requiring good lubrication as the steel does not have the anti-friction properties. The lubrication is a determining factor in achieving the best efficiency of this flange nut and hence we recommend viewing the lubricants in our *Technical Catalogue GDM* ([www.bimeccanica.it](http://www.bimeccanica.it)).

As per the similar square nuts in brass and nylon they can also be fixed by bolts by means of personalised holes (see preceding pages) and also, **as illustrated in the images below the CQA can also be welded in vertical position on the side of a base, for the positioning of medium/light loads and for heavy loads by the addition of a Safety Support.** The Safety Support is not necessary whenever the welding comes with the load supported above the nut instead of on the vertical side (see examples below and on the following pages).

• **CQA Steel square nut - Examples of fitting in respect of the type of load to support:**

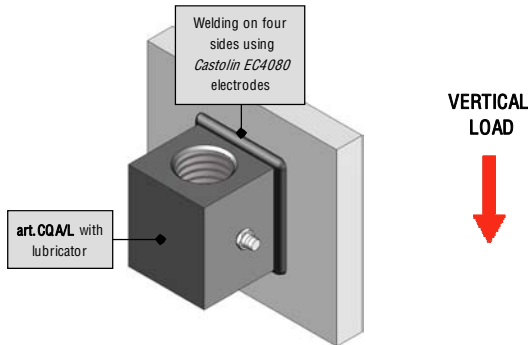


CQA nut welded with Safety Support TDS to the bearing structure for heavy loads



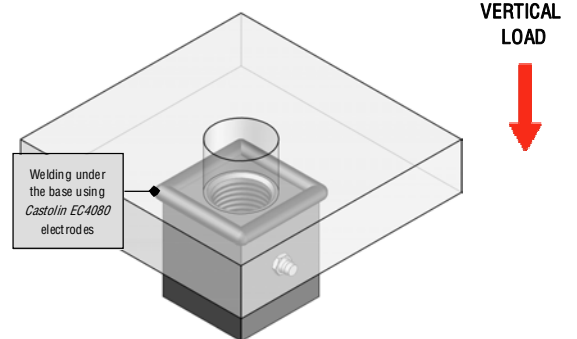
**MEDIUM/LIGHT LOADS**

With CQA/L TR10/60 nut cantilever welded on four sides (without support), application allowed in cases in which there are no risks of injury should the welding around the nut break:



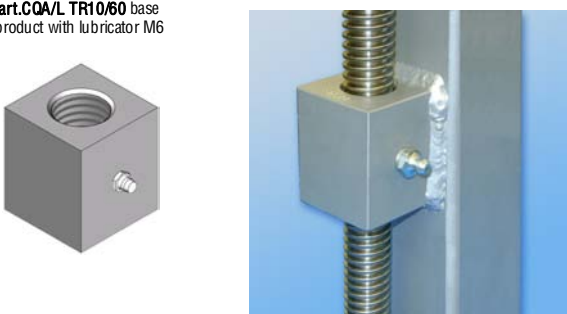
**HEAVY LOADS**

With CQA/L TR10/60 nut welded under the base with screw passing through:



art.CQA/L TR10/60 base product with lubricator M6

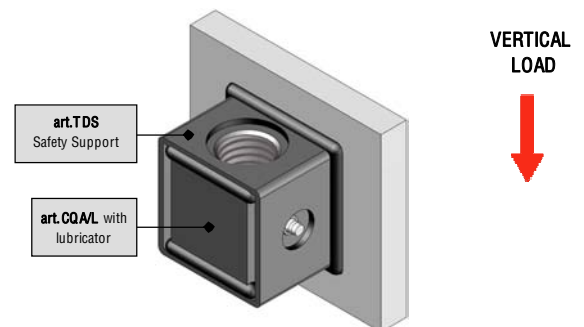
CQA nut welded to the bearing structure for medium/light loads



**HEAVY LOADS**

With CQA/L TR20/60 nut cantilever welded and reinforced with "TDS" Safety Support (see following pages)

"TDS" added for cantilever welding in safety.

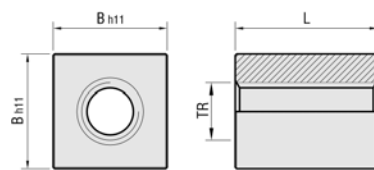
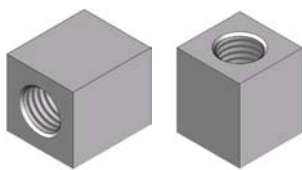
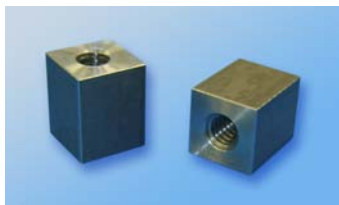


For more of these applications see the following pages whilst for Safety Supports or the Stabilisers see *Technical Catalogue SLV* ([www.bimeccanica.it](http://www.bimeccanica.it)).

## NUTS/LEAD NUTS



**art.CQA** **STEEL SQUARE NUTS TR10/60** in 11SMnPb37 W.NR:1.0737 - R 500 N/mm<sup>2</sup>, (HB 120/200)



	TRAPEZOIDAL THREAD 7H	CODE	ARTICLE	B h11	L	NUMBER OF THREADS	Dm min. Ø AVERAGE mm	Dm max Ø AVERAGE mm	WEIGHT Kg	TURNS & LOADS max
<b>RIGHT THREAD (7H)</b>	* TR 10x2	MB102R	CQA TR 10x2 Dx	□ 25	30	15	9,00	9,25	0,130	<b>SEE GENERAL PRODUCT GUIDE WITH BASIC THEORETICAL TABLE WITH REFERENCE TO BRONZE PAGES. 14-17 (STATIC LOAD SUPERIOR TO BRONZE - DYNAMIC LOAD &amp; SPEED INFERIOR TO BRONZE)</b>
	TR 10x3	MB103R	CQA TR 10x3 Dx	□ 25	30	10	8,50	8,78	0,130	
	TR 12x3	MB123R	CQA TR 12x3 Dx	□ 25	30	10	10,50	10,80	0,125	
	* TR 14x3	MB143R	CQA TR 14x3 Dx	□ 30	35	11,7	12,50	12,80	0,210	
	TR 14x4	MB144R	CQA TR 14x4 Dx	□ 30	35	8,8	12,00	12,35	0,210	
	TR 16x4	MB164R	CQA TR 16x4 Dx	□ 30	35	8,8	14,00	14,35	0,200	
	TR 18x4	MB184R	CQA TR 18x4 Dx	□ 35	45	11,3	16,00	16,35	0,350	
	TR 20x4	MB204R	CQA TR 20x4 Dx	□ 40	50	12,5	18,00	18,35	0,515	
	* TR 22x5	MB225R	CQA TR 22x5 Dx	□ 40	50	10	19,50	19,87	0,495	
	* TR 24x5	MB245R	CQA TR 24x5 Dx	□ 45	55	11	21,50	21,90	0,700	
	TR 25x5	MB255R	CQA TR 25x5 Dx	□ 45	55	11	22,50	22,90	0,685	
	* TR 26x5	MB265R	CQA TR 26x5 Dx	□ 45	55	11	23,50	23,90	0,670	
	* TR 28x5	MB285R	CQA TR 28x5 Dx	□ 50	60	12	25,50	25,90	0,920	
	TR 30x6	MB306R	CQA TR 30x6 Dx	□ 50	60	10	27,00	27,45	0,880	
	* TR 32x6	MB326R	CQA TR 32x6 Dx	□ 50	60	10	29,00	29,45	0,840	
	TR 35x6	MB356R	CQA TR 35x6 Dx	□ 60	70	11,7	32,00	32,45	1,500	
	TR 36x6	MB366R	CQA TR 36x6 Dx	□ 60	70	11,7	33,00	33,45	1,460	
	TR 40x7	MB407R	CQA TR 40x7 Dx	□ 60	70	10	36,50	36,97	1,350	
	TR 45x8	MB458R	CQA TR 45x8 Dx	□ 65	80	10	41,00	41,50	1,760	
	TR 50x8	MB508R	CQA TR 50x8 Dx	□ 75	90	11,3	46,00	46,53	2,730	
TR 55x9	MB559R	CQA TR 55x9 Dx	□ 85	100	11,1	50,50	51,06	3,990		
TR 60x9	MB609R	CQA TR 60x9 Dx	□ 85	100	11,1	55,50	56,06	3,670		
<b>LEFT THREAD (7H)</b>	* TR 10x2 Sx	MB102L	CQA TR 10x2 Sx	□ 25	30	15	9,00	9,25	0,130	
	TR 10x3 Sx	MB103L	CQA TR 10x3 Sx	□ 25	30	10	8,50	8,78	0,130	
	TR 12x3 Sx	MB123L	CQA TR 12x3 Sx	□ 25	30	10	10,50	10,80	0,125	
	* TR 14x3 Sx	MB143L	CQA TR 14x3 Sx	□ 30	35	11,7	12,50	12,80	0,210	
	TR 14x4 Sx	MB144L	CQA TR 14x4 Sx	□ 30	35	8,8	12,00	12,35	0,210	
	TR 16x4 Sx	MB164L	CQA TR 16x4 Sx	□ 30	35	8,8	14,00	14,35	0,200	
	TR 18x4 Sx	MB184L	CQA TR 18x4 Sx	□ 35	45	11,3	16,00	16,35	0,350	
	TR 20x4 Sx	MB204L	CQA TR 20x4 Sx	□ 40	50	12,5	18,00	18,35	0,515	
	* TR 22x5 Sx	MB225L	CQA TR 22x5 Sx	□ 40	50	10	19,50	19,87	0,495	
	* TR 24x5 Sx	MB245L	CQA TR 24x5 Sx	□ 45	55	11	21,50	21,90	0,700	
	TR 25x5 Sx	MB255L	CQA TR 25x5 Sx	□ 45	55	11	22,50	22,90	0,685	
	* TR 26x5 Sx	MB265L	CQA TR 26x5 Sx	□ 45	55	11	23,50	23,90	0,670	
	* TR 28x5 Sx	MB285L	CQA TR 28x5 Sx	□ 50	60	12	25,50	25,90	0,920	
	TR 30x6 Sx	MB306L	CQA TR 30x6 Sx	□ 50	60	10	27,00	27,45	0,880	
	* TR 32x6 Sx	MB326L	CQA TR 32x6 Sx	□ 50	60	10	29,00	29,45	0,840	
	TR 35x6 Sx	MB356L	CQA TR 35x6 Sx	□ 60	70	11,7	32,00	32,45	1,500	
	TR 36x6 Sx	MB366L	CQA TR 36x6 Sx	□ 60	70	11,7	33,00	33,45	1,460	
	TR 40x7 Sx	MB407L	CQA TR 40x7 Sx	□ 60	70	10	36,50	36,97	1,350	
	TR 45x8 Sx	MB458L	CQA TR 45x8 Sx	□ 65	80	10	41,00	41,50	1,760	
	TR 50x8 Sx	MB508L	CQA TR 50x8 Sx	□ 75	90	11,3	46,00	46,53	2,730	
TR 55x9 Sx	MB559L	CQA TR 55x9 Sx	□ 85	100	11,1	50,50	51,06	3,990		
TR 60x9 Sx	MB609L	CQA TR 60x9 Sx	□ 85	100	11,1	55,50	56,06	3,670		

• **WARNING: WITHOUT SPECIFYING "R" or "L" AT THE END OF THE CODE AND "Dx" or "Sx" AT THE END OF THE ARTICLE THE NUT IS ALWAYS CONSIDERED TO BE RIGHT THREAD.**

\* The items marked with an asterisk are less used, we suggest contacting our offices to check availability.

- > **ON REQUEST:** Steel square nuts **TR46x8**, with dimensions of TR45x8.
- > **ON REQUEST:** for sufficient quantities we can supply steel square nuts **TR70x10** and **TR80x10**.
- > **ON REQUEST:** Steel square nuts with **pitch, and external dimensions** different to those listed above.
- > **ON REQUEST:** Steel square nuts with **transversal or longitudinal fitting holes**.