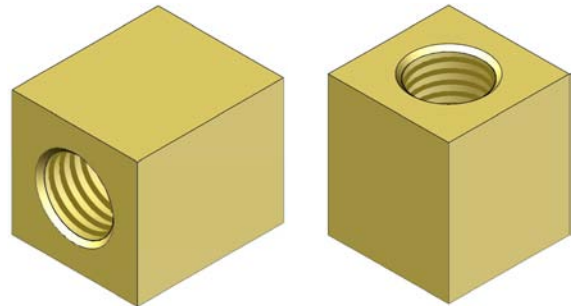
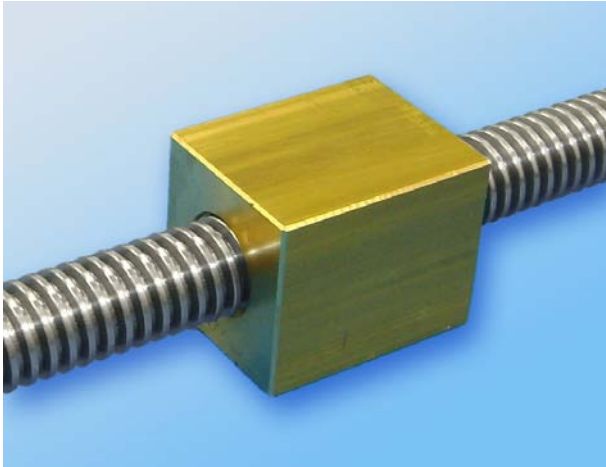


art.CQO

BRASS SQUARE NUTS TR10/60 in OT58 UNI 5705-65 - R350 N/mm², (HB 75/100)

Material characteristics: We produce our brass square nuts from extruded bars in OT58 UNI 5705-65 certificated alloy. This type of material has low coefficient of friction and good scrolling qualities at medium/high speeds, good wear resistance, and low aggressiveness towards the screw (see max speeds and loads relative to bronze on pages 14-17). Consider that the technical characteristics of brass in relation to load and speed are inferior by about 30% in respect of bronze. The lubrication is a determining factor in achieving the best efficiency of this nut and hence we recommend viewing the lubricants in our *Technical Catalogue GDM* (www.bimeccanica.it).

Given its square shape this product allows for easy application and excellent fastening options using hex cap socket bolts via through or threaded holes, with dowel centring/support and threaded hole for lubrication (if dowel holes are central then the lubrication hole is positioned off centre). The above mentioned holes are normally made personally by the user, however upon specific request *Bimeccanica* can advise on the best use of holes and, if the quantity is sufficient, can also prepare them for the client (see examples below).

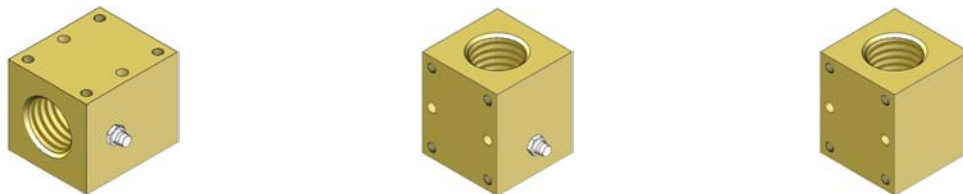


• **EXAMPLES OF ADDED HOLES:**

> **Version FP/L:** with through holes and lubricator (+ n.2 central holes per dowels or pins).



> **Version FF/L:** with threaded holes and lubricator (+ n.2 central holes per dowels or pins).



> **ON REQUEST:** with longitudinal in respect of the thread, with or without, lubricator.



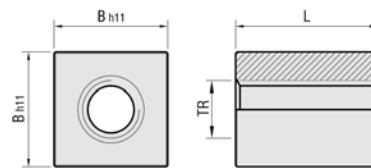
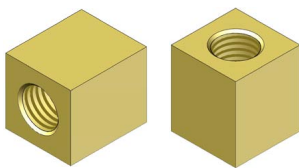
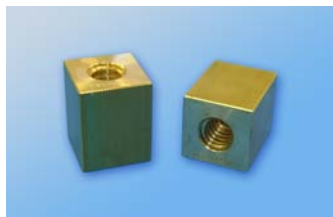
We can supply square nuts threaded ready to take the grease nipple laterally which normally, when there is no need for dowels or pins, is positioned centrally.

BEFORE DECIDING ON THE TYPE OF NUT TO USE, SEE DRIVE TRANSMISSION GROUPS = TECHNICAL CATALOGUE GDM (www.bimeccanica.it)

NUTS/LEAD NUTS



art.CQO BRASS SQUARE NUTS TR10/60 in OT58 UNI 5705-65 - R350 N/mm², (HB 75/100)



	TRAPEZOIDAL THREAD 7H	CODE	ARTICLE	B h11	L	NUMBER OF THREADS	Dm min. Ø AVERAGE mm	Dm max Ø AVERAGE mm	WEIGHT Kg	TURNS & LOADS max
RIGHT THREAD (7H)	* TR 10x2	MC102R	CQO TR 10x2 Dx	□ 25	30	15	9,00	9,25	0,145	SEE GENERAL PRODUCT GUIDE WITH BASIC THEORETICAL TABLE WITH REFERENCE TO BRONZE PAGES. 14-17 (TECHNICAL CHARACTERISTICS IN RELATION TO LOAD AND SPEED ARE ABOUT 30% INFERIOR TO BRONZE)
	TR 10x3	MC103R	CQO TR 10x3 Dx	□ 25	30	10	8,50	8,78	0,145	
	TR 12x3	MC123R	CQO TR 12x3 Dx	□ 25	30	10	10,50	10,80	0,135	
	* TR 14x3	MC143R	CQO TR 14x3 Dx	□ 30	35	11,7	12,50	12,80	0,230	
	TR 14x4	MC144R	CQO TR 14x4 Dx	□ 30	35	8,8	12,00	12,35	0,230	
	TR 16x4	MC164R	CQO TR 16x4 Dx	□ 30	35	8,8	14,00	14,35	0,220	
	TR 18x4	MC184R	CQO TR 18x4 Dx	□ 35	45	11,3	16,00	16,35	0,385	
	TR 20x4	MC204R	CQO TR 20x4 Dx	□ 40	50	12,5	18,00	18,35	0,560	
	* TR 22x5	MC225R	CQO TR 22x5 Dx	□ 40	50	10	19,50	19,87	0,540	
	* TR 24x5	MC245R	CQO TR 24x5 Dx	□ 45	55	11	21,50	21,90	0,760	
	TR 25x5	MC255R	CQO TR 25x5 Dx	□ 45	55	11	22,50	22,90	0,745	
	* TR 26x5	MC265R	CQO TR 26x5 Dx	□ 45	55	11	23,50	23,90	0,725	
	* TR 28x5	MC285R	CQO TR 28x5 Dx	□ 50	60	12	25,50	25,90	0,990	
	TR 30x6	MC306R	CQO TR 30x6 Dx	□ 50	60	10	27,00	27,45	0,950	
	* TR 32x6	MC326R	CQO TR 32x6 Dx	□ 50	60	10	29,00	29,45	0,910	
	TR 35x6	MC356R	CQO TR 35x6 Dx	□ 60	70	11,7	32,00	32,45	1,620	
	TR 36x6	MC366R	CQO TR 36x6 Dx	□ 60	70	11,7	33,00	33,45	1,600	
	TR 40x7	MC407R	CQO TR 40x7 Dx	□ 60	70	10	36,50	36,97	1,470	
	TR 45x8	MC458R	CQO TR 45x8 Dx	□ 65	80	10	41,00	41,50	1,920	
	TR 50x8	MC508R	CQO TR 50x8 Dx	□ 75	90	11,3	46,00	46,53	2,940	
TR 55x9	MC559R	CQO TR 55x9 Dx	□ 85	100	11,1	50,50	51,06	4,300		
TR 60x9	MC609R	CQO TR 60x9 Dx	□ 85	100	11,1	55,50	56,06	3,950		
LEFT THREAD (7H)	* TR 10x2 Sx	MC102L	CQO TR 10x2 Sx	□ 25	30	15	9,00	9,25	0,145	
	TR 10x3 Sx	MC103L	CQO TR 10x3 Sx	□ 25	30	10	8,50	8,78	0,145	
	TR 12x3 Sx	MC123L	CQO TR 12x3 Sx	□ 25	30	10	10,50	10,80	0,135	
	* TR 14x3 Sx	MC143L	CQO TR 14x3 Sx	□ 30	35	11,7	12,50	12,80	0,230	
	TR 14x4 Sx	MC144L	CQO TR 14x4 Sx	□ 30	35	8,8	12,00	12,35	0,230	
	TR 16x4 Sx	MC164L	CQO TR 16x4 Sx	□ 30	35	8,8	14,00	14,35	0,220	
	TR 18x4 Sx	MC184L	CQO TR 18x4 Sx	□ 35	45	11,3	16,00	16,35	0,385	
	TR 20x4 Sx	MC204L	CQO TR 20x4 Sx	□ 40	50	12,5	18,00	18,35	0,560	
	* TR 22x5 Sx	MC225L	CQO TR 22x5 Sx	□ 40	50	10	19,50	19,87	0,540	
	* TR 24x5 Sx	MC245L	CQO TR 24x5 Sx	□ 45	55	11	21,50	21,90	0,760	
	TR 25x5 Sx	MC255L	CQO TR 25x5 Sx	□ 45	55	11	22,50	22,90	0,745	
	* TR 26x5 Sx	MC265L	CQO TR 26x5 Sx	□ 45	55	11	23,50	23,90	0,725	
	* TR 28x5 Sx	MC285L	CQO TR 28x5 Sx	□ 50	60	12	25,50	25,90	0,990	
	TR 30x6 Sx	MC306L	CQO TR 30x6 Sx	□ 50	60	10	27,00	27,45	0,950	
	* TR 32x6 Sx	MC326L	CQO TR 32x6 Sx	□ 50	60	10	29,00	29,45	0,910	
	TR 35x6 Sx	MC356L	CQO TR 35x6 Sx	□ 60	70	11,7	32,00	32,45	1,620	
	TR 36x6 Sx	MC366L	CQO TR 36x6 Sx	□ 60	70	11,7	33,00	33,45	1,600	
	TR 40x7 Sx	MC407L	CQO TR 40x7 Sx	□ 60	70	10	36,50	36,97	1,470	
	TR 45x8 Sx	MC458L	CQO TR 45x8 Sx	□ 65	80	10	41,00	41,50	1,920	
	TR 50x8 Sx	MC508L	CQO TR 50x8 Sx	□ 75	90	11,3	46,00	46,53	2,940	
TR 55x9 Sx	MC559L	CQO TR 55x9 Sx	□ 85	100	11,1	50,50	51,06	4,300		
TR 60x9 Sx	MC609L	CQO TR 60x9 Sx	□ 85	100	11,1	55,50	56,06	3,950		

• **WARNING: WITHOUT SPECIFYING "R" or "L" AT THE END OF THE CODE AND "Dx" or "Sx" AT THE END OF THE ARTICLE THE NUT IS ALWAYS CONSIDERED TO BE RIGHT THREAD.**

* The items marked with an asterisk are less used, we suggest contacting our offices to check availability.

- > **ON REQUEST:** Brass square nuts TR46x8, dimensions like the TR45x8.
- > **ON REQUEST:** Brass square nuts with pitch, and external dimensions different to those listed above.
- > **ON REQUEST:** Brass square nuts with transversal or longitudinal fitting holes.