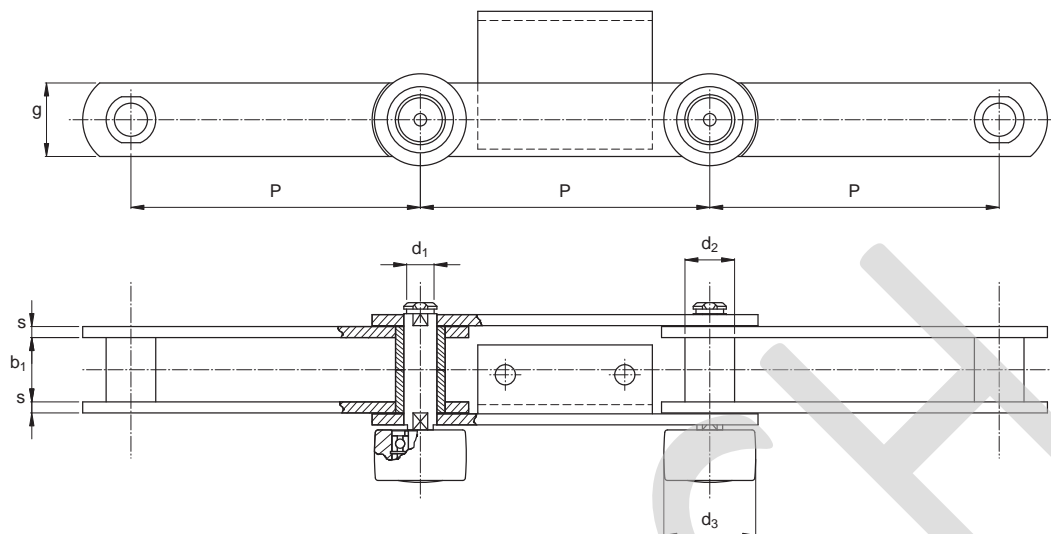


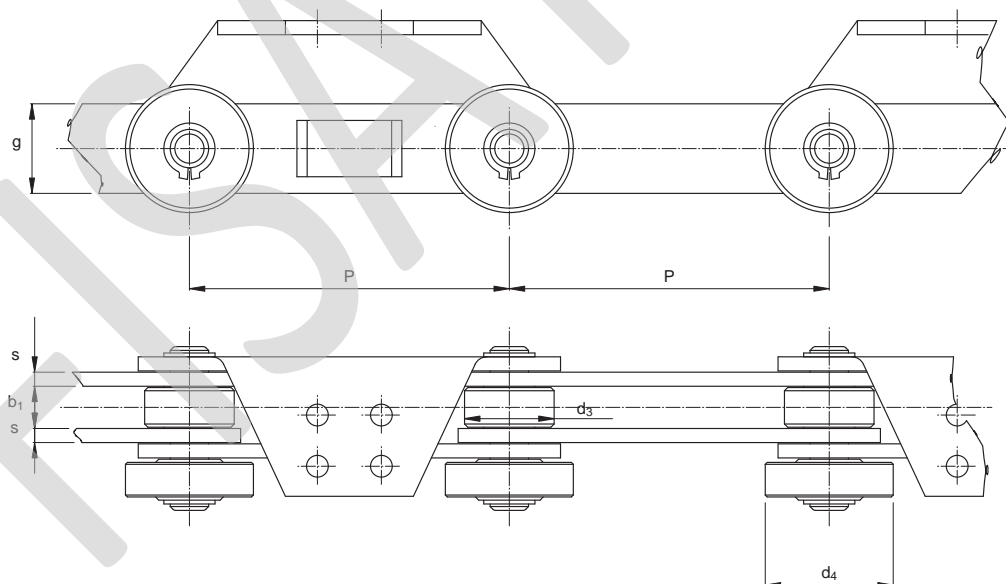
Scraper chain with lateral wheels

Bush chain with attachments every 2 pitches and side wheels. Wheels with greased bearings, with high efficiency and duration.



Code	Pitch P	Dimensions mm						MBF kN
		b_1	\emptyset Pin d_1	\emptyset Bush d_2	\emptyset Side roller d_3	g	s	
RLH	315	70	35.65	50	100	80	12	480

Roller chain with attachments every 2 pitches and lateral wheels

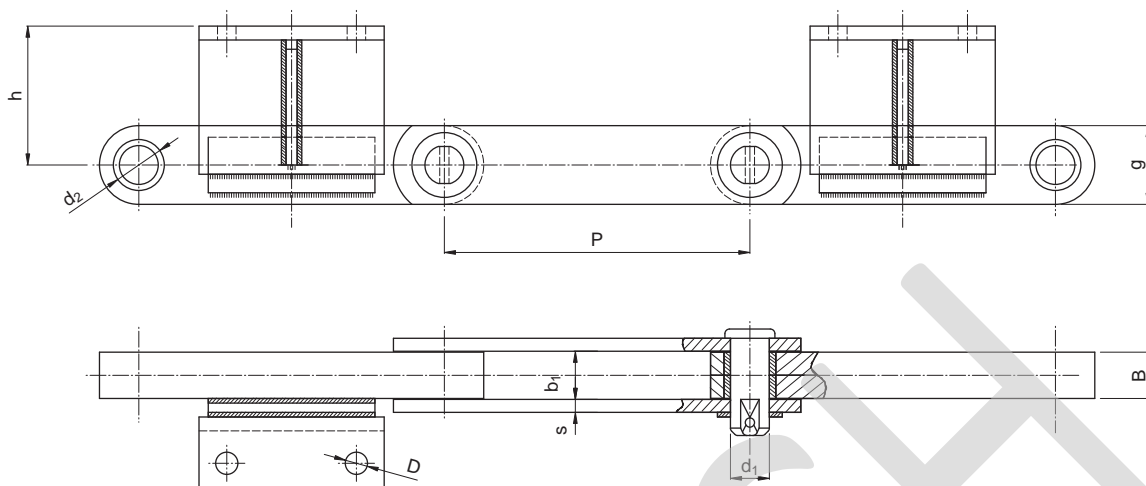


Code	Pitch P	Dimensions mm					MBF kN
		b_1	\emptyset Roller d_3	\emptyset Side roller d_4	g	s	
SDS	250	31	70	100	80	12	460

These dimensions are illustrative and can be varied according to the customer's requirements, such as, for example, to increase the breaking load limit.

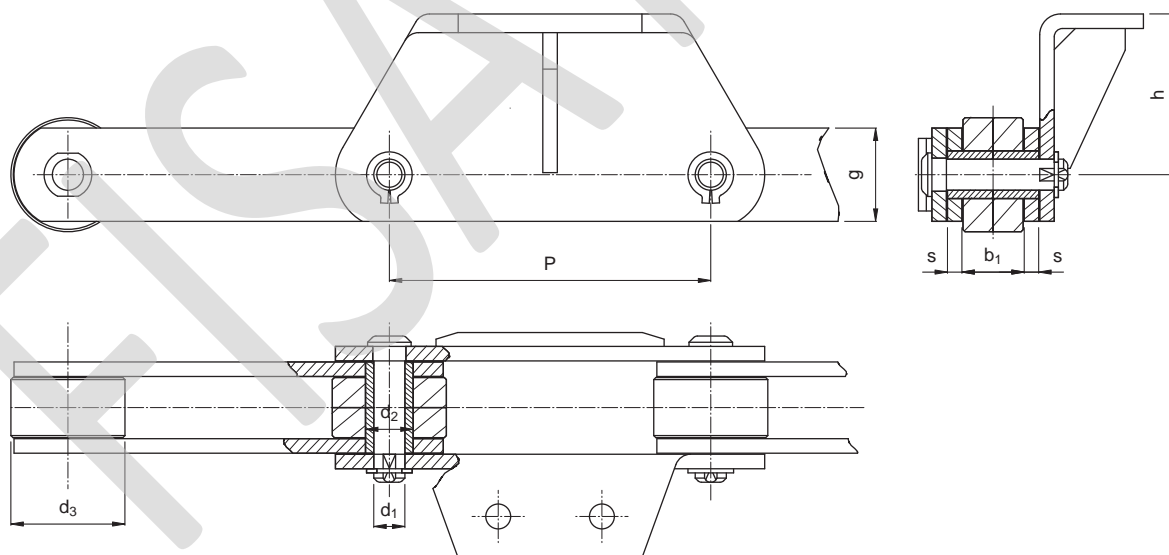
Block chains and overhanging roller chains for scrapers

Detachable block chain with attachments every 2 pitches on one side and slipping skate on the opposite side.



Code	Pitch P	Dimensions mm						MBF kN
		b_1	\varnothing Pin d_1	h	g	B	s	
PHB-1	250	41	36	125	70	40	12	620
PHB-2	315	51	42	135	80	50	15	850

Scraper chain with overhanging rollers

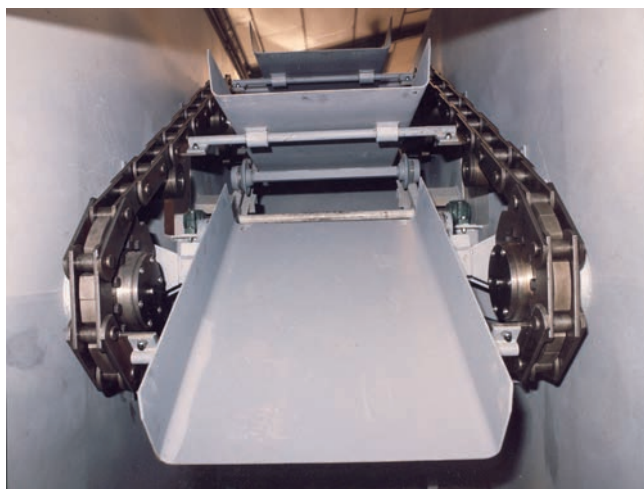


Code	Pitch P	Dimensions mm							MBF kN
		b_1	\varnothing Pin d_1	\varnothing Bush d_2	\varnothing Roller d_3	g	s	h	
PHL-1	250	58	42	50	130	100	15	135	1000
PHL-2	315	60	36	54	130	100	15	-	1100
PHL-3	400	70	36	54	130	100	15	-	1100

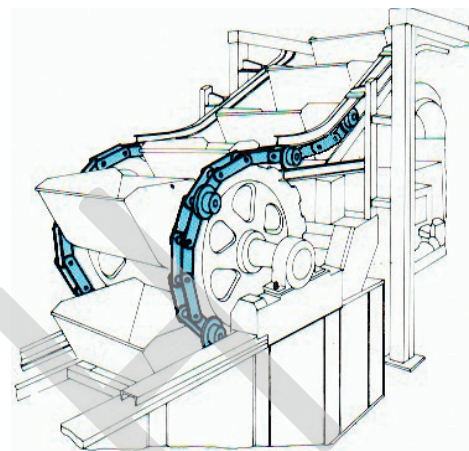
Reinforced conveyor chain

Reinforced chains for folding tray feeders and bucket elevators with attachments and bucket supports.

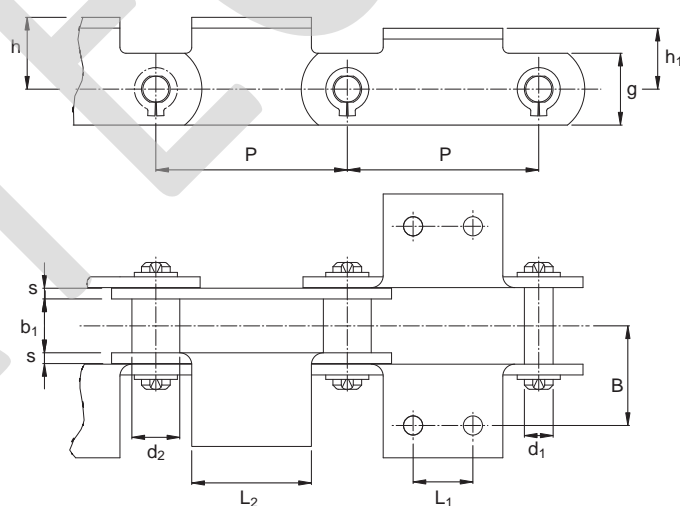
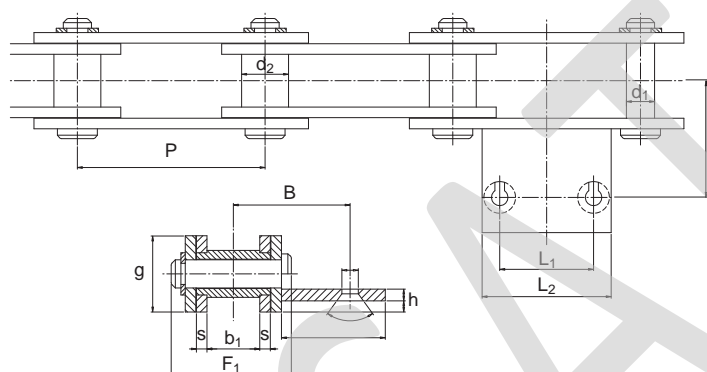
DIN 8175



Folding trays



Bucket elevators



Manufactured with high resistance steels and materials.

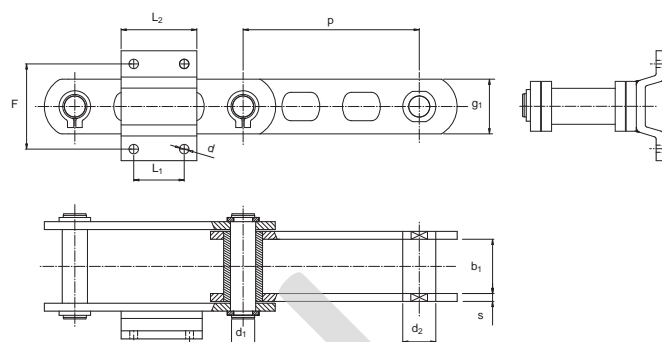
Code	Dimensions mm											Mass kg	MBF kN
	Pitch	Ø Bush	Attach. height			Chain center			Ø Pin	Mass	MBF		
	P	b ₁	d ₂	g	s	h ₁	L ₁	L ₂	d ₁	B	F ₁		
CX-30	160	30	32	60	8	36	40	80	20	62	78	11.8	220
CX-45	160	45	40	70	10	40	40	80	26	74	105	18.2	450
CX-60	160	60	44	80	12	70	40	80	30	80	130	34.4	600
CX-70	160	60	54	90	12	100	30/80	80/12	36	85	135	37.6	700
CX-75	160	75	54	100	12	100	30/80	80/12	36	90	135	45.2	800

Double chain for bucket apron conveyor, linked by crosspiece pins

Detachable chains with outboard rollers every 2 or 4 pitches, on both sides.

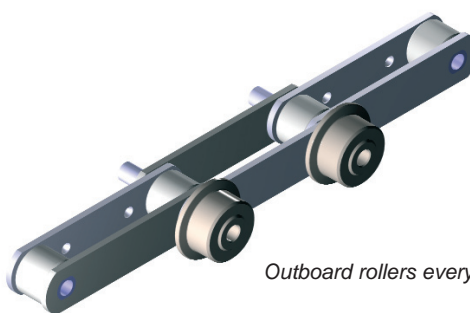
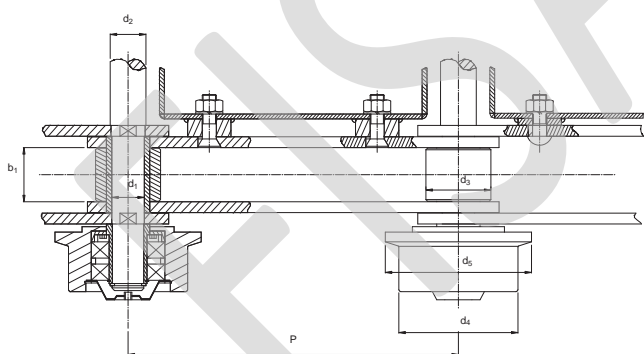


Bucket apron conveyor for clinker.



Code	Dimensions mm											MBF kN	
	Pitch		Ø	Ø	Ø					Ø	Ø		
	P	b ₁	d	d ₂	d ₁	F	L ₁	L ₂	g ₁	s	Flanged roller		Crosspiece pin
SUR-50	200	45	14	32	22	110	60	100	50	8	50	22-28	200
SUR-60	250	65	18	45	32	150	80	120	70	10	60	32-40	320
SUR-70	250	67	18	50	35	150	80	120	80	12	70	35-45	480
SUR-100	280	79	21	58	40	150	80	130	100	12	70	40-45	750
SUR-80	400	79	25	60	42	150	80	140	110	15	80	-	1000

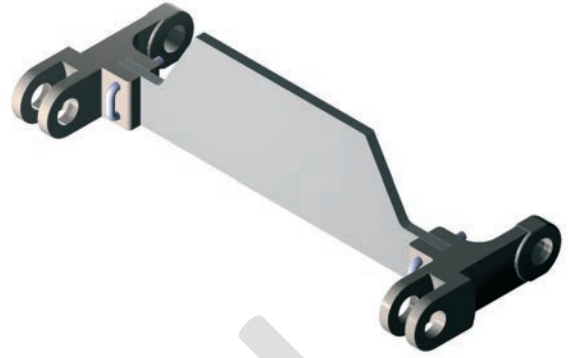
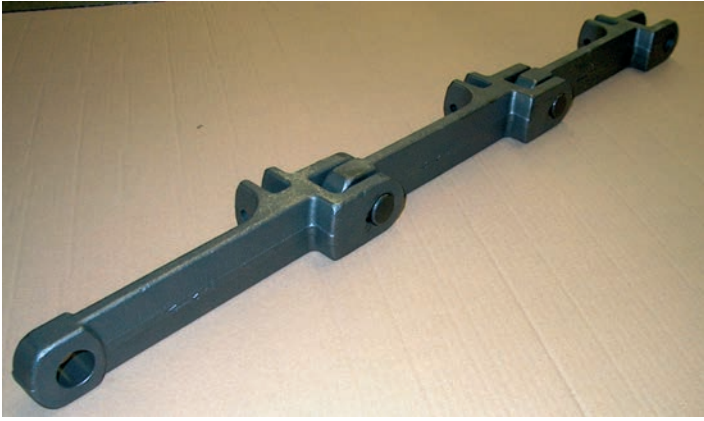
Bucket conveyor chains, linked by crosspiece pins and outboard rollers



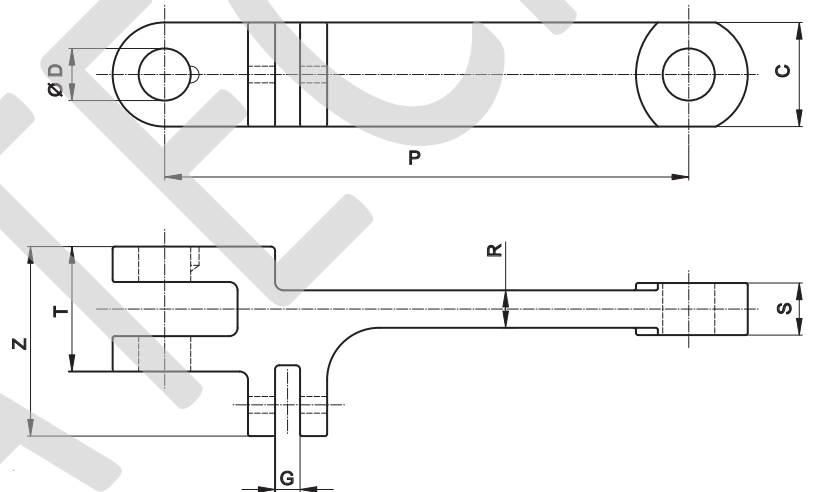
Outboard rollers every pitch or alternate pitches.

Code	Dimensions mm							MBF kN
	Pitch		Ø	Ø	Ø			
	P	b ₁	Pin d ₁ /d ₂	Roller d ₃	Outboard roller d ₄ /d ₅	Plate width	Plate thickness	
GE-1	315-400	55	25/30	50	100/130	60	8	260
GE-2	315-400	65	30/35	60	100/140	65	10	320
GE-3	400	80	36/40	70	180/220	80	12	450

Forged steel scraper chain for twin chain conveyors



Made of CrMn alloy steel, carburized for an extremely high resistance to wear and tear (surface hardness 60-63 HRC, effective hardening depth 1.3-1.5 mm). Alternatively available in quenched CrMo alloy steel.



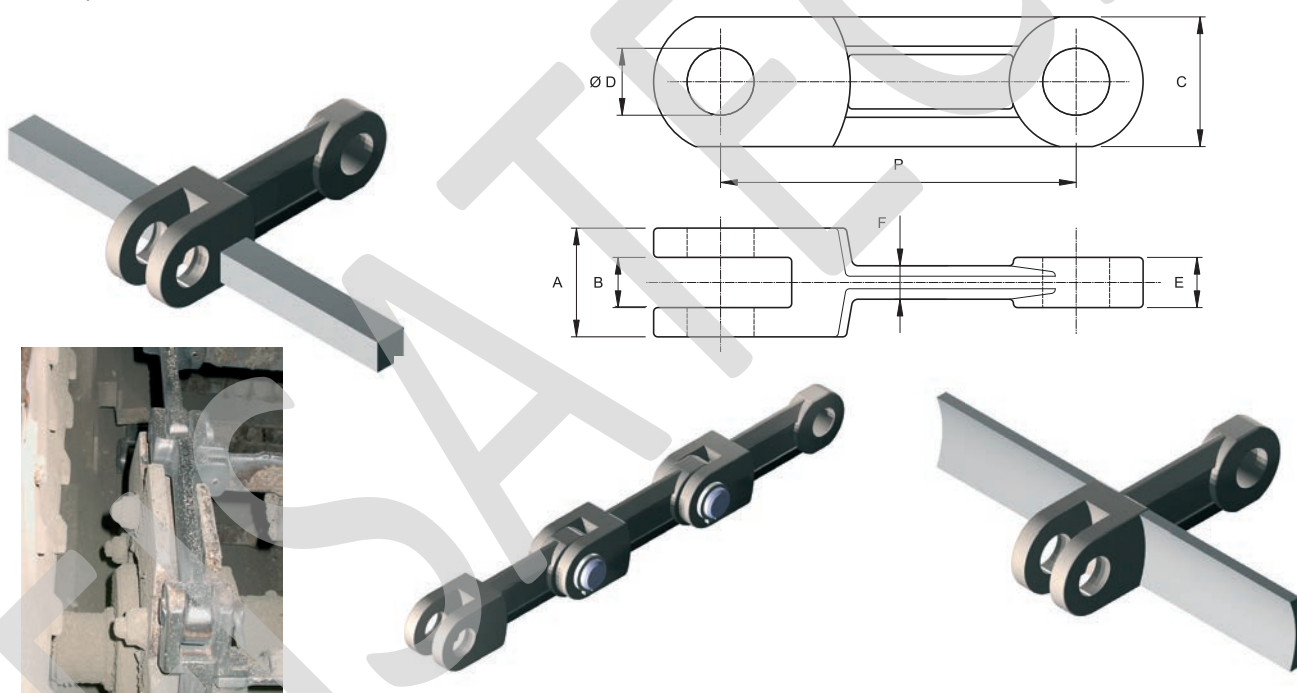
Code	Dimensions mm							
	Pitch P	H	S	T	Z	G	R	D
142-50-19	142	50	19	42	70	12	11	25
142-50-28	142	50	28	62	87	12	15	25
160-53-23	160	53	23	50	82	13	13	25
175-60-30	175	60	30	72	95	16	23	30
200-40-20	200	40	20	46	72	12	14	20
200-50-25	200	50	25	60	81	12	19	25
200-60-30	200	60	30	70	95	13	20	30
250-50-25	250	50	25	60	81	12	19	25
250-60-30	250	60	30	70	95	13	20	30
250-70-45	250	70	45	100	140	21	36	35

Code MN: of CrMn steel, carburized
Code CD: of CrMo steel, quenched

Forged steel scraper chain

Code	Dimensions mm							MBF Steel Mn	MBF Steel CrNi
	P	A	B	C	Ø D	E	F		
101/24	101.6	24	10	36	14	9	6	100	120
101/30	101.6	30	14	36	14	13	9	150	170
125/30	125	30	14	36	16	13	10	130	150
142/24	142	24	10	47	20	9	7	120	140
142/46	142	46	22	40	22	20	13	170	200
142/42	142	42	20	50	25	19	19	260	290
142/54	142	54	27	50	25	25	16	320	360
142/62	142	62	30	50	25	28	28	380	430
150/24	150	24	10	47	20	9	7	120	140
150/421	150	42	18	36	18	17	12	160	180
150/422	150	42	18	47	25	16	12	190	220
160/461	160	46	21	45	22	19	15	230	260
160/462	160	46	25	45	22	23	15	280	320
160/50	160	50	25	53	25	23	13	330	370

Other types on request.

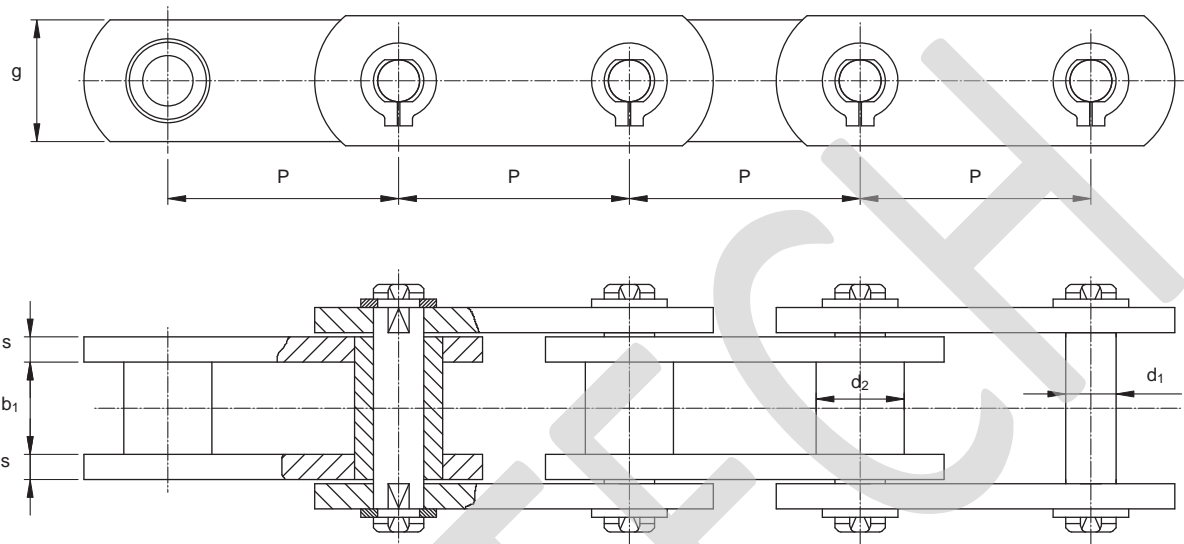


Code	Dimensions mm							MBF Steel Mn	MBF Steel CrNi
	P	A	B	C	Ø D	E	F		
200/60	200	60	27	50	25	25	18	320	360
200/66	200	66	32	60	30	29	20	500	530
220/64	220	64	28	72	35	26	20	490	550
220/58	220	58	30	75	32	28	25	620	700
220/71	220	71	33	75	35	31	21	640	730
250/70	250	70	34	75	34	32	18	620	700
260/65	260	65	34	75	32	32	20	770	880
260/70	260	70	34	75	32	32	20	720	820
260/78	260	78	37	75	32	35	20	800	910

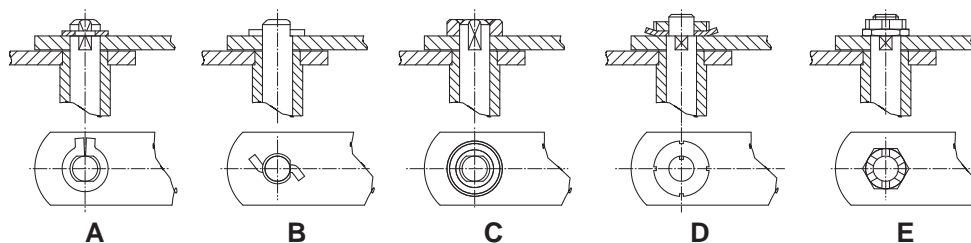
Other types on request.

Bushing chains for elevators and heavy-duty works

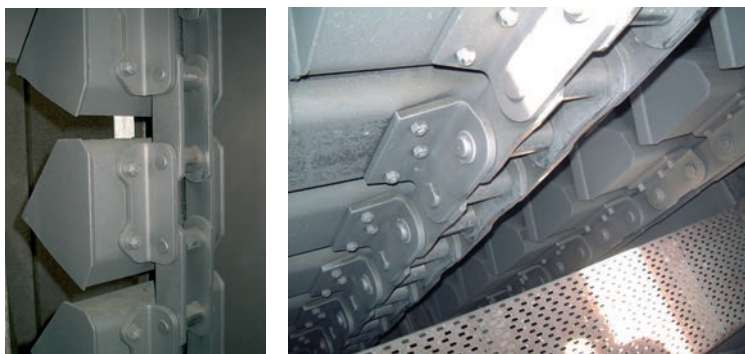
Bushing chains for centrifugal discharge elevators and heavy-duty works, manufactured with alloy steels and special treatments in order to get the maximum resistance to wear and tear. Bushes with case hardening or carbonitriding heat treatment. Quenched sidebars. Pins with induction hardening and special treatment for high resistance to fatigue.



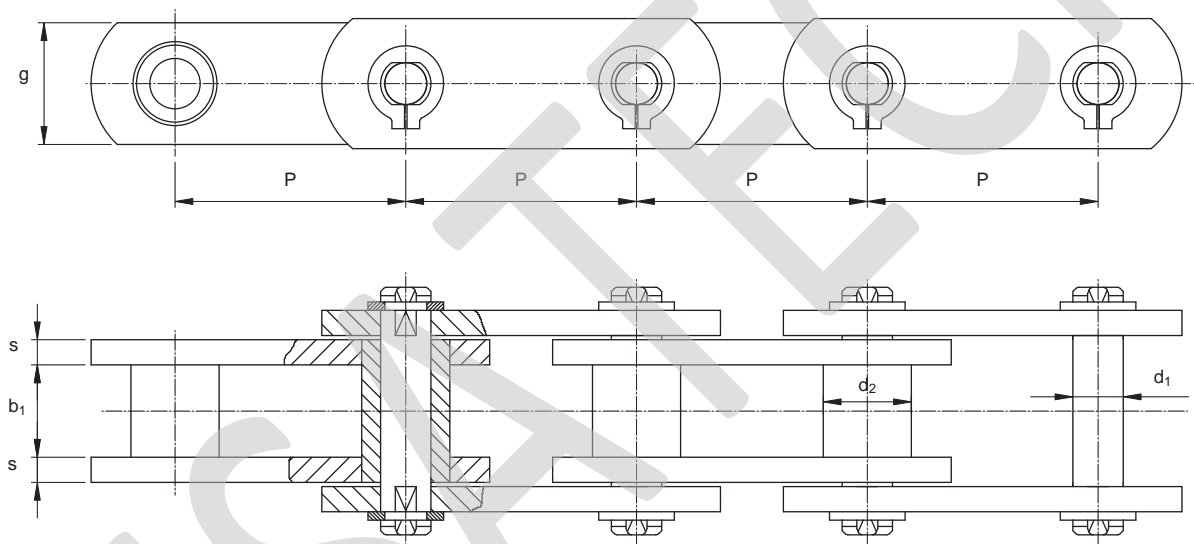
Code	Dimensions mm						Mass kg/m	MBF kN
	Pitch P	b ₁	Bush	Pin	Plate			
			∅ d ₂	∅	g	S		
ECR-30	150	40	36	25	60	8	14.6	300
	160							
ECR-45	160	45	40	26	70	10	21.8	450
	170							
ECR-48	155	48	40	26	70	10	22.5	450
	160							
ECR-50	160	60	40	26	70	10/12	25	500
	170							
ECR-65	160	60	44	30	80	12	32	650
	170							
ECR-70	160	70	44	30	80	12	33.5	700
	170							
ECR-90	160	85	54	36	90	12/15	54.5	900
	170							
ECR-100	170	100	54	36	100	12/15	57.2	1000
	180							
ECR-110	170	110	58	40	110	12/15	76	1100
	180							
ECR-135	180	120	58	40	120	12/15	78	1350
	190							
ECR-150	180	120	65	45	120	15/20	92	1500
	190							



Bushing chains for elevators and heavy-duty works



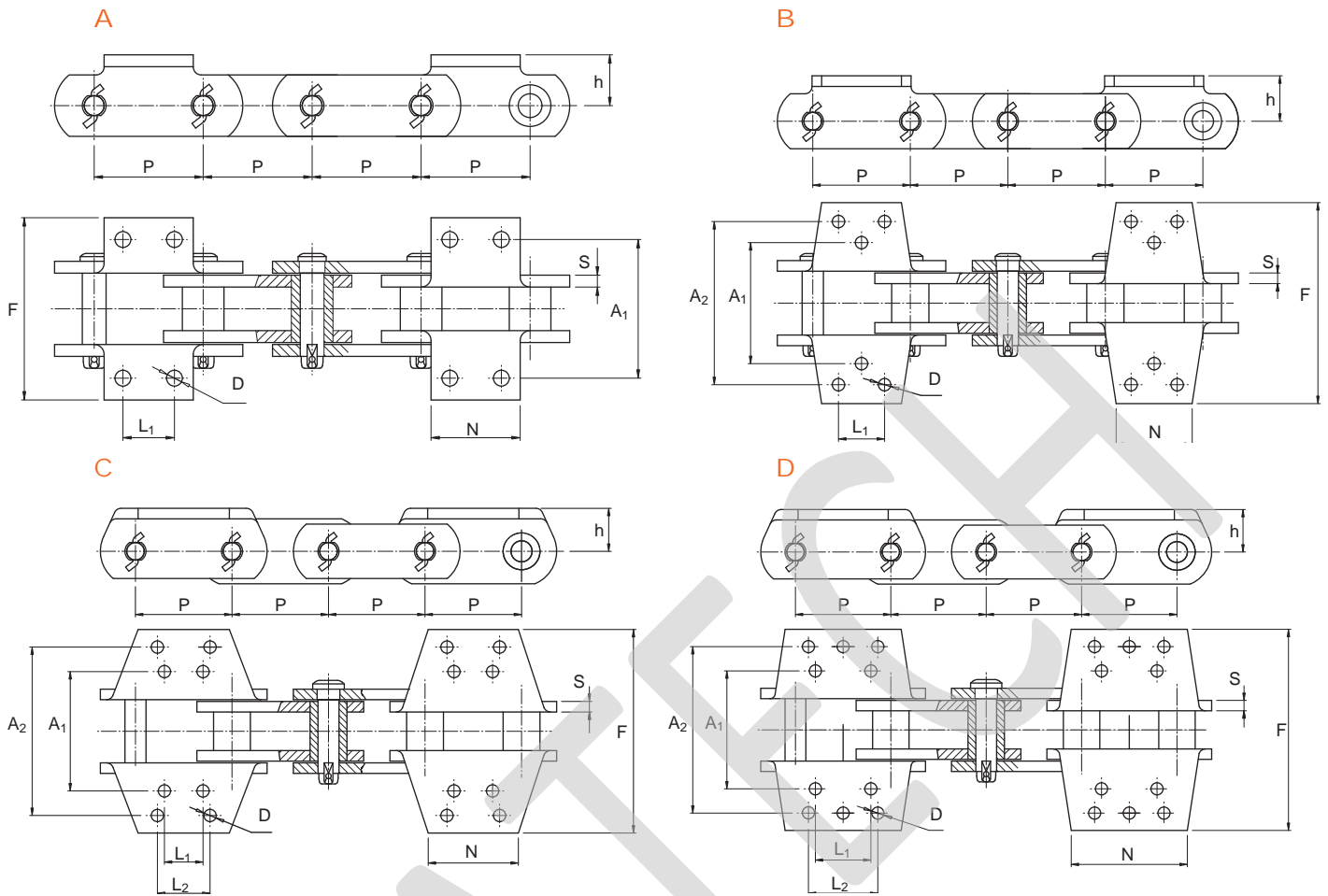
Bushing chains for centrifugal discharge elevators and heavy-duty works, manufactured with alloy steels and special treatments in order to get the maximum resistance to wear and tear. Bushes with case hardening or carbonitrating heat treatment. Quenched sidebars. Pins with induction hardening and special treatment for high resistance to fatigue.



Code	Pitch P	Dimensions mm					Mass kg/m	MBF kN
		Bush		Pin	Plate			
		b ₁	d ₂	d ₁	g	S		
EC-1256	152.4	76.2	44.5	25.4	76.2	12	25	560
EC-2856								650
EC-1857	152.4	76.2	44.5	31.8	83.6	12	30	650
EC-2857								750
EC-3859	152.4	95.3	60.3	31.8	100	16	51	900
EC-2864	177.8	95.3	60.3	31.8	100	16	51	950
EC-3864	177.8	95.3	60.3	31.8	100	16	51	1100
EC-100	177.8	100	54	36	100	12 / 15	58	1000
ECR-120	170	110	58	40	120	12 / 15	74	1200
	180							
ECR-130	180	110	65	43	120	12 / 15	80	1300
ECR-140	180	120	65	45	120	15 / 20	92	1400

Attachments

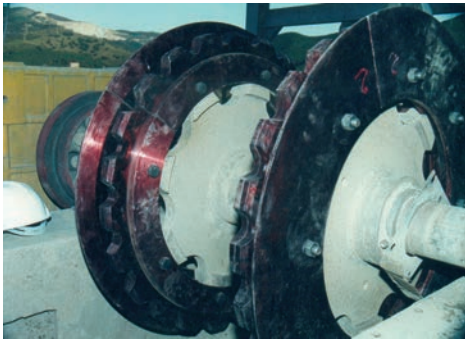
Examples of types and sizes for the attachments.



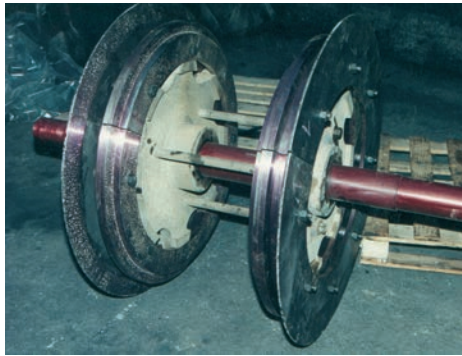
Code	Type	Pitch P	Dimensions mm								
			h	A ₁	A ₂	Approx. F	L ₁	L ₂	N	s	D
EC 2856	A	152.4	47.6	184.2	-	241	63.5	-	108	12	18
EC-3856											
EC-2856	B	152.4	47.6	184.2	298.5	344	63.5	-	108	12	18
EC-3856											
EC-2857	C	152.4	63.5	177.8	304.8	356	88.9	88.9	152.4	12	14.3
EC-3857											
EC-2859	C	152.4	76.2	228.6	330.2	381	70	114.5	152.4	16	17.5
EC-3859											
EC-2864	D	177.8	76.2	228.6	330.2	381	95.3	69.9	197	16	17.5
EC-3864											
E-100	C	177.8	76.2	228.6	330	375	99.5	110	-	16	17.5
ECR-120	C	170/180	86	235	345	385	95/105	115	-	16	17.5
ECR-130	C	180	86	235	345	385	105	125	-	16	17.5
ECR-140	C	180	86	245	355	395	105	130	-	16	17.5

Elevator chain interchangeable with DIN 764

Elevator chain substitute for DIN-764 chain, with bucket attachments.



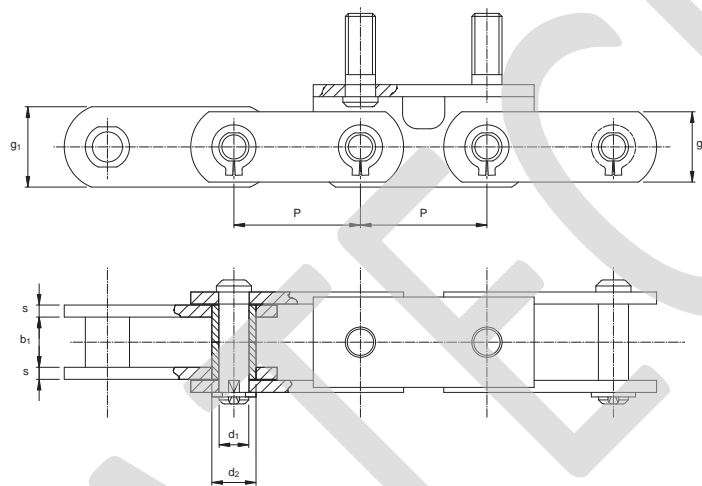
Driving Group



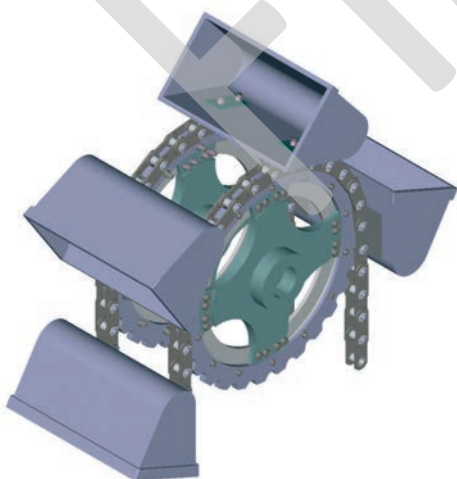
Tensor group



Detachable chain with head pins



Code	Pitch P	b ₁	Dimensions mm		g ₁	g ₂	s	MBF kN
			Ø Pin d ₁	Ø Bush d ₂				
MAR-30	127	50	30	44	80	90	12	650
MAR-36	142	60	36	54	90	100	12	800



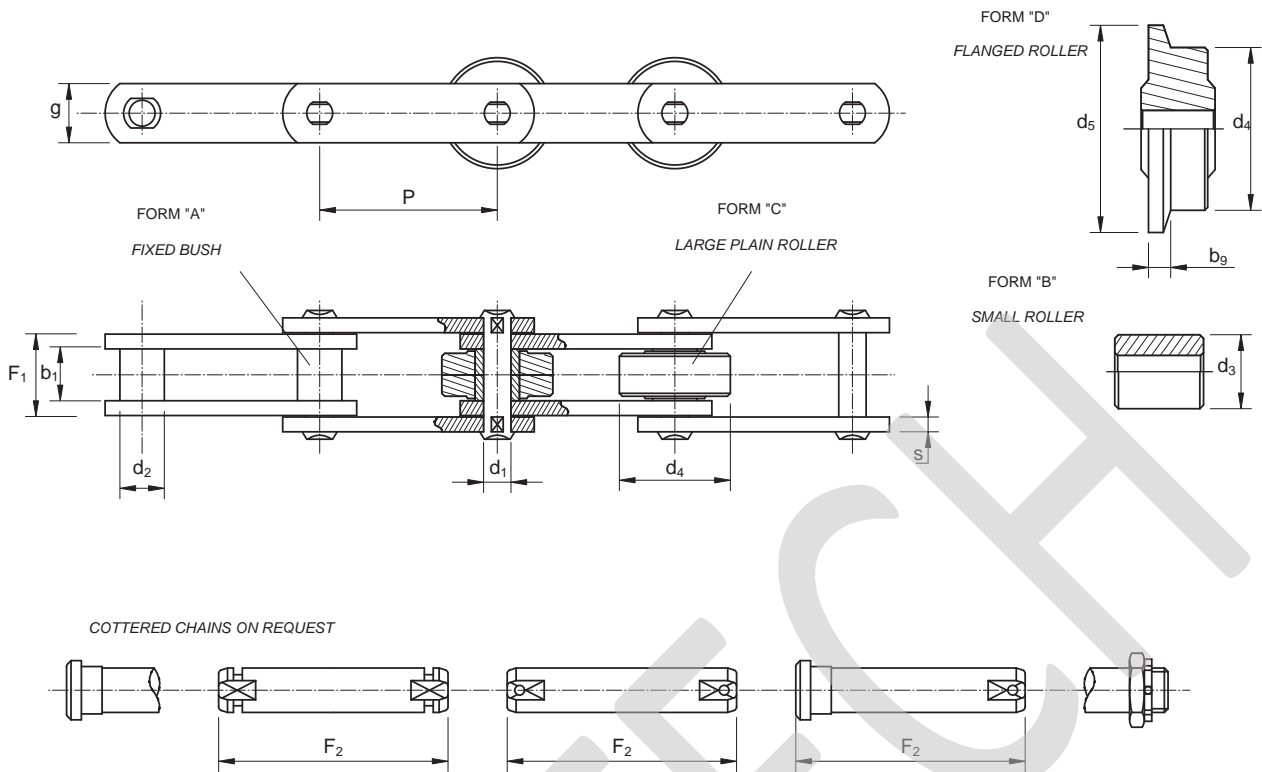
Elevator chain



Assembly of an elevator chain

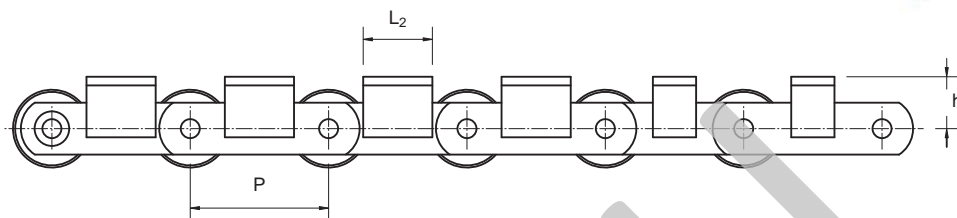
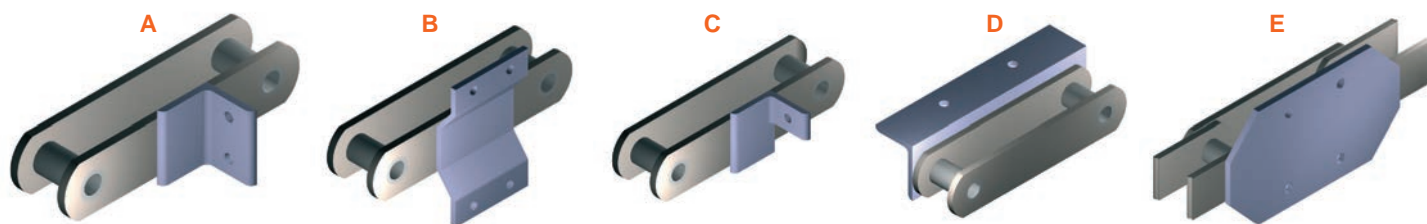
Solid pin conveyor chain

ISO-R 1977/DIN 8167

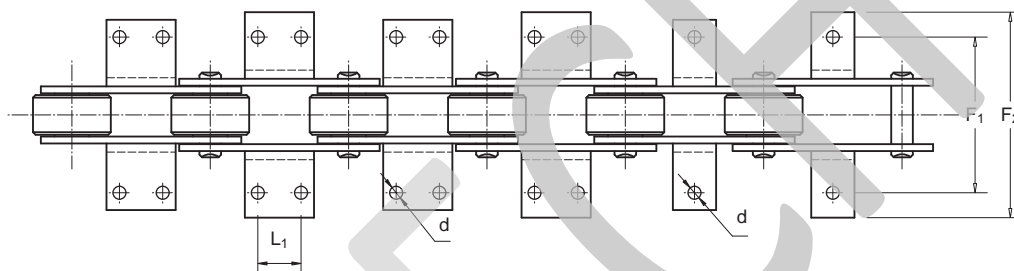


Code ISO/DIN	Pitch P			Dimensions mm											Surface of artic cm ²	MBF kN
				Large roller				g	s	F ₁	F ₂	Small roller d ₃	Bush d ₂	Pin d ₁		
				Ø Roller d ₄	Ø Guide d ₄ /d ₅	Thickness b ₉	b ₁									
M-80	80	100	125	28	50	50/60	5.5	35	5	57	65	25	18	12	4.68	80
	160	200	250													
M-112	80	100	125	32	60	60/70	6.5	40	6	66	74	30	21	15	6.75	112
	160	200	250													
M-160	100	125	160	37	70	70/85	8	50	7	77	86	36	25	18	9.36	160
	200	250	315													
M-224	125	160	200	43	85	85/100	9.5	60	8	88	100	42	30	21	12.6	224
	250	315	400													
M-315	160	200	250	48	100	100/120	11	70	10	103	114	50	36	25	17.5	315
	315	400	500													
M-450	200	250	315	56	120	120/140	13	80	12	122	140	60	42	30	24.6	450
	400	500	630													
M-630	250	315	400	66	140	140/170	15	100	14	142	156	70	50	36	34.56	630
	500	630	800													
M-900	250	315	400	78	170	170/210	17	120	16	165	185	85	60	44	49.28	900
	500	630	800													

Solid pin conveyor chain



Attachments K1 and K2



Code	ISO/DIN	L	Pitch P											d	F ₁	F ₂	h	Angular plates	
			40	50	63	80	100	125	160	200	250	315	400						500
M-80	L ₁	-	-	-	-	50	85	125	125	125					11	96	142	35	40x4
	L ₂ max.	-	-	-	22	22	75	110	150	150	150				14	110	159	40	50x6
M-112	L ₁	-	-	-	-	35	65	100	100	100	100				14	124	188	45	50x6
	L ₂ max.	-	-	-	28	28	65	95	130	130	130	130			14	124	188	45	50x6
M-160	L ₁	-	-	-	-	-	50	85	145	145	145	145			18	140	218	55	60x8
	L ₂ max.	-	-	-	-	30	30	80	115	175	175	175	175		18	140	218	55	60x8
M-224	L ₁	-	-	-	-	-	-	65	125	190	190	190			18	160	252	65	70x9
	L ₂ max.	-	-	-	-	35	35	100	160	225	225	225			18	160	252	65	70x9
M-315	L ₁	-	-	-	-	-	-	50	100	155	155	155			18	180	288	75	70x9
	L ₂ max.	-	-	-	-	-	35	85	135	190	190	190			18	180	288	75	70x9
M-450	L ₁	-	-	-	-	-	-	-	85	155	240	240			24	230	326	90	100x12
	L ₂ max.	-	-	-	-	-	-	40	125	195	280	280			24	230	326	90	100x12
M-630	L ₁	-	-	-	-	-	-	-	-	100	190	300			30	280	447	110	120x15
	L ₂ max.	-	-	-	-	-	-	-	50	150	240	350			30	280	447	110	120x15
M-900	L ₁	-	-	-	-	-	-	-	-	65	155	240			30	280	447	110	120x15
	L ₂ max.	-	-	-	-	-	-	-	60	125	215	300			30	280	447	110	120x15

Chain for plate conveyors with outboard rollers

Special chain with joints articulating in one direction and attachments on both sides. Alternative solution with attachments on only one side. Attachment positioning according to customer request.

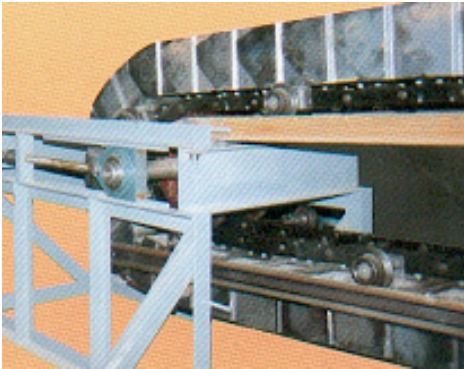
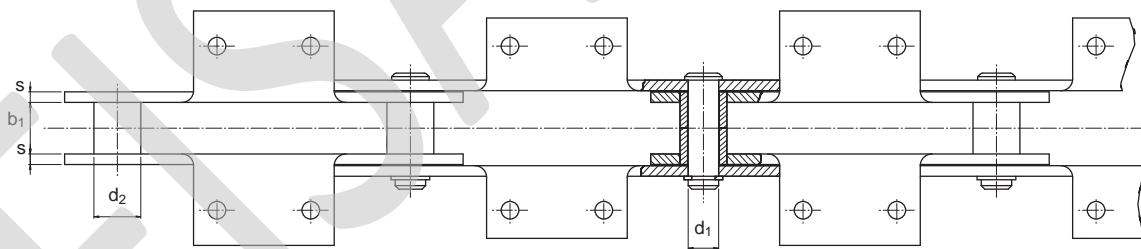
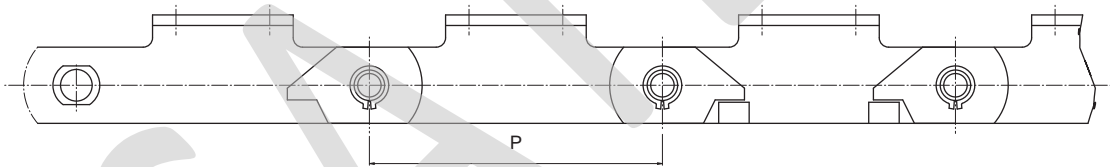
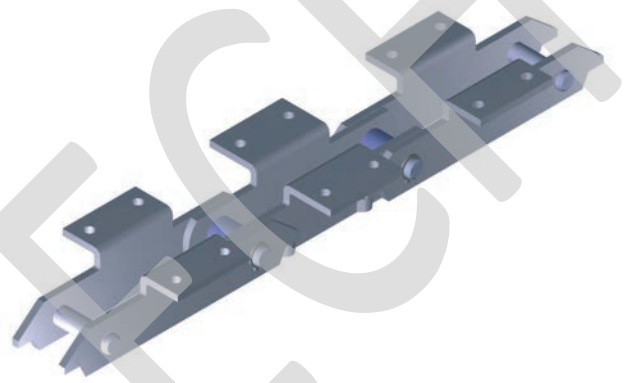
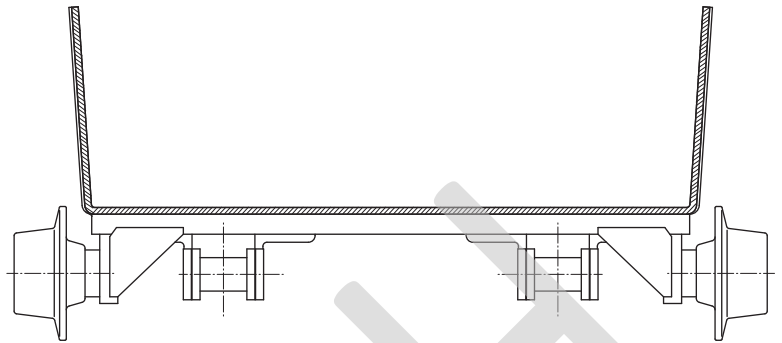
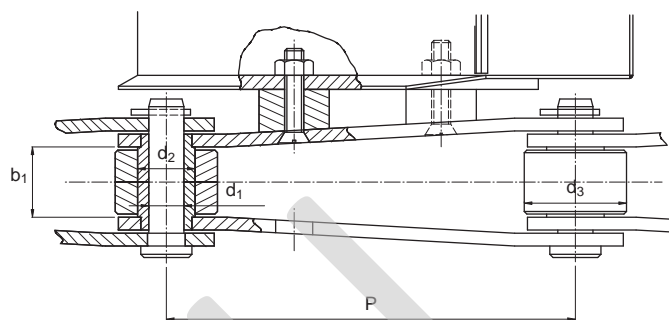
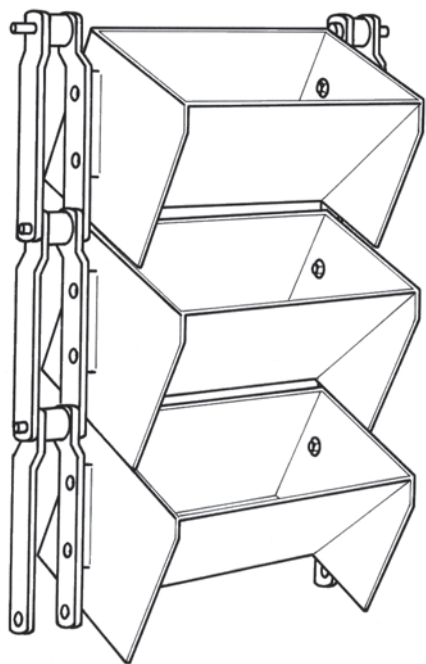


Plate conveyor



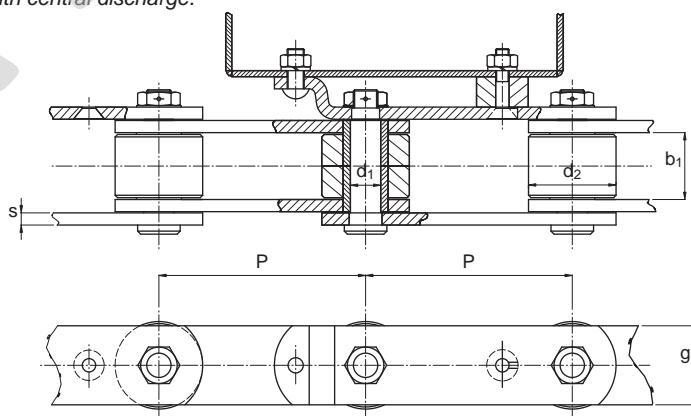
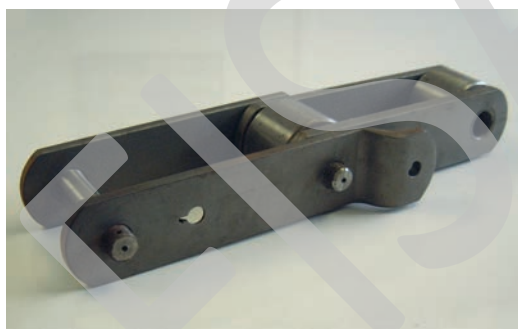
Code	Pitch	Dimensions mm					MBF kN
		b_1	d_2	d_1	g	s	
PL-15	200	35	26	18	45	6	150
PL-25	250	40	32	20	60	8	250
PL-35	250	45	36	25	65	10	350
PL-40	250	45	40	26	70	10	400
PL-45	250	50	42	30	70	10	450
PL-50	250	60	44	30	80	10	500
PL-65	250	60	44	30	80	12	650
PL-85	250	60	54	36	100	12	850

Bent chain for high capacity bucket conveyors



Code	Pitch P	b ₁	Dimensions mm				Plate width s	MBF kN
			∅ Pin d ₁	∅ Bush d ₂	∅ Roller d ₃	∅ Roller d ₄		
FL-400	400	76	38	58	114.3	90	16	700
FL-457	400	76	40	58	114.3	90	16	750

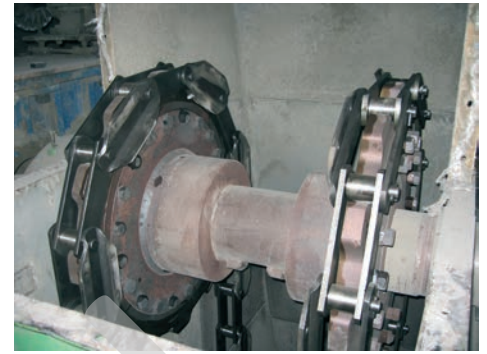
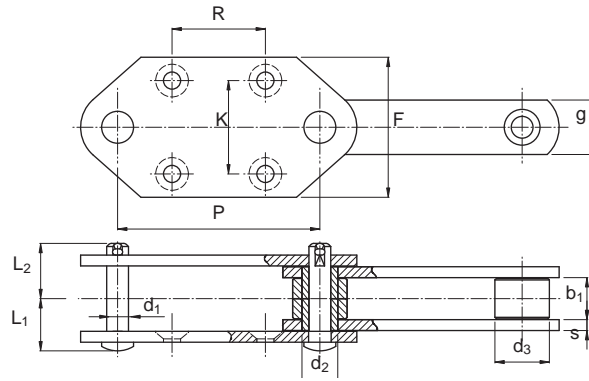
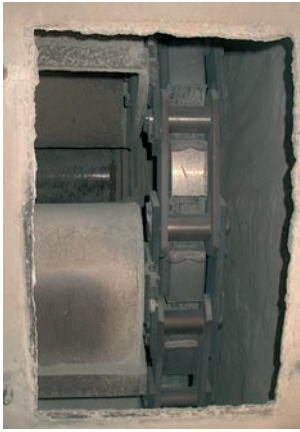
Reinforced chain for lateral subjection. External bent sidebar. For machines with central discharge.



Code	Pitch P	b ₁	Dimensions mm				s	s ₁	MBF kN
			∅ Pin d ₁	∅ Roller d ₂	g	g			
FR-70	225	70	32	90	80	12	12	700	
FR-80	225	70	36	100	90	12	14	800	
FR-65	225	81	30	88.9	90	12	12	700	

These dimensions are illustrative and can be varied according to customer's requirements, such as for example, to increase the breaking load limit.

Chain for bucket elevators with lateral attachments

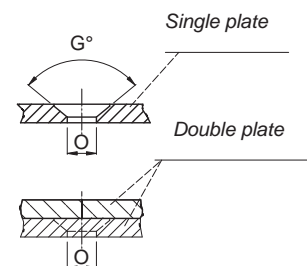


Detachable chain with head pins

Code	Pitch P	Dimensions mm								MBF kN
		b ₁	∅ Pin d ₁	∅ Bush d ₂	∅ Roller d ₃	g	s	L ₁	L ₂	
B-2620	200	55	36	50	-	80	10	70	78	575
B-2625	250	55	36	50	-	80	10	70	78	575
B-3625	250	66.7	30	42	57.2	80	12	70	78	885
B-3630	300	66.7	30	42	57.2	80	12	81	78	885
B-3635	350	66.7	30	42	57.2	80	12	81	78	885
B-6030	300	77	36	50	70	90	14	88	85	1060
B-6035	350	77	36	50	70	90	14	88	85	1060
B-6040	400	77	36	50	70	90	14	88	85	1060
B-9035	350	88	42	60	85	110	16	101	96	1660
B-9040	400	88	42	60	85	110	16	101	96	1660

Bucket support plates

Code	Pitch P	Dimensions mm					G°
		F	R	K	O		
B-2620	200	120	120	80	12	90°	
B-2625	250	150	140	100	16	90°	
B-3625	250	150	140	100	19	90°	
B-3630	300	150	170	100	19	90°	
B-3635	350	200	200	140	24	90°	
B-6030	300	200	170	140	24	90°	
B-6035	350	240	200	170	28	60°	
B-6040	400	280	230	200	35	60°	
B-9035	350	240	200	170	28	60°	
B-9040	400	280	230	200	35	60°	



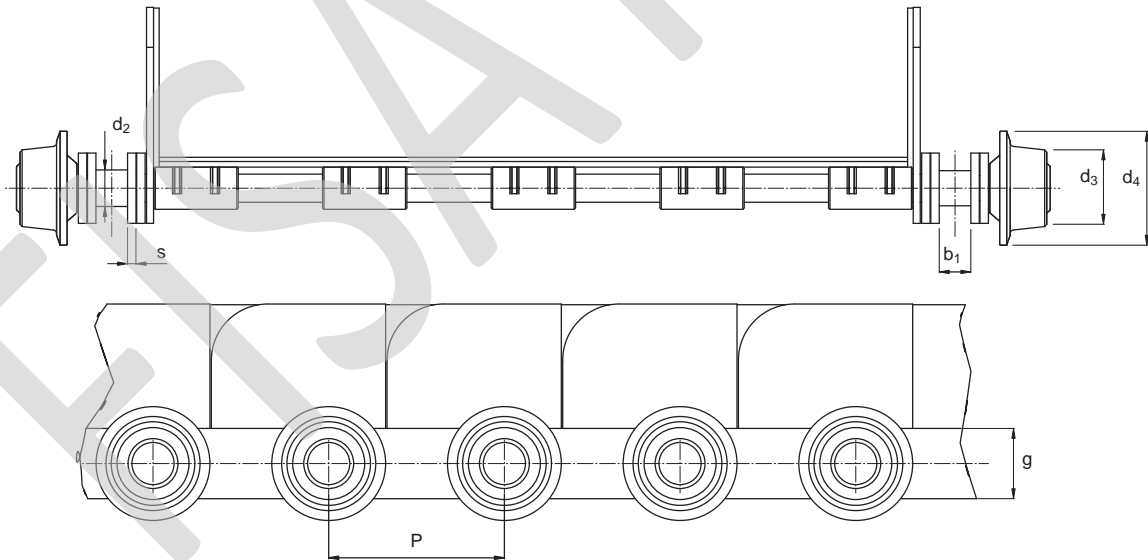
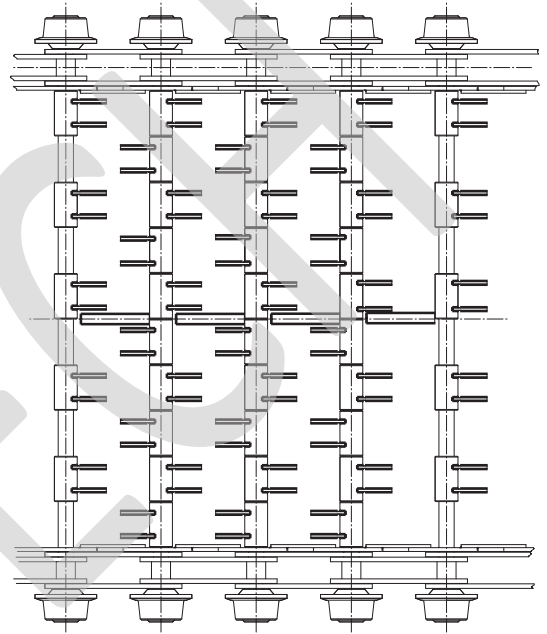
Chain for feeders with joint metal belts



Special conveyor with reinforced plates



Jointed metallic belts with double side reinforced chains.
Chain assembly and jointed plates for extra heavy loads.

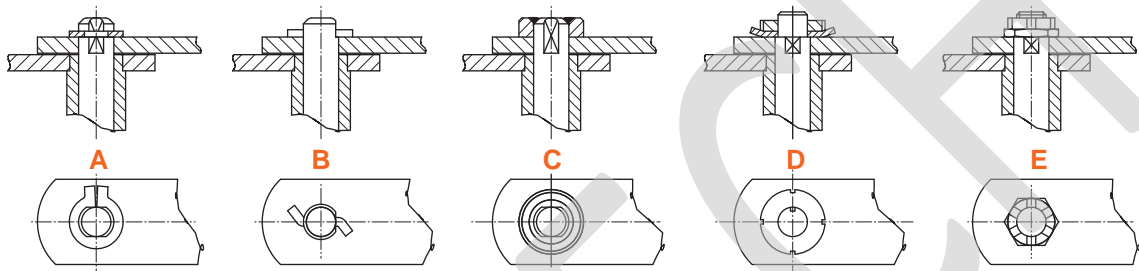


Code	Dimensions mm								Total width
	Pitch		Ø Pin	Ø Bush	Ø Roller	Ø Roller			
	P	b ₁	d ₂	d ₃	d ₄	g	s		
BED-12	250	45	40	58	120	155	100	10	1200
BED-15	250	60	42	60	130	160	110	12	1500

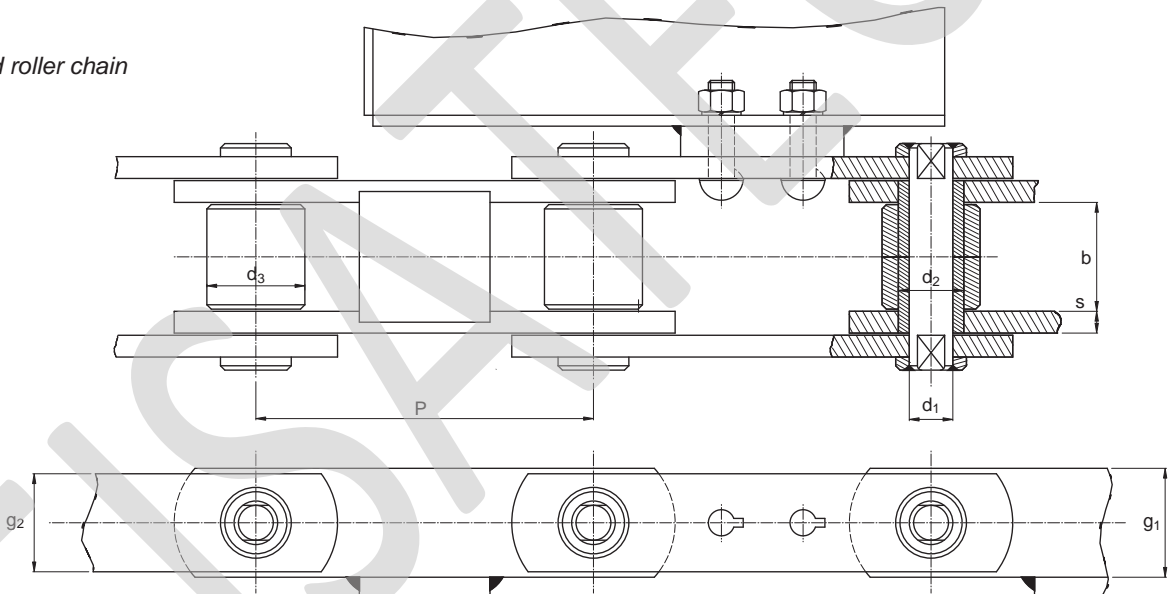
Chain for central unloading bucket elevators



Detachable pins. Different options according to requirement.



Strengthened roller chain

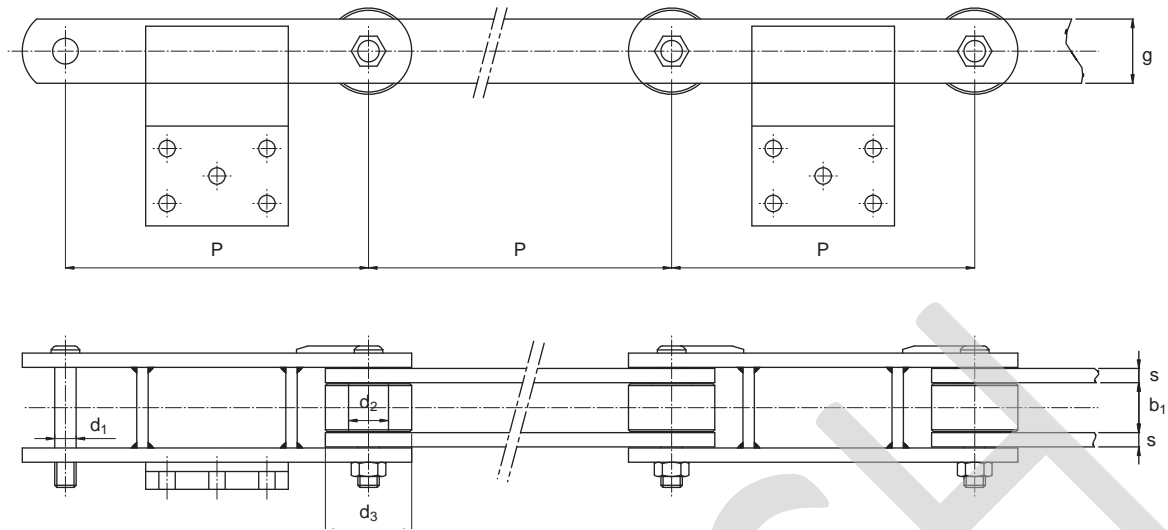


Code	Pitch P	Dimensions mm							MBF kN
		b	Ø Bush d ₂	Ø Pin d ₁	Ø Roller d ₃	g ₂	g ₁	s	
F-16	200	45	30	20	42	50	50	5	160
F-25	200	55	36	25	50	60	60	5	250
F-35	250	65	42	30	60	70	60/70	10	350
F-71	250-315	80	50	35	70	80	90	12	710
F-80-R	250-315	100	60	42	80	90	90/100	12	600
F-100	315-400	100	60	42	80	110	110	15	800

These dimensions are illustrative and can be varied according to customer's requirements, for example, to increase the breaking load limit.

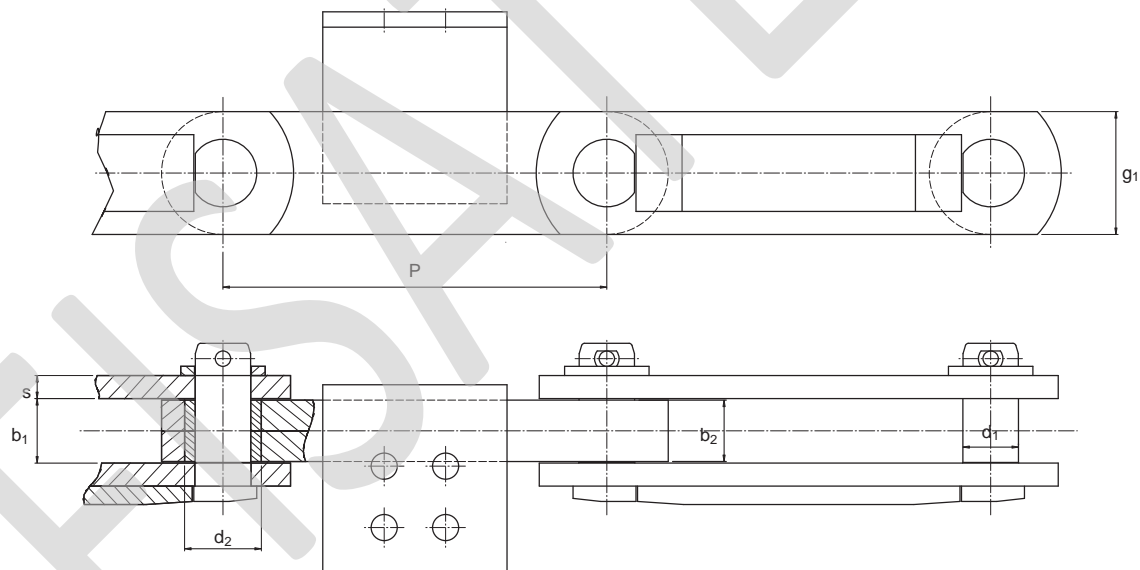
Roller and block chain for scrapers

Roller chain



Code	Pitch P	Dimensions mm						MBF kN
		b_1	\emptyset Bush d_2	\emptyset Pin d_1	\emptyset Roller d_3	g	s	
RV-1	425	70	54	36	110	90	20	1400

Block chain

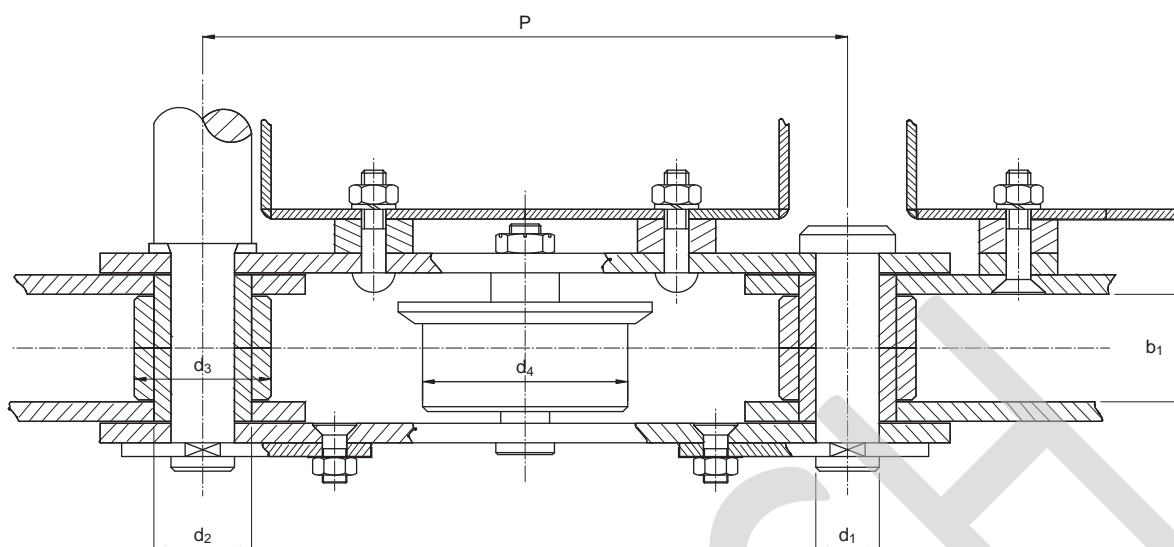


Code	Pitch P	Dimensions mm						MBF kN
		b_1	\emptyset Bush d_2	\emptyset Pin d_1	Block b_2	g_1	s	
BQ-01	250	42	42	30	70x40	70	15	620
BQ-02	250	42	50	36	80x40	80	15	950
BQ-03	350	52	50	36	80x50	80	15	1050

These dimensions are illustrative and can be varied according to the customer's requirements, such as, for example, to increase the breaking load limit.

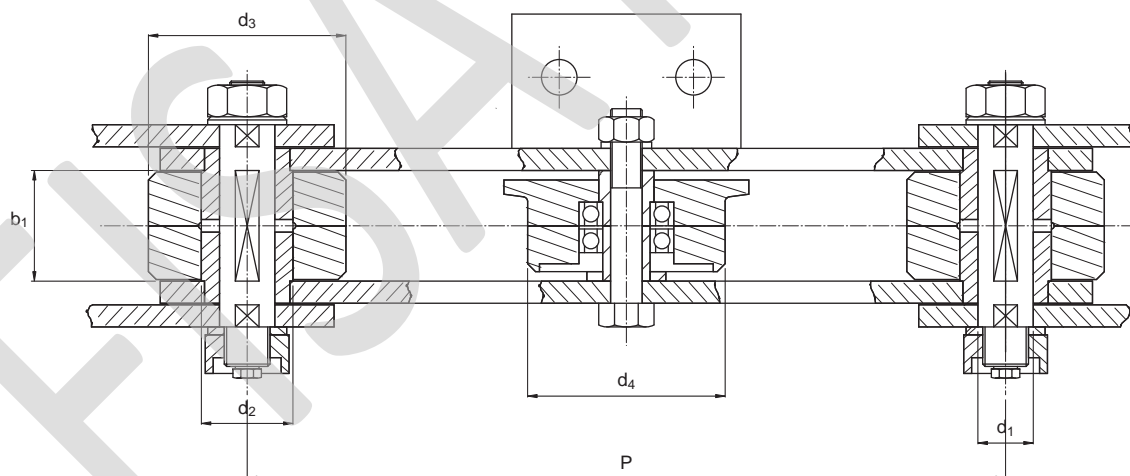
Roller chain for bucket elevators

Great capacity and high efficiency chain.



Code	Pitch P	Dimensions mm							MBF daN
		\emptyset Pin d ₁	\emptyset Bush d ₂	\emptyset Roller d ₃	\emptyset Central roller d ₄	Plate width b ₁	Plate thickness		
TRC-400	400	28	40	100	105/130	70	10	40000	
TRC-450	400	42	60	80	130/160	100	12	62600	

Chain as specified above, but linked by buckets



Code	Pitch P	Dimensions mm									MBF kN
		\emptyset Pin d ₁	\emptyset Bush d ₂	\emptyset Roller d ₃	\emptyset Central roller d ₄	Inner plate width	Outer plate width	Inner plate thickness	Outer plate thickness		
MRC-130	400	28	40	100	105/130	70	65	10	9	270	
MRC-140	400	36	50	80	110/140	80	70	10	10	380	
MRC-140/1	400	42	60	110	110/140	100	100	10	10	560	

These dimensions are illustrative and can be varied according to customer's requirements, such as, for example, to increase the breaking load limit.