

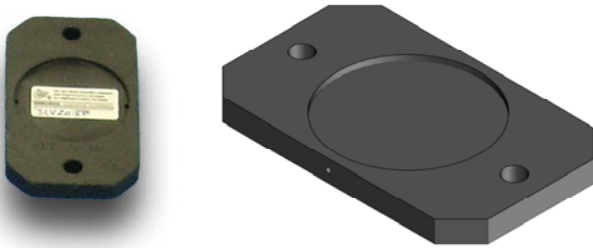
art.UNDERFOOT PAD SLV...SP

NON-SLIP BASE PLATE

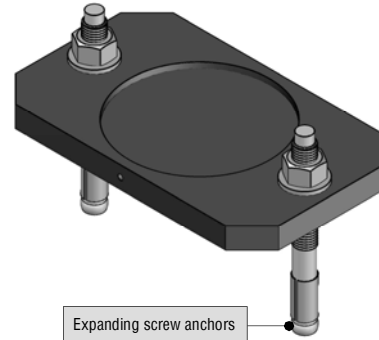
This accessory, for placing under the pivot foot, is designed for applications using our levelling Stabilisers where there is a need for maximum stability of floor positioning with a greater footprint than that offered by the Pivot foot alone. The fixing to the floor takes place by means of two expanding screw anchors (anchors supplied by us together with the plate) so that vibrations will not alter the machine position. The base plates are made from iron (Fe) and nitrided for protection that allows for better wear and resistance to weathering and oxidation.

In cases where there is a risk of structural/machinery tipping, we recommend using our Anti-Tip Brackets as shown on the following pages.

Non-slip base plate.

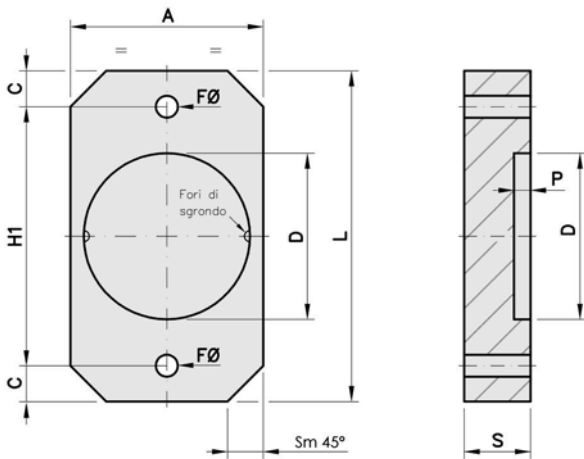


Fitted non-slip base plate.

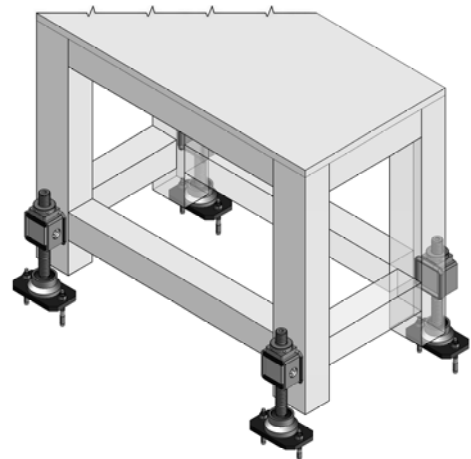


Expanding screw anchors

Diagram of Non-slip base plate.



Example of application using Non-slip base plates.



Approximate weight excluding fitting bolts.

| Mod. | CODE | ARTICLE | A | S | L | Sm 45° | FØ | EXPANDING SCREW ANCHORS | H1 | C | D | P | WEIGHT Kg |
|------|---------|-----------|-----|----|-----|--------|------|-------------------------|-----|------|-------|---|-----------|
| 20 | 2AC0020 | SLV 20 SP | 70 | 12 | 120 | 12,5 | 9,5 | M8x75 | 95 | 12,5 | 60,3 | 3 | 0,600 |
| 25 | 2AC0025 | SLV 25 SP | 75 | 12 | 120 | 12,5 | 9,5 | M8x75 | 95 | 12,5 | 65,3 | 3 | 0,720 |
| 30 | 2AC0030 | SLV 30 SP | 80 | 12 | 150 | 15 | 9,5 | M8x75 | 120 | 15 | 70,3 | 3 | 0,950 |
| 35 | 2AC0035 | SLV 35 SP | 85 | 12 | 150 | 15 | 11,5 | M10x90 | 120 | 15 | 75,3 | 3 | 0,980 |
| 40 | 2AC0040 | SLV 40 SP | 90 | 12 | 150 | 15 | 11,5 | M10x90 | 120 | 15 | 80,3 | 3 | 1,030 |
| 45 | 2AC0045 | SLV 45 SP | 100 | 12 | 160 | 15 | 11,5 | M10x90 | 130 | 15 | 85,3 | 3 | 1,320 |
| 50 | 2AC0050 | SLV 50 SP | 100 | 15 | 160 | 15 | 13,5 | M12x100 | 130 | 15 | 90,3 | 4 | 1,600 |
| 55 | 2AC0055 | SLV 55 SP | 120 | 15 | 180 | 15 | 13,5 | M12x100 | 150 | 15 | 100,3 | 4 | 2,150 |
| 60 | 2AC0060 | SLV 60 SP | 120 | 15 | 180 | 15 | 13,5 | M12x100 | 150 | 15 | 100,3 | 4 | 2,150 |