

art.BP

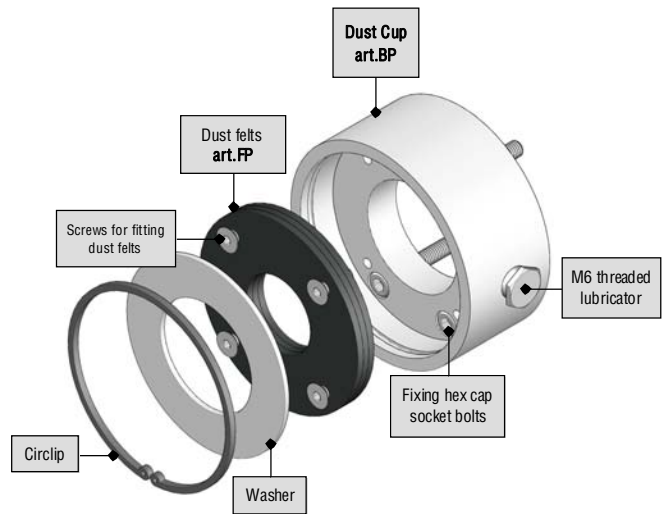
**DUST CUP with lubricator mod.20/60 for use on flange nuts**

The **Dust Cup with lubricator** is an accessory that can be applied to our standard flange nuts from TR20 to TR60 either from the flange side (as with art.FDS) or from the body of the nut with the aid of **Junction spacer art.DDG**, thereby obtaining total protection of both ends of the nut.

The product comprises an **anodized aluminium cylinder** in which are positioned some dust filters similar to those used in the Safety Flange. For screws smaller than TR20 we advise looking at the "Excellent" support that is complete with Dust Cup cylinder (see Technical Catalogue GDM).

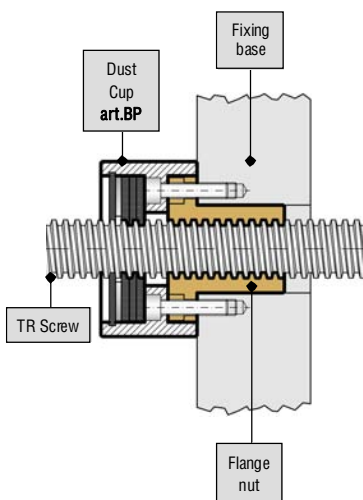
**The primary function of this accessory is the protection (from one or both ends) of the nut preventing the entry of dust and impurities that could damage the scrolling of the mechanism.** The Dust Cup "BP" has the same protective functions of 'art.FDS, but with the difference that it does not have a load bearing function, it does, however, have a smaller footprint. For mounting the Dust Cup on the flange end you use the same threaded holes used for fitting the flange nut, whilst for the second (mounted as a pair) new threads have to be made or the original destroyed. To afford greater protection of the screw and nut, a manifold (available on request), can be fitted to the Dust Cup for attaching a flexible rubber protective cover.

• **COMPOSITION OF DUST CUP art.BP:**

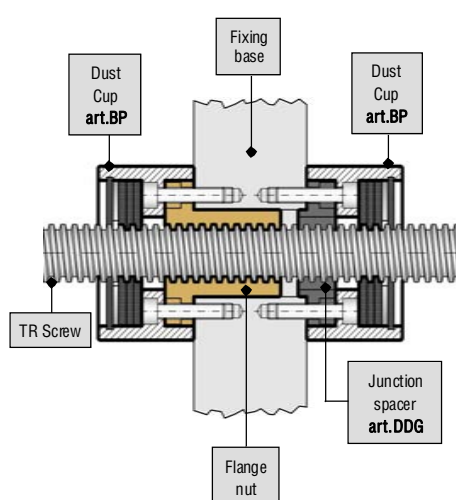


• **HORIZONTAL AND VERTICAL APPLICATION WITH PROTECTION OF THE THREAD PROFILES:**

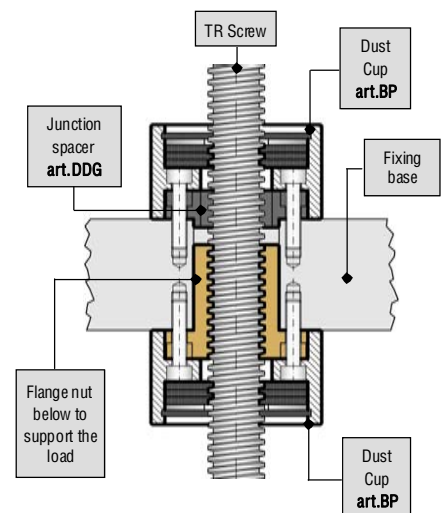
HORIZONTAL USE



HORIZONTAL USE WITH 2 X "BP"

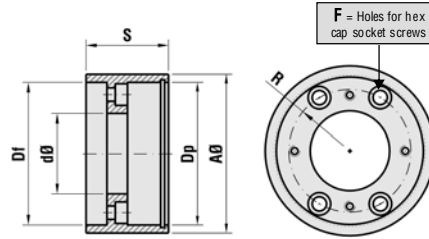
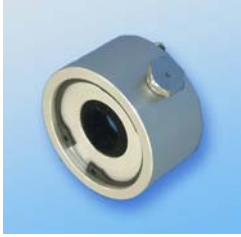


VERTICAL USE WITH 2 X "BP"



For the CFB nut with hole and lubrication channel see spares for the Excellent Steel transmission groups in Technical Catalogue GDM ([www.bimeccanica.it](http://www.bimeccanica.it))

**art.BP** DUST CUPS mod.20/60 with dust felts and lubricator.

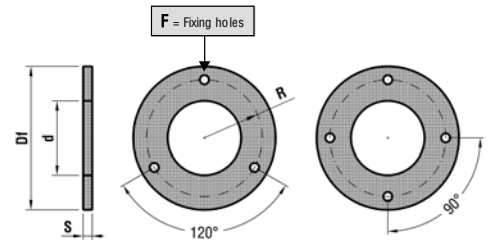


**On request:**

Manifold for rubber protective cover (dimensions page 67)

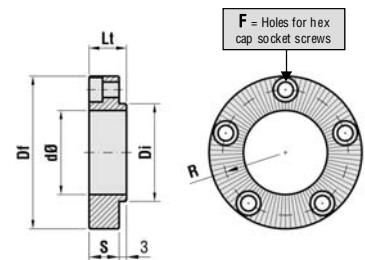
FOR FLANGE NUTS	CODE	ARTICLE	AØ	S	Df	Dp	dØ	R	F screw hole size	F number of screws	WEIGHT Kg
TR 20x4 - TR 22x5	A04A2022	BP 20 22	60	33	50,3	50,2	25	20	M5	3	0,150
TR 24x5 - TR 25x5 - TR 26x5	A04A242526	BP 24 25 26	70	39	60,3	60,2	30	24	M6	3	0,220
TR 28x5 - TR 30x6 - TR 32x6	A04A283032	BP 28 30 32	75	40	65,3	65,2	35	26,5	M6	3	0,250
TR 35x6 - TR 36x6	A04A3536	BP 35 36	85	40	75,3	75,2	40	31,5	M6	4	0,300
TR 40x7	A04A40	BP 40	90	40	80,3	80,2	45	34	M6	4	0,310
TR 45x8 - TR 46x8	A04A4546	BP 45 46	100	45	85,3	85,2	50	36,5	M6	4	0,440
TR 50x8	A04A50	BP 50	100	45	90,3	90,2	55	39	M6	4	0,360
TR 55x9	A04A55	BP 55	110	53	100,3	100,2	60	42,5	M8	4	0,530
TR 60x9	A04A60	BP 60	120	55	105,3	105,2	65	45	M8	4	0,680

**art.FP** DUST FELTS series "FP200BET/L" for Dust Cups.



FOR DUST CUPS	CODE	ARTICLE	Df	d	S	FP number of felts	R	F Ø fixing hole	F number of holes	WEIGHT (Kg) each
BP 20 22	00122022	FP 220-50/16	50	16	3	3	19	Ø4	3	0,002
BP 24 25 26	0012242526	FP 225-60/20	60	20	3	3	21,5	Ø4	3	0,002
BP 28 30 32	0012283032	FP 230-65/24	65	24	3	3	24	Ø4	3	0,003
BP 35 36	00123536	FP 235-75/28	75	28	3	3	29,5	Ø4	4	0,004
BP 40	001240	FP 240-80/32	80	32	3	3	32	Ø4	4	0,004
BP 45 46	00124546	FP 245-85/36	85	36	3	4	35	Ø4	4	0,004
BP 50	001250	FP 250-90/42	90	42	3	4	37,5	Ø4	4	0,005
BP 55	001255	FP 255-100/46	100	46	3	4	40	Ø5	4	0,006
BP 60	001260	FP 260-105/50	105	50	3	4	42,5	Ø5	4	0,006

**art.DDG** JUNCTION SPACERS mod.20/60 for use on BP and FDS.



FOR "BP" AND "FDS"	CODE	ARTICLE	Df	S	Lt	dØ	Di	R	F screw hole size	F number of screws	WEIGHT Kg
BP/FDS 20 22	004A2022	DDG 20 22	50	10	13	25	30	20	M5	5	0,100
BP/FDS 24 25 26	004A242526	DDG 24 25 26	60	12	15	30	35	24	M6	5	0,172
BP/FDS 28 30 32	004A283032	DDG 28 30 32	65	12	15	35	40	26,5	M6	5	0,195
BP/FDS 35 36	004A3536	DDG 35 36	75	12	15	40	50	31,5	M6	6	0,270
BP/FDS 40	004A40	DDG 40	80	12	15	45	55	34	M6	6	0,300
BP/FDS 45 46	004A4546	DDG 45 46	85	12	15	50	60	36,5	M6	8	0,310
BP/FDS 50	004A50	DDG 50	90	12	15	55	65	39	M6	8	0,340
BP/FDS 55	004A55	DDG 55	100	15	18	60	70	42,5	M8	6	0,530
BP/FDS 60	004A60	DDG 60	105	15	18	65	75	45	M8	6	0,560

**art.C200BE/L...** Manifolds suitable for rubber protective cover are available on request for **Dust Cups BP**, for dimensions see table on page 67.