

Hydraulické valce ISO 6020/2 - 160 bar

Séria HT



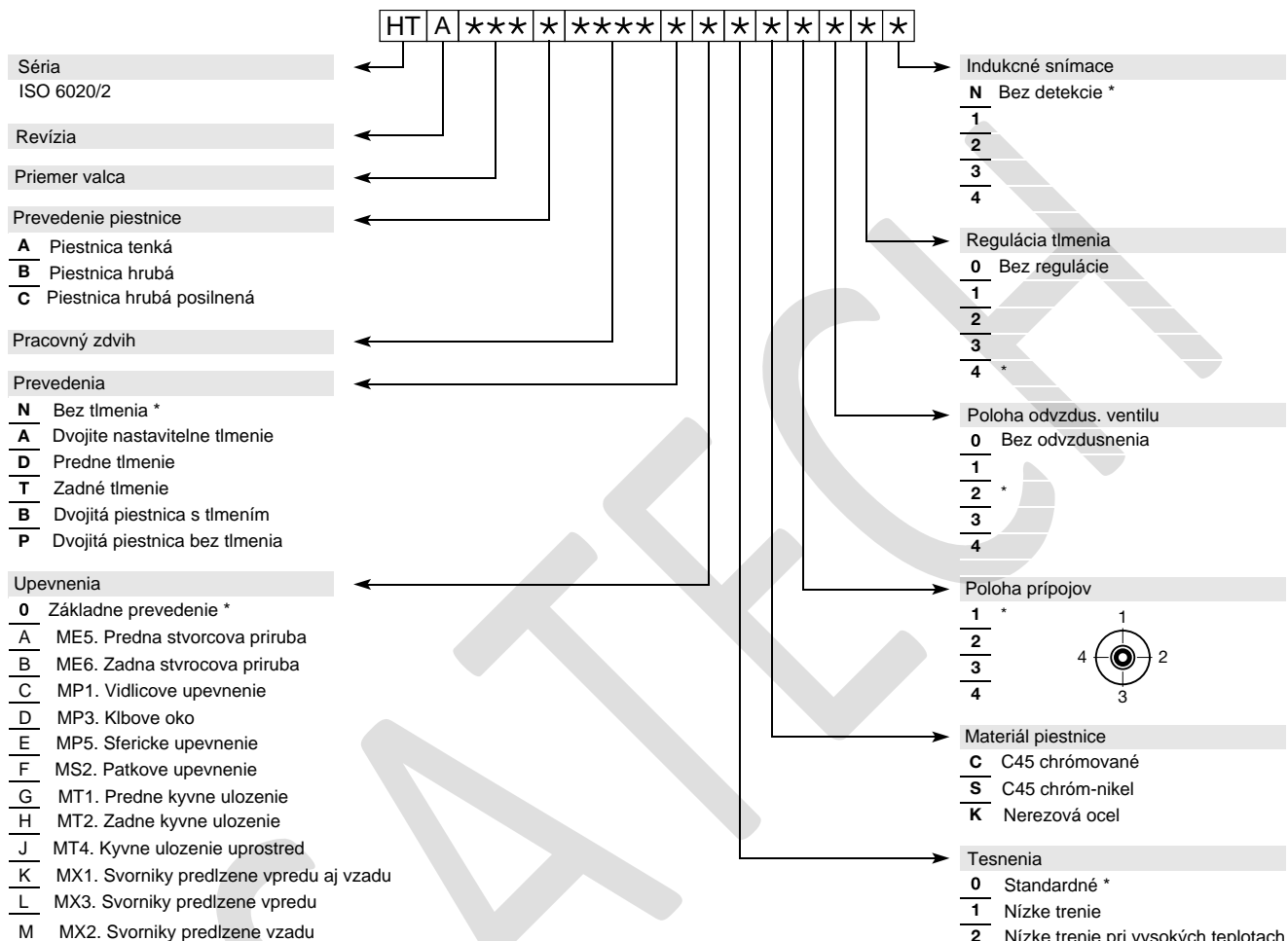
TECHNICKÉ CHARAKTERISTIKY

Norma	ISO 6020/2																			
Typ konštrukcie	So svorníkmi																			
Nominálny tlak	160 bar																			
Skúšobný tlak	240 bar																			
Teplota okolia	-20°C až +80°C																			
	-20°C až +160°C u Vitonu																			
Teplota oleja	-20°C až +80°C																			
	-20°C až +160°C u Vitonu																			
Olej	Minerálny olej, iné typy na požiadanie																			
Priemer valca (mm)	25	32	40	50	63	80	100	125	160	200										
Priemer piestnice (mm)	12	18	14	22	18	28	22	36	28	45	36	56	45	70	56	90	70	110	90	140
Maximálna rýchlosť (m/s) standardne tesnenia	0,5						0,4													
Maximálna rýchlosť (m/s) tesnenia s nízkym trením	1																			

Hydraulické valce ISO 6020/2 - 160 bar

Séria HT

Kodifikácia valcov



Pre zdvihy vacšie ako 1000mm je pouzity distancny kruzok.

Predlzuje dlzku valca nasledovne :

1001-1500: +50mm

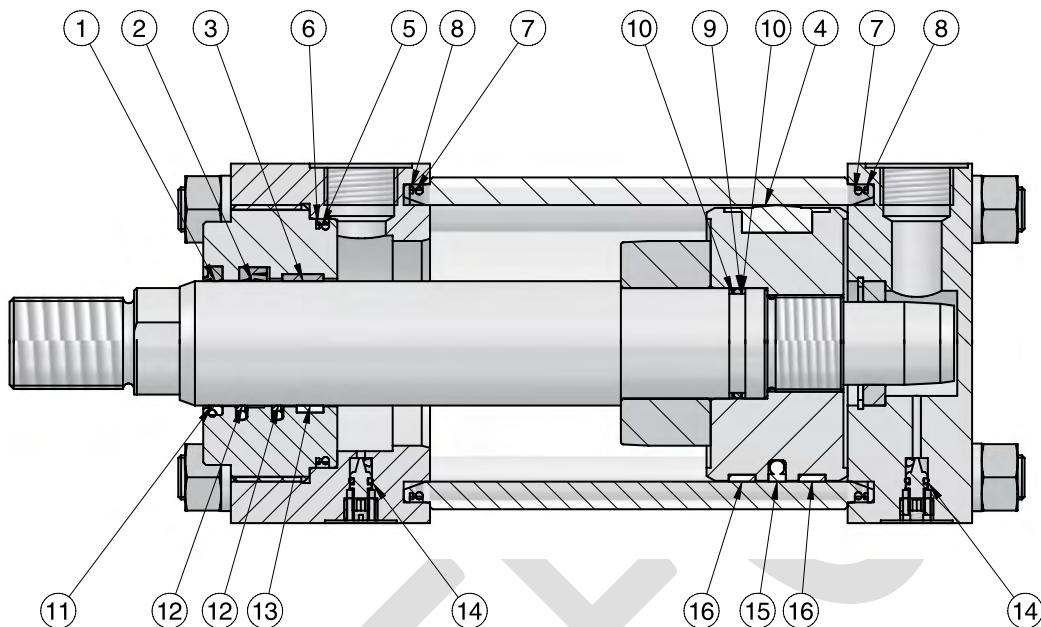
1501-2000: +100mm

2001-2500: +150mm

2501-3000: +200mm

* - predvolená možnosť

Hydraulické valce ISO 6020/2 - 160 bar Séria HT



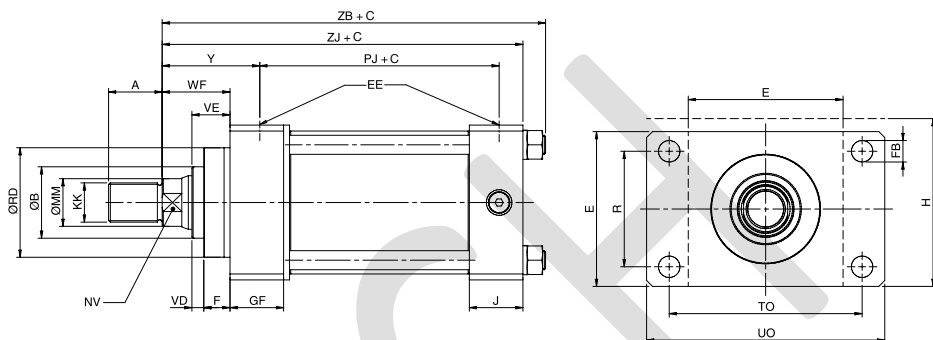
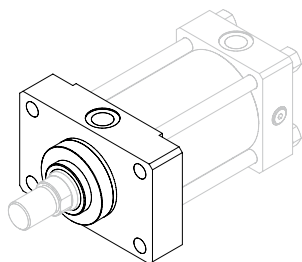
Císlo	Názov
1	Stierací krúžok
2	Tesnenie piestnice
3	Vodiaci krúžok
4	Tesnenie piesta
5	O - kruzok
6	Tesnenie
7	O - kruzok
8	Tesnenie
9	O - kruzok
10	Tesnenie
11	Stierací kruzok s nizkym trenim
12	Tesnenie piestnice s nizkym trenim
13	Vodiaci pas piestnice s nizkym trenim
14	O - kruzok
15	Kruzok piestu s nizkym trenim
16	Vodiaci pas piestnice s nizkym trenim

ISO 6020/2	D valca	D piestnice	Typ tesnenia
	025 = 25 mm	014 = 14 mm	0 = standardné tesnenie
	032 = 32 mm	018 = 18 mm	1 = tesnenie s nizkym trenim
	040 = 40 mm	022 = 22 mm	2 = tesnenie s nizkym f do vysokych teplot
	050 = 50 mm	028 = 28 mm	
	063 = 63 mm	036 = 36 mm	
	080 = 80 mm	045 = 45 mm	
	100 = 100 mm	056 = 56 mm	
	125 = 125 mm	070 = 70 mm	
	160 = 160 mm	090 = 90 mm	
		110 = 110 mm	
		140 = 140 mm	

Hydraulické valce ISO 6020/2 - 160 bar

Séria HT

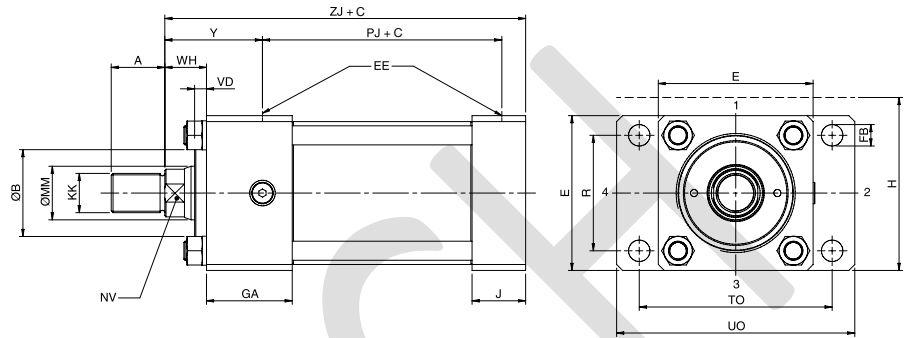
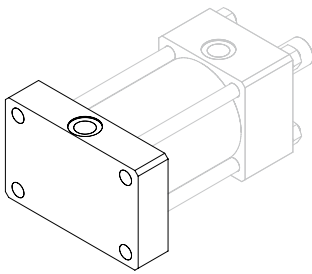
ISO ME5



Ø	ØMM	A	B	E	EE	F	FB	GF	H	J	KK	NV	PJ	R	RD	TO	UO	VD	VE	WF	Y	ZB	ZJ
25	12	14	24								M10x1,25	10											
	18	14	30	40	1/4"G	10	5,5	25	45	25	M10x1,25	15	53	27	38	51	65	6	16	25	50	121	114
32	14	16	26								M14x1,5	12											
	22	16	34	45	1/4"G	10	6,6	25	50	25	M12x1,5	18	56	33	42	58	70	12	22	35	60	136	128
	22	18	30								M16x1,5	15											
40	18	18	30								M14x1,5	15											
	28	18	42	63	3/8"G	10	11	38		38	M14x1,5	22	73	41	62	87	110	12	22	35	62	163	153
	22	22	34								M20x1,5	18											
50	22	22	34								M16x1,5	18											
	36	22	50	75	1/2"G	16	14	38		38	M16x1,5	30	74	52	74	105	130	9	25	41	67	173	159
	28	28	42								M27x2	22			75								
63	28	28	42								M20x1,5	22											
	45	28	60	90	1/2"G	16	14	38		38	M20x1,5	36	80	65	88	117	145	13	29	48	71	182	168
	36	36	50								M33x2	30			82								
80	36	36	50								M27x2	30			82								
	56	36	72	115	3/4"G	20	18	45		45	M27x2	46	93	83	105	149	180	9	29	51	77	209	190
	45	45	60								M42x2	36			92								
100	45	45	60								M33x2	36			92								
	70	45	88	130	3/4"G	22	18	45		45	M33x2	60	101	97	125	162	200	10	32	57	82	222	203
	56	56	72								M48x2	46			105								
125	56	56	72								M42x2	46			105								
	90	56	108	165	1"G	22	22	58		58	M42x2	80	117	126	150	208	250	10	32	57	86	257	232
	70	63	88								M64x3	60			125								
160	70	63	88								M48x2	60			125								
	110	63	133	205	1"G	25	26	58		58	M48x2	100	130	155	170	253	300	7	32	57	86	277	245
	90	85	108								M80x3	80			150								
200	90	85	108								M64x3	80			150								
	140	85	163	245	1 1/4"G	25	33	76		76	M64x3	120	165	190	210	300	360	7	32	57	98	334	299

Hydraulické valce ISO 6020/2 - 160 bar Séria HT

ISO ME6

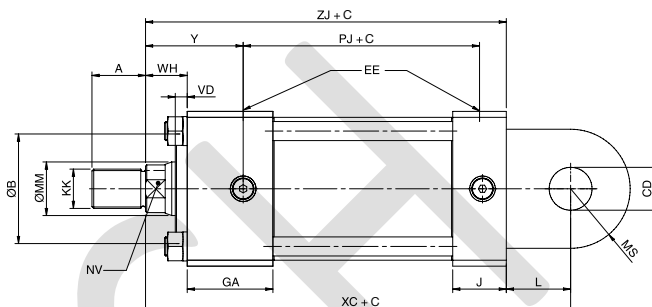
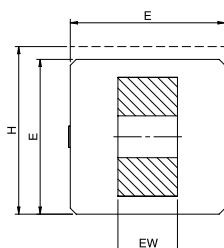
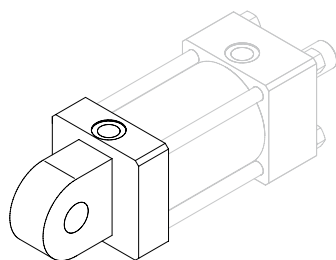


Ø	ØMM	A	B	E	EE	FB	GA	H	J	KK	NV	PJ	R	TO	UO	VD	WH	Y	ZJ
25	12	14	24	40	1/4"G	5,5	50	45	25	M10x1,25	10	53	27	51	65	6	15	50	114
	18	30	M10x1,25							15									
32	14	16	26	45	1/4"G	6,6	50	50	25	M12x1,5	12	56	33	58	70	12	25	60	128
	16	34	M12x1,5							18									
	22		M16x1,5							18									
40	18	18	30	63	3/8"G	11	55	38	38	M14x1,5	15	73	41	87	110	12	25	62	153
	28	42	M14x1,5							22									
	22	34	M20x1,5							22									
50	22	22	34	75	1/2"G	14	61	38	38	M16x1,5	18	74	52	105	130	9	25	67	159
	36	50	M16x1,5							30									
	28	42	M27x2							30									
63	28	28	42	90	1/2"G	14	61	38	38	M20x1,5	22	80	65	117	145	13	32	71	168
	45	60	M20x1,5							36									
	36	50	M33x2							36									
80	36	36	50	115	3/4"G	18	70	45	45	M27x2	30	93	83	149	180	9	31	77	190
	56	72	M27x2							46									
	45	60	M42x2							46									
100	45	45	60	130	3/4"G	18	72	45	45	M33x2	36	101	97	162	200	10	35	82	203
	70	88	M33x2							60									
	56	72	M48x2							60									
125	56	56	72	165	1"G	22	80	58	58	M42x2	46	117	126	208	250	10	35	86	232
	90	108	M42x2							80									
	85	88	M64x3							80									
160	70	63	88	205	1"G	26	83	58	58	M48x2	60	130	155	253	300	7	32	86	245
	110	133	M48x2							100									
	90	108	M80x3							100									
200	90	85	108	245	1 1/4"G	33	101	76	76	M64x3	80	165	190	300	360	7	32	98	299
	140	163	M64x3							80									
	112		M100x3							120									

Hydraulické valce ISO 6020/2 - 160 bar

Séria HT

ISO MP3

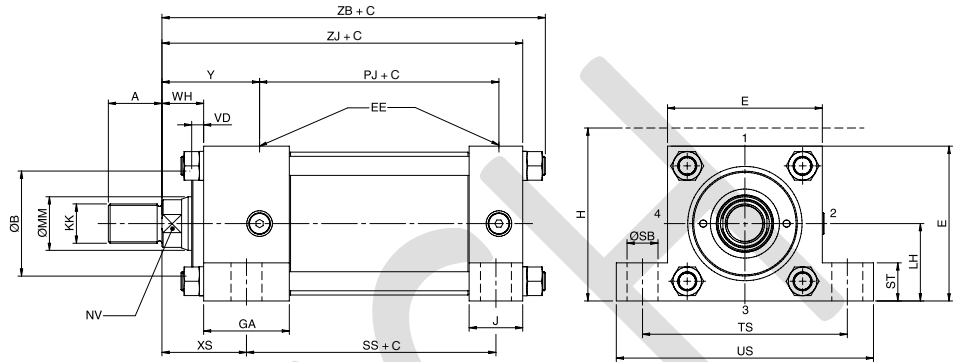
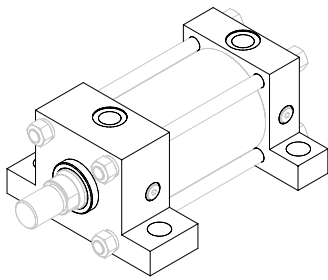


Ø	ØMM	A	B	CD	E	EE	EW	GA	H	J	KK	L	MS	NV	PJ	VD	WH	XC	Y	ZJ
25	12	14	24								M10x1,25		10							
	18	14	30	10	40	1/4"G	12	50	45	25	M10x1,25	13	12	15	53	6	15	127	50	114
32	14	16	26								M14x1,5		12							
	22	16	34	12	45	1/4"G	16	50	50	25	M12x1,5	19	17	18	56	12	25	147	60	128
	22	22	34								M16x1,5		15							
40	18	18	30								M14x1,5		15							
	28	18	42	14	63	3/8"G	20	55		38	M14x1,5	19	17	22	73	12	25	172	62	153
50	22	22	34								M20x1,5		18							
	36	22	50	20	75	1/2"G	30	61		38	M16x1,5	32	29	30	74	9	25	191	67	159
63	28	28	42								M27x2		22							
	45	28	60	20	90	1/2"G	30	61		38	M20x1,5	32	29	36	80	13	32	200	71	168
	45	45	60								M33x2		30							
80	36	36	50								M27x2		30							
	56	36	72	28	115	3/4"G	40	70		45	M27x2	39	34	46	93	9	31	229	77	190
100	45	45	60								M42x2		36							
	70	45	88	36	130	3/4"G	50	72		45	M33x2	54	44	60	101	10	35	257	82	203
	56	63	72								M48x2		46							
125	90	56	108	45	165	1"G	60	80		58	M42x2	57	53	80	117	10	35	289	86	232
	70	85	88								M64x3		60							
160	110	63	133	56	205	1"G	70	83		58	M48x2	63	59	100	130	7	32	308	86	245
	90	95	108								M80x3		80							
200	140	85	163	70	245	1 1/4"G	80	101		76	M64x3	82	78	120	165	7	32	381	98	299
	112	112	163								M100x3		120							

Hydraulické valce ISO 6020/2 - 160 bar

Séria HT

ISO MS2

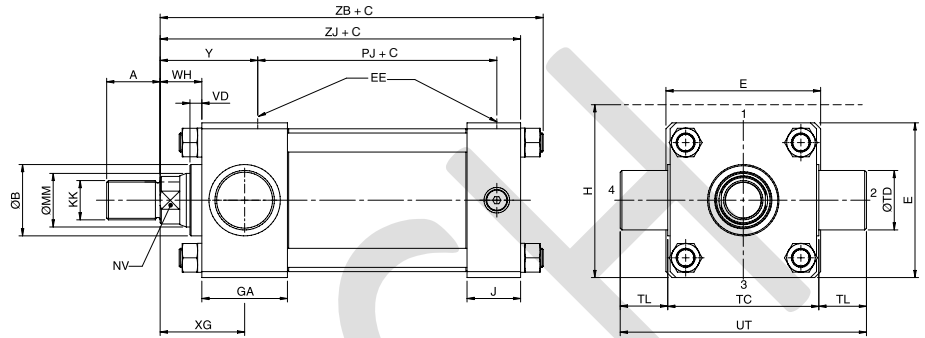
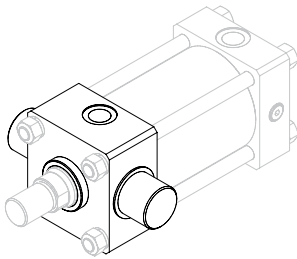


Ø	ØMM	A	B	E	EE	GA	H	J	KK	LH	NV	PJ	SB	SS	ST	TS	US	VD	WH	XS	Y	ZB	ZJ
25	12	14	24	40	1/4"G	50	45	25	M10x1,25	10	19	53	6,6	73	8,5	54	72	6	15	33	50	121	114
	18	30	M10x1,25																				
32	14	16	26	45	1/4"G	50	50	25	M14x1,5	12	18	56	9	73	12,5	63	84	12	25	45	60	136	128
	22	34	M12x1,5																				
	22	34	M16x1,5																				
40	18	18	30	63	3/8"G	55	38	38	M14x1,5	15	22	73	11	98	12,5	83	103	12	25	45	62	163	153
	28	42	M20x1,5																				
	22	34	M16x1,5																				
50	22	22	34	75	1/2"G	61	38	38	M16x1,5	18	30	74	14	92	19	102	127	9	25	54	67	173	159
	36	50	M27x2																				
	28	42	M20x1,5																				
63	28	28	42	90	1/2"G	61	38	38	M20x1,5	22	36	80	18	86	26	124	161	13	32	65	71	182	168
	45	60	M33x2																				
	36	50	M27x2																				
80	36	36	50	115	3/4"G	70	45	45	M27x2	30	46	93	18	105	26	149	186	9	31	68	77	209	190
	56	72	M42x2																				
	45	60	M33x2																				
100	45	45	60	130	3/4"G	72	45	45	M33x2	36	60	101	26	102	32	172	216	10	35	79	82	222	203
	63	88	M48x2																				
	56	72	M42x2																				
125	56	56	72	165	1"G	80	58	58	M42x2	46	80	117	26	131	32	210	254	10	35	79	86	257	232
	90	108	M64x3																				
	85	88	M48x2																				
160	70	63	88	205	1"G	83	58	58	M48x2	60	101	130	33	130	38	260	318	7	32	86	86	277	245
	110	133	M80x3																				
	90	108	M64x3																				
200	90	85	108	245	1 1/4"G	101	76	76	M64x3	80	122	165	39	172	44	311	381	7	32	92	98	334	299
	140	163	M100x3																				

Hydraulické valce ISO 6020/2 - 160 bar

Séria HT

ISO MT1

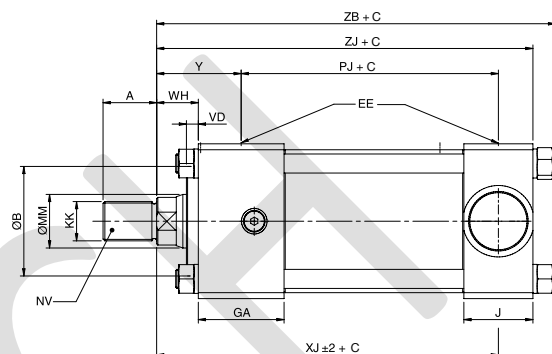
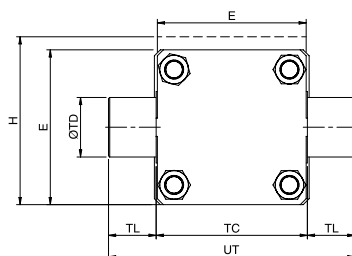
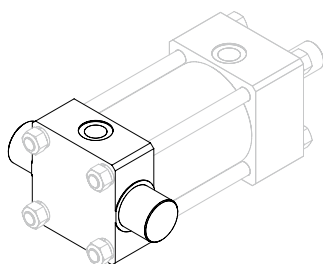


Ø	ØMM	A	B	E	EE	GA	H	J	KK	NV	PJ	TC	TD	TL	UT	VD	WH	XG	Y	ZB	ZJ
25	12	14	24	40	1/4"G	50	45	25	M10x1,25	10	53	38	12	10	58	6	15	44	50	121	114
	18	30	M10x1,25						15												
32	14	16	26	45	1/4"G	50	50	25	M12x1,5	12	56	44	16	12	68	12	25	54	60	136	128
	22	34	M12x1,5						18												
	22	34	M16x1,5						15												
	18	30	M14x1,5						15												
40	18	18	30	63	3/8"G	55	38	38	M14x1,5	15	73	63	20	16	95	12	25	57	62	163	153
	28	42	M14x1,5						22												
	22	34	M20x1,5						18												
50	22	22	34	75	1/2"G	61	38	38	M16x1,5	18	74	76	25	20	116	9	25	64	67	173	159
	36	50	M16x1,5						30												
	28	42	M27x2						22												
63	28	28	42	90	1/2"G	61	38	38	M20x1,5	22	80	89	32	25	139	13	32	70	71	182	168
	45	60	M33x2						36												
	36	50	M27x2						30												
80	36	36	50	115	3/4"G	70	45	45	M27x2	30	93	114	40	32	178	9	31	76	77	209	190
	56	72	M42x2						46												
	45	60	M33x2						36												
100	45	45	60	130	3/4"G	72	45	45	M33x2	36	101	127	50	40	207	10	35	71	82	222	203
	70	88	M48x2						60												
	56	72	M42x2						46												
125	56	56	72	165	1"G	80	58	58	M42x2	46	117	165	63	50	265	10	35	75	86	257	232
	90	108	M64x3						80												
	70	88	M48x2						60												
160	70	63	88	205	1"G	83	58	58	M48x2	60	130	203	80	63	329	7	32	75	86	277	245
	110	133	M80x3						100												
	90	108	M64x3						80												
200	90	85	108	245	1 1/4"G	101	76	76	M64x3	80	165	241	100	80	401	7	32	85	98	334	299
	140	163	M100x3						120												

Hydraulické valce ISO 6020/2 - 160 bar

Séria HT

ISO MT2

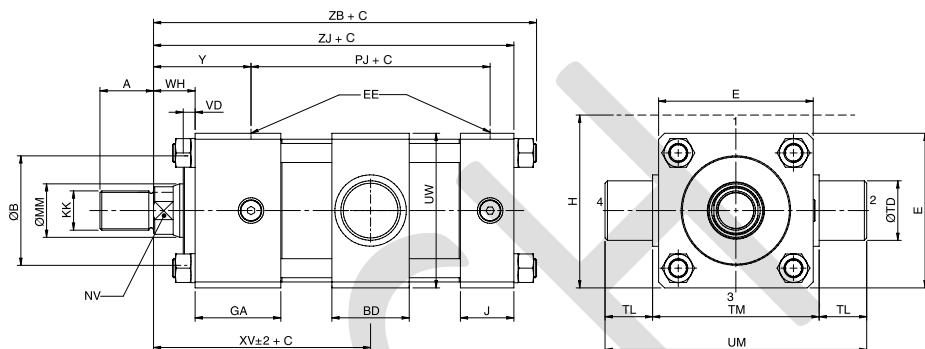
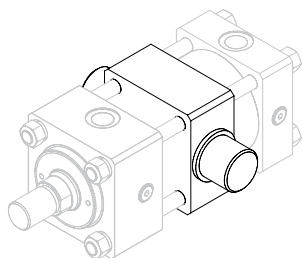


Ø	ØMM	A	B	E	EE	GA	H	J	KK	NV	PJ	TC	TD	TL	UT	VD	WH	XJ	Y	ZB	ZJ
25	12	14	24	40	1/4"G	50	45	25	M10x1,25	10	53	38	12	10	58	6	15	101	50	121	114
	18	30	M10x1,25						15												
32	14	16	26	45	1/4"G	50	50	25	M12x1,5	12	56	44	16	12	68	12	25	115	60	136	128
	16	34	M12x1,5						18												
	22	22	M16x1,5						18												
40	18	18	30	63	3/8"G	55	38	38	M14x1,5	15	73	63	20	16	95	12	25	134	62	163	153
	18	42	M14x1,5						22												
	22	22	M20x1,5						18												
50	22	22	34	75	1/2"G	61	38	38	M16x1,5	18	74	76	25	20	116	9	25	140	67	173	159
	36	50	M16x1,5						30												
	28	28	M27x2						22												
63	28	28	42	90	1/2"G	61	38	38	M20x1,5	22	80	89	32	25	139	13	32	149	71	182	168
	45	60	M20x1,5						36												
	45	45	M33x2						30												
80	36	36	50	115	3/4"G	70	45	45	M27x2	30	93	114	40	32	178	9	31	168	77	209	190
	56	72	M27x2						46												
	45	45	M42x2						36												
100	45	45	60	130	3/4"G	72	45	45	M33x2	36	101	127	50	40	207	10	35	187	82	222	203
	70	88	M33x2						60												
	63	63	M48x2						46												
125	56	56	72	165	1"G	80	58	58	M42x2	46	117	165	63	50	265	10	35	209	86	257	232
	90	108	M42x2						80												
	70	88	M64x3						60												
160	70	63	88	205	1"G	83	58	58	M48x2	60	130	203	80	63	329	7	32	230	86	277	245
	110	133	M48x2						100												
	90	95	M80x3						80												
200	90	85	108	245	1 1/4"G	101	76	76	M64x3	80	165	241	100	80	401	7	32	276	98	334	299
	140	163	M64x3						120												
	112	112	M100x3																		

Hydraulické valce ISO 6020/2 - 160 bar

Séria HT

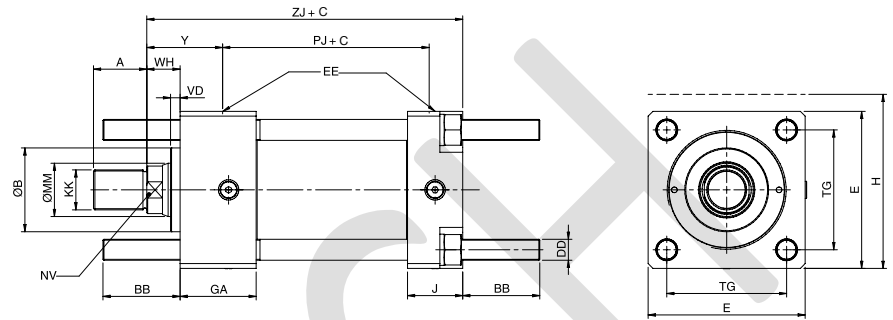
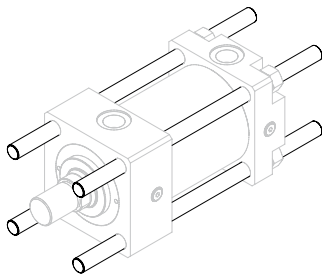
ISO MT4



Ø	ØMM	A	B	BD	E	EE	GA	H	J	KK	NV	PJ	TD	TL	TM	UM	UW	VD	WH	XV _(min)	Y	ZB	ZJ
25	12	14	24	20	40	1/4"G	50	45	25	M10x1,25	10	53	12	10	48	68	45	6	15	77	50	121	114
	18	14	30							M10x1,25	15												
32	14	16	26	25	45	1/4"G	50	50	25	M12x1,5	12	56	16	12	55	79	50	12	25	90	60	136	128
	22	16	34							M12x1,5	18												
40	18	18	30	30	63	3/8"G	55	38	38	M14x1,5	15	73	20	16	76	108	70	12	25	97	62	163	153
	28	18	42							M14x1,5	22												
50	22	22	34	40	75	1/2"G	61	38	38	M16x1,5	18	74	25	20	89	129	83	9	25	108	67	173	159
	36	22	50							M16x1,5	30												
63	28	28	42	48	90	1/2"G	61	38	38	M20x1,5	22	80	32	25	100	150	94	13	32	119	71	182	168
	45	28	60							M20x1,5	36												
80	36	36	50	55	115	3/4"G	70	45	45	M27x2	30	93	40	32	127	191	118	9	31	131	77	209	190
	56	36	72							M27x2	46												
100	45	45	60	65	130	3/4"G	72	45	45	M33x2	36	101	50	40	140	220	128	10	35	142	82	222	203
	70	45	88							M33x2	60												
125	56	56	72	85	165	1"G	80	58	58	M42x2	46	117	63	50	178	278	168	10	35	160	86	257	232
	90	56	108							M42x2	80												
160	70	63	88	105	205	1"G	83	58	58	M48x2	60	130	80	63	215	341	205	7	32	170	86	277	245
	110	63	133							M48x2	100												
200	90	85	108	125	245	1 1/4"G	101	76	76	M64x3	80	165	100	80	279	439	250	7	32	198	98	334	299
	140	85	163							M64x3	120												

Hydraulické valce ISO 6020/2 - 160 bar Séria HT

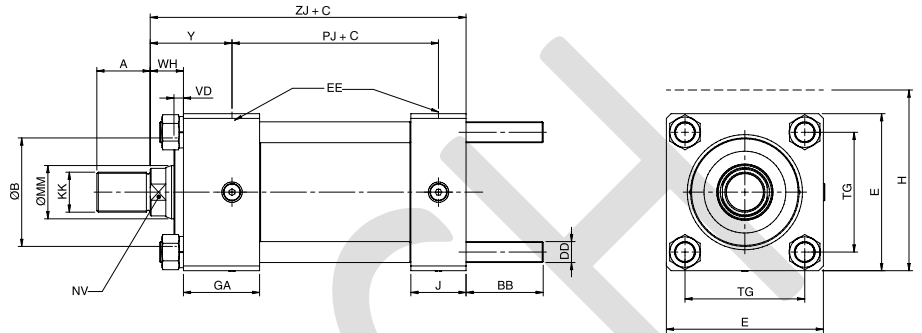
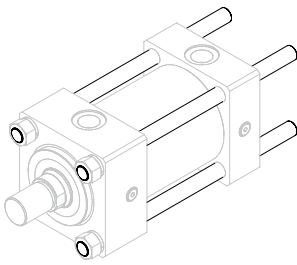
ISO MX1



Ø	ØMM	A	B	BB	DD	E	EE	GA	H	J	KK	NV	PJ	TG	VD	WH	Y	ZJ
25	12	14	24	19	M5x0,8	40	1/4"G	50	45	25	M10x1,25	10	53	28,3	6	15	50	114
	18	30	M10x1,25								15							
32	14	16	26	24	M6x1	45	1/4"G	50	50	25	M14x1,5	12	56	33,2	12	25	60	128
	22	34	M12x1,5								18							
	22	34	M16x1,5								18							
40	18	18	30	35	M8x1	63	3/8"G	55	38	38	M14x1,5	15	73	41,7	12	25	62	153
	28	42	M14x1,5								22							
	22	34	M20x1,5								22							
50	22	22	34	46	M12x1,25	75	1/2"G	61	38	38	M16x1,5	18	74	52,3	9	25	67	159
	36	50	M16x1,5								30							
	28	42	M27x2								22							
63	28	28	42	46	M12x1,25	90	1/2"G	61	38	38	M20x1,5	22	80	64,3	13	32	71	168
	45	60	M33x2								36							
	36	50	M27x2								30							
80	36	36	50	59	M16x1,5	115	3/4"G	70	45	45	M27x2	30	93	82,7	9	31	77	190
	56	72	M42x2								46							
	45	60	M33x2								36							
100	70	45	88	59	M16x1,5	130	3/4"G	72	45	45	M33x2	36	101	96,9	10	35	82	203
	63	88	M48x2								46							
	56	72	M42x2								46							
125	90	56	108	81	M22x1,5	165	1"G	80	58	58	M42x2	46	117	125,9	10	35	86	232
	85	108	M64x3								60							
	70	88	M48x2								60							
160	110	63	133	92	M27x2	205	1"G	83	58	58	M48x2	60	130	154,9	7	32	86	245
	95	108	M80x3								80							
	90	108	M64x3								80							
200	85	85	108	115	M30x2	245	1 1/4"G	101	76	76	M64x3	80	165	190,2	7	32	98	299
	140	163	M100x3								120							

Hydraulické valce ISO 6020/2 - 160 bar Séria HT

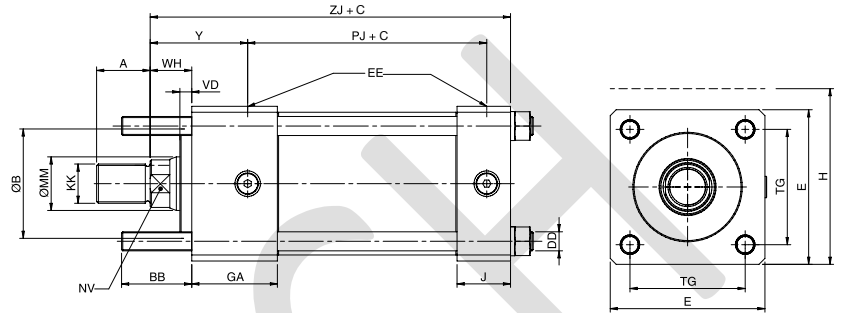
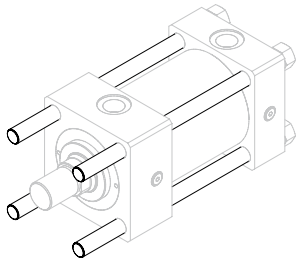
ISO MX2



Ø	ØMM	A	B	BB	DD	E	EE	GA	H	J	KK	NV	PJ	TG	VD	WH	Y	ZJ
25	12	14	24								M10x1,25	10						
	18	14	30	19	M5x0,8	40	1/4"G	50	45	25	M10x1,25	15	53	28,3	6	15	50	114
32	14	16	26								M14x1,5	12						
	22	16	34	24	M6x1	45	1/4"G	50	50	25	M12x1,5	18	56	33,2	12	25	60	128
40	18	18	30								M14x1,5	15						
	28	18	42	35	M8x1	63	3/8"G	55		38	M14x1,5	22	73	41,7	12	25	62	153
50	22	22	34								M20x1,5	18						
	36	22	50	46	M12x1,25	75	1/2"G	61		38	M16x1,5	30	74	52,3	9	25	67	159
63	28	28	42								M20x1,5	22						
	45	28	60	46	M12x1,25	90	1/2"G	61		38	M20x1,5	36	80	64,3	13	32	71	168
80	36	36	50								M33x2	30						
	56	36	72	59	M16x1,5	115	3/4"G	70		45	M27x2	46	93	82,7	9	31	77	190
100	45	45	60								M33x2	36						
	70	45	88	59	M16x1,5	130	3/4"G	72		45	M33x2	60	101	96,9	10	35	82	203
125	56	56	72								M48x2	46						
	90	56	108	81	M22x1,5	165	1"G	80		58	M42x2	80	117	125,9	10	35	86	232
160	70	63	88								M64x3	60						
	110	63	133	92	M27x2	205	1"G	83		58	M48x2	100	130	154,9	7	32	86	245
200	90	85	108								M80x3	80						
	140	85	163	115	M30x2	245	1 1/4"G	101		76	M64x3	120	165	190,2	7	32	98	299

Hydraulické valce ISO 6020/2 - 160 bar Séria HT

ISO MX3

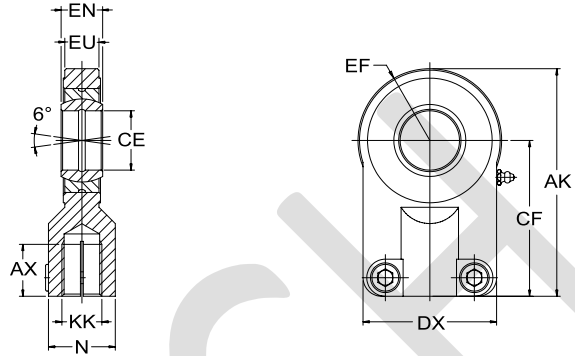


Ø	ØMM	A	B	BB	DD	E	EE	GA	H	J	KK	NV	PJ	TG	VD	WH	Y	ZJ
25	12	14	24	19	M5x0,8	40	1/4"G	50	45	25	M10x1,25	10	53	28,3	6	15	50	114
	18	30	M10x1,25															
32	14	16	26	24	M6x1	45	1/4"G	50	50	25	M12x1,5	12	56	33,2	12	25	60	128
	16	34	M12x1,5															
	22	M16x1,5																
40	18	18	30	35	M8x1	63	3/8"G	55	38	38	M14x1,5	15	73	41,7	12	25	62	153
	28	42	M14x1,5															
	22	34	M20x1,5															
50	22	22	34	46	M12x1,25	75	1/2"G	61	38	38	M16x1,5	18	74	52,3	9	25	67	159
	36	50	M16x1,5															
	28	42	M27x2															
63	28	28	42	46	M12x1,25	90	1/2"G	61	38	38	M20x1,5	22	80	64,3	13	32	71	168
	45	60	M33x2															
	36	50	M27x2															
80	36	36	50	59	M16x1,5	115	3/4"G	70	45	45	M27x2	30	93	82,7	9	31	77	190
	56	72	M42x2															
	45	60	M33x2															
100	45	45	60	59	M16x1,5	130	3/4"G	72	45	45	M33x2	36	101	96,9	10	35	82	203
	70	88	M48x2															
	56	72	M42x2															
125	56	56	72	81	M22x1,5	165	1"G	80	58	58	M42x2	46	117	125,9	10	35	86	232
	90	108	M64x3															
	85	88	M48x2															
160	70	63	88	92	M27x2	205	1"G	83	58	58	M48x2	60	130	154,9	7	32	86	245
	110	133	M80x3															
	95	108	M64x3															
200	90	85	108	115	M30x2	245	1 1/4"G	101	76	76	M64x3	80	165	190,2	7	32	98	299
	140	163	M100x3															
	85	112																

Hydraulické valce ISO 6020/2 - 160 bar

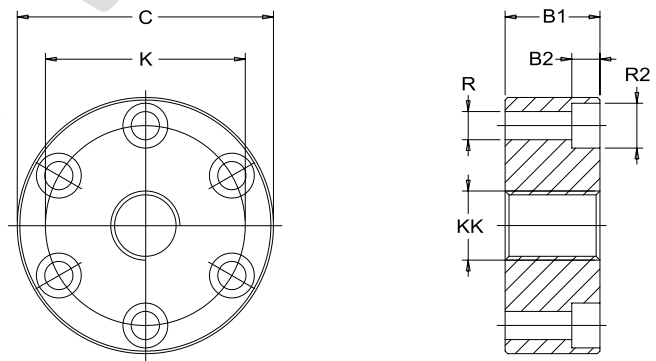
Séria HT

ISO 8133



D	KK (metric)	EN	EU	CE $\varnothing^{-0}_{-0,008}$	EF max.	N max.	DX	CF ^{js13}	AK	AX min.	P/N
14	M12x1,25	14 ⁰ _{-0,12}	11	16 ⁰ _{-0,008}	21	21	45	48	69	17	HRT014AH
18	M14x1,5	16 ⁰ _{-0,12}	13	20 ⁰ _{-0,010}	25	25	55	58	83	19	HRT018AH
22	M16x1,5	20 ⁰ _{-0,12}	17	25 ⁰ _{-0,010}	31	30	62	68	99	23	HRT022AH
28	M20x1,5	22 ⁰ _{-0,12}	19	30 ⁰ _{-0,010}	38	36	80	85	123	29	HRT028AH
36	M27x2	28 ⁰ _{-0,12}	23	40 ⁰ _{-0,012}	48	45	90	105	153	37	HRT036AH
45	M33x2	35 ⁰ _{-0,15}	30	50 ⁰ _{-0,012}	58	55	105	130	188	46	HRT045AH
56	M42x2	44 ⁰ _{-0,15}	38	60 ⁰ _{-0,015}	75	68	134	150	225	57	HRT056AH
70	M48x2	55 ⁰ _{-0,15}	47	80 ⁰ _{-0,015}	97,5	78	156	185	282,2	64	HRT070AH
90	M64x3	70 ⁰ _{-0,20}	57	100 ⁰ _{-0,020}	117,5	100	190	240	357,5	86	HRT090AH

ISO 8132

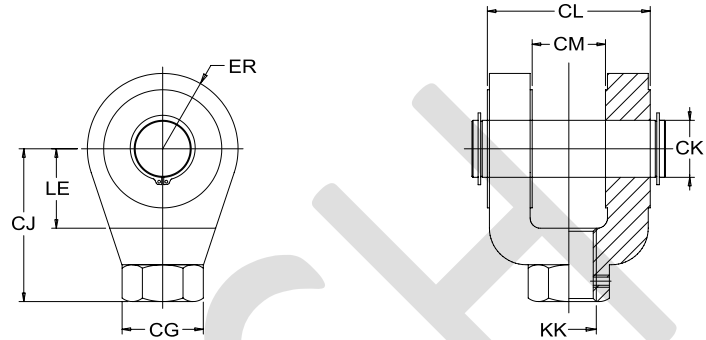


D	KK (metric)	B1	B2	C \varnothing	K \varnothing	R x N° \varnothing Q.ty	R2	P/N
14	M12x1,25	17	6,8	56	40	6,6 4	11	HRT014AA
18	M14x1,5	19	9	63	45	9 4	14,5	HRT018AA
22	M16x1,5	23	9	72	54	9 6	14,5	HRT022AA
28	M20x1,5	29	9	82	63	9 6	14,5	HRT028AA
36	M27x2	37	11	100	78	11 6	17,5	HRT036AA
45	M33x2	46	13	120	95	13,5 8	20	HRT045AA
56	M42x2	57	17,5	150	120	17,5 8	26	HRT056AA
70	M48x2	64	21,5	190	150	22 8	33	HRT070AA
90	M64x3	86	25	230	180	26 8	40	HRT090AA

Hydraulické valce ISO 6020/2 - 160 bar

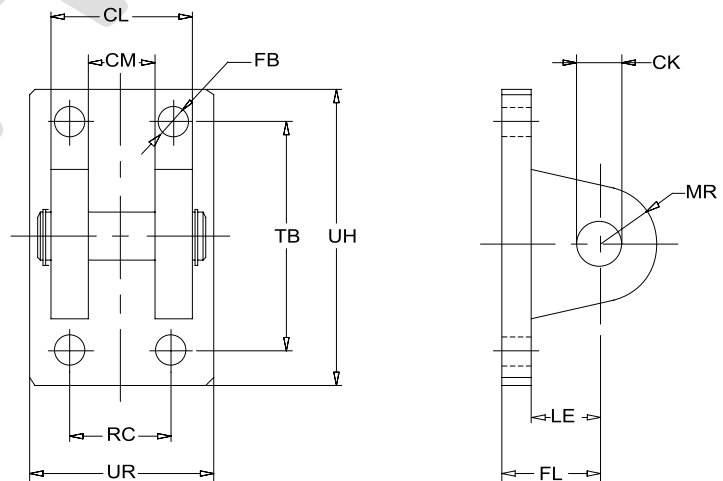
Séria HT

ISO 8133



D	KK (metric)	CK ^{H9} Ø	CL _{max.}	CM ^{H12}	CJ ^{js13}	LE _{min.}	ER _{max.}	CG	P/N
14	M12x1,25	12	32	16	36	19	17	21	HRT014AG
18	M14x1,5	14	40	20	38	19	17	21	HRT018AG
22	M16x1,5	20	60	30	54	32	29	32	HRT022AG
28	M20x1,5	20	60	30	60	32	29	32	HRT028AG
36	M27x2	28	80	40	75	39	34	40	HRT036AG
45	M33x2	36	100	50	99	54	50	56	HRT045AG
56	M42x2	45	120	60	113	57	53	56	HRT056AG
70	M48x2	56	140	70	126	63	59	75	HRT070AG
90	M64x3	70	160	80	168	83	78	95	HRT090AG
110	M80x3	70	160	80	168	83	78	95	HRT110AG
140	M100x3	100	230	100	250	90	95	160	HRT140AG

ISO 8132

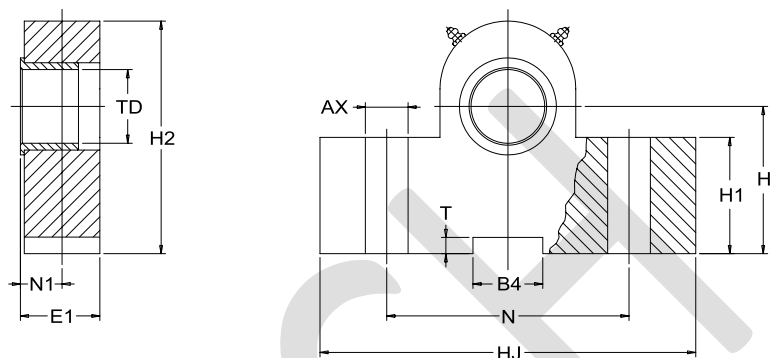


CK ^{H9} Ø	CM ^{A16}	CL ^{H13}	FL ^{js14}	LE	FB Ø	TB ^{js14}	UH	RC ^{js14}	UR	MR	P/N
12	12	28	34	22	9	50	70	20	40	12	HRT012AC
16	16	36	40	27	11	65	90	26	50	16	HRT016AC
20	20	45	45	30	11	75	98	32	58	20	HRT020AC
25	25	56	55	37	13,5	85	113	40	70	25	HRT025AC
32	32	70	65	43	17,5	110	143	50	85	32	HRT032AC
40	40	90	76	52	22	130	170	65	108	40	HRT040AC
50	50	110	95	65	26	170	220	80	130	50	HRT050AC
63	63	140	112	75	33	210	270	100	160	63	HRT063AC
80	80	170	140	95	39	250	320	125	210	80	HRT080AC

Hydraulické valce ISO 6020/2 - 160 bar

Séria HT

ISO 8132



D	AX ^{H13} Ø	H ^{A16}	H1	H2 _{max.}	TD ^{H7}	HJ	E1	N	N1	B4 ^{N9}	T ^{+0,3 +0}	P/N
25	9	34	25	49	12	63	17	40	8	10	3,3	HRT025AF
32	11	40	30	59	16	80	21	50	10	16	4,3	HRT032AF
40	11	45	38	69	20	90	21	60	10	16	4,3	HRT040AF
50	13,5	55	45	80	25	110	26	80	12	25	5,4	HRT050AF
63	17,5	65	52	100	32	150	33	110	15	25	5,4	HRT063AF
80	22	76	60	120	40	170	41	125	16	36	8,4	HRT080AF
100	26	95	75	140	50	210	51	160	20	36	8,4	HRT100AF
125	33	112	85	177	63	265	61	200	25	50	11,4	HRT125AF
160	39	140	112	220	80	325	81	250	31	50	11,4	HRT160AF