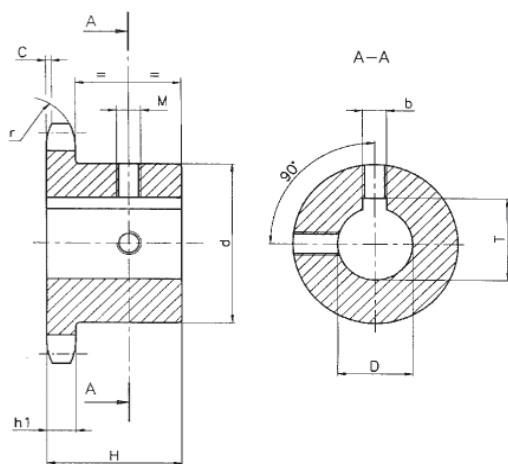
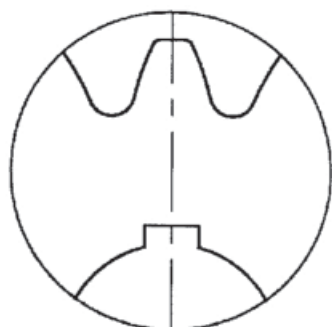


## Upravené reťazové kolesá

Všetky reťazové kolesá majú indukčne kalené zuby na tvrdosť 45/53HRC

- tolerancia vnútorného otvoru H7
- rozmer perodrážky podľa normy UNI
- os perodrážky je v osi zuba kolesa /vid' obrázok/



Rozmery [mm]				M
D (H7)	B (H9)	T [mm]		
10	4	D + 1,8	(+0,1/0)	M3
11	4	D + 1,8	(+0,1/0)	M3
12	4	D + 1,8	(+0,1/0)	M3
14	5	D + 2,3	(+0,1/0)	M4
16	5	D + 2,3	(+0,1/0)	M4
18	6	D + 2,8	(+0,1/0)	M5
19	6	D + 2,8	(+0,1/0)	M5
20	6	D + 2,8	(+0,1/0)	M5
22	6	D + 2,8	(+0,1/0)	M5
24	8	D + 3,3	(+0,2/0)	M6
25	8	D + 3,3	(+0,2/0)	M6
28	8	D + 3,3	(+0,2/0)	M6
30	8	D + 3,3	(+0,2/0)	M6
32	10	D + 3,3	(+0,2/0)	M8
35	10	D + 3,3	(+0,2/0)	M8
38	10	D + 3,3	(+0,2/0)	M8
40	12	D + 3,3	(+0,2/0)	M10
42	12	D + 3,3	(+0,2/0)	M10
45	14	D + 3,8	(+0,2/0)	M12
48	14	D + 3,8	(+0,2/0)	M12
50	14	D + 3,8	(+0,2/0)	M12
60	18	D + 4,4	(+0,2/0)	M12
65	18	D + 4,4	(+0,2/0)	M12
70	20	D + 4,9	(+0,2/0)	M12

# REŤAZOVÉ KOLESÁ UPRAVENÉ

# RKS

Pre valčekovú reťaz 06B-1

Reťazové kolesá s nábojom 9,525 x 5,72 mm

3/8" x 7/32"

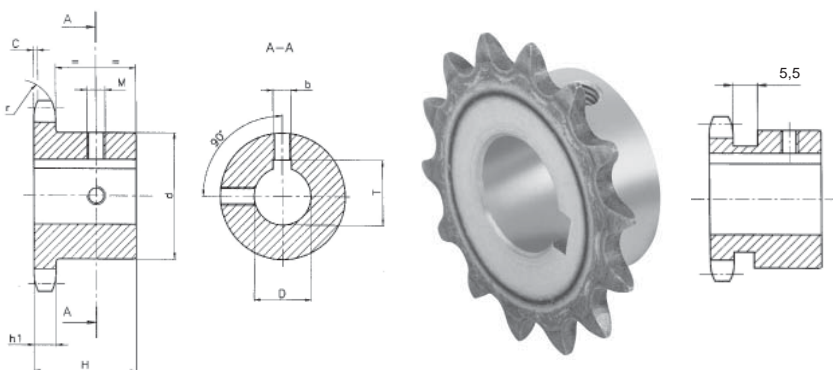
REŤAZ

Rozostup	p	9,525 mm
Vnútna šírka	W	5,72 mm
Priemer valčeka	D	6,35 mm

ISO

REŤAZOVÉ KOLESO

Polomer	r	10,0 mm
Šírka zrazenia	C	1,0 mm
Šírka zuba	h <sub>1</sub>	5,3 mm



**Materiál: oceľ C 43 (UNI 7847)**

Označenie	Počet z	Rozmery [mm]		
		D	H	d
05SA010	10	10	22	24
05SA110		11		26
05SA210		12		29
05SA410		14		29
05SA011	11	10	25	24
05SA211		12		26
05SA411		14		29*
05SA611		16		31*
05SA012	12	10	25	25
05SA212		12		26
05SA412		14		29
05SA612		16		31*
05SA013	13	10	25	28
05SA213		12		29
05SA413		14		31
05SA613		16		35*
05SA813	14	18	25	35*
05SA214		12		31
05SA414		14		35
05SA614		16		35
05SA814	15	18	25	35
05SA914		19		36
05SA215		12		38
05SA415		14		42*
05SA615	16	16	28	34
05SA815		18		35
05SA915		19		36
05SB015		20		38
05SB215	17	22	28	42*
05SB415		24		37
05SB515		25		37
05SA216		12		37
05SA416	18	14	28	37
05SA616		16		37
05SA816		18		37
05SA916		19		37
05SB016	19	20	28	37
05SB216		22		37
05SB416		24		37
05SB516		25		37

Označenie	Počet z	Rozmery [mm]		
		D	H	d
05SB216	16	22	28	37
05SB416		24		42
05SB516		25		42
05SA217		12		40
05SA417	17	14	28	40
05SA617		16		40
05SA817		18		40
05SA917		19		40
05SB017	18	20	28	40
05SB217		22		40
05SB417		24		40
05SB517		25		40
05SA218	19	12	28	43
05SA418		14		43
05SA618		16		43
05SA818		18		43
05SA918	20	19	28	43
05SB018		20		43
05SB218		22		43
05SB418		24		43
05SB518	21	25	28	43
05SA219		12		45
05SA419		14		45
05SA619		16		45
05SA819	22	18	28	45
05SA919		19		45
05SB019		20		45
05SB219		22		45
05SB419	23	24	28	45
05SB519		25		45
05SA220		12		46
05SA420		14		46
05SA620	24	16	28	46
05SA820		18		46
05SA920		19		46
05SB020		20		46
05SB220	25	22	28	46
05SB420		24		46
05SB520		25		46
05SA621		16		46

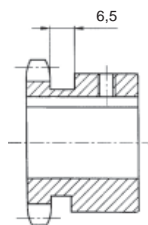
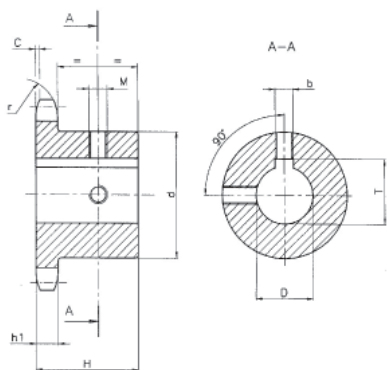
Označenie	Počet z	Rozmery [mm]		
		D	H	d
05SB420	20	24	28	46
05SB520		25		46
05SA621		16		46
05SA821		18		46
05SA921	21	19	28	48
05SB021		20		48
05SB221		22		48
05SB421		24		48
05SB521	22	25	28	48
05SA622		16		48
05SA822		18		48
05SA922		19		48
05SB022	23	20	28	50
05SB222		22		50
05SB422		24		50
05SB522		25		50
05SA623	24	16	28	50
05SA823		18		50
05SA923		19		50
05SB023		20		50
05SB223	25	22	28	52
05SB423		24		52
05SB523		25		52
05SA624		16		52
05SA824	26	18	28	54
05SA924		19		54
05SB024		20		54
05SB224		22		54
05SB424	27	24	28	54
05SB524		25		54
05SA625		16		54
05SA825		18		54
05SA925	28	19	28	57
05SB025		20		57
05SB225		22		57
05SB425		24		57
05SB525	29	25	28	57
05SA626		16		57
05SA826		18		57
05SA926		19		57

# REŤAZOVÉ KOLESÁ UPRAVENÉ

# RKS

Pre valčekovú reťaz 08B-1

Reťazové kolesá s nábojom 12,7 x 7,75 mm



1/2" x 5/16"

REŤAZ	ISO	
Rozostup	p	12,7 mm
Vnútorňa šírka	W	7,8 mm
Priemer valčeka	D	8,5 mm
REŤAZOVÉ KOLESO		
Polomer	r	13,0 mm
Šírka zrazenia	C	1,3 mm
Šírka zuba	h <sub>1</sub>	7,2 mm

Materiál: ocel C 43 (UNI 7847)

Označenie	Počet z	Rozmery [mm]				
		D	H	d		
09SA210	10	12	25	26		
09SA410		14		29		
09SA610		16		31		
09SA211	11	12	25	29		
09SA411		14		31		
09SA611		16		34		
09SA811		18		35		
09SA911	19	35				
09SA212	12	12	28	33		
09SA412		14				
09SA612		16				
09SA812		18		35		
09SA912		19				
09SB012		20				
09SB212		22		38		
09SB412		24		41*		
09SB512		25		42*		
09SA213		13		12	28	37
09SA413				14		
09SA613				16		
09SA813	18		22			
09SA913	19					
09SB013	20					
09SB213	22		45*			
09SB413	24					
09SB513	25					
09SB813	28					
09SA214	14		12	28		41
09SA414			14			
09SA614			16			
09SA814		18				
09SA914		19				
09SB014		20				
09SB214		22				
09SB414		24				
09SB514		25				
09SB814		28	45			
09SA215	14	12	28	45		
09SA415		14				
09SA615		16				

Označenie	Počet z	Rozmery [mm]				
		D	H	d		
09SA815	15	18	28	45		
09SB015		20				
09SB215		22				
09SB415		24		47		
09SB515		25				
09SB815		28				
09SC015		30		49		
09SC215		32				
09SA616		16		16	28	50
09SA816				18		
09SA916	19					
09SB016	20					
09SB216	22		53			
09SB416	24					
09SB516	25					
09SB816	28					
09SC016	30					
09SC216	32					
09SA617	17		16	28		52
09SA817		18				
09SA917		19				
09SB017		20				
09SB217		22	56			
09SB417		24				
09SB517		25				
09SB817		28				
09SC017		30				
09SC217		32				
09SA618	18	16	28	56		
09SA818		18				
09SA918		19				
09SB018		20				
09SB218		22				
09SB418		24				
09SB518		25				
09SB818		28				
09SC018		30				
09SC218		32				
09SC518	35					

Označenie	Počet z	Rozmery [mm]		
		D	H	d
09SC818	18	38	28	56
09SA619	19	16	28	60
09SA819		18		
09SA919		19		
09SB019		20		
09SB219		22		64
09SB419		24		
09SB519		25		
09SB819		28		
09SC019		30		
09SC219		32		
09SC519	35			
09SC819	38			
09SA620	20	16	28	64
09SA820		18		
09SA920		19		
09SB020		20		
09SB220		22		68
09SB420		24		
09SB520		25		
09SB820		28		
09SC020		30		
09SC220		32		
09SC520	35			
09SC820	38			
09SA621	21	16	28	68
09SA821		18		
09SA921		19		
09SB021		20		
09SB221		22		70
09SB421		24		
09SB521		25		
09SB821		28		
09SC021		30		
09SC221		32		
09SC521	35			
09SC821	38			
09SA622	22	16	28	70
09SA822		18		
09SA922		19		

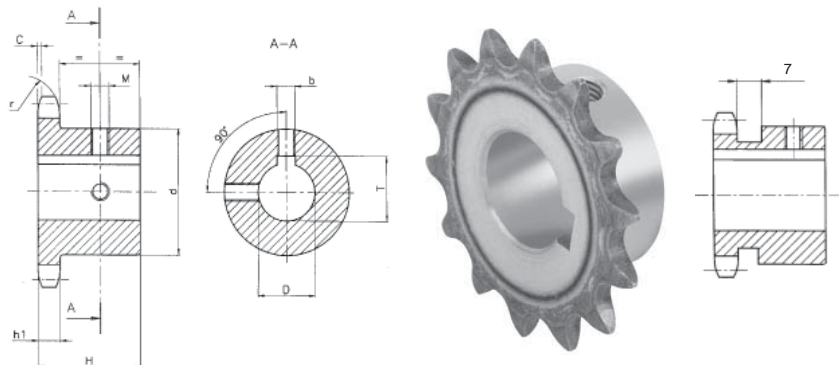
Označenie	Počet z	Rozmery [mm]		
		D	H	d
09SB022	22	20	28	70
09SB222		22		
09SB422		24		
09SB522		25		
09SB822		28		70
09SC022		30		
09SC222		32		
09SC522		35		
09SC822		38		
09SA923		23		19
09SB023	20			
09SB223	22			
09SB423	24			
09SB523	25		70	
09SB823	28			
09SC023	30			
09SC223	32			
09SC523	35			
09SC823	38			
09SA924	24	19	28	70
09SB024		20		
09SB224		22		
09SB424		24		
09SB524		25		70
09SB824		28		
09SC024		30		
09SC224		32		
09SC524		35		
09SC824		38		
09SA925	25	19	28	70
09SB025		20		
09SB225		22		
09SB425		24		
09SB525		25		70
09SB825		28		
09SC025		30		
09SC225		32		
09SC525		35		
09SC825		38		

# REŤAZOVÉ KOLESÁ UPRAVENÉ

RKS

Pre valčekovú reťaz 10B-1

Reťazové kolesá s nábojom 15,875 x 9,65 mm



5/8" x 3/8"

REŤAZ	ISO	
Rozostup	p	15,875 mm
Vnútna šírka	W	9,7 mm
Priemer valčeka	D	10,0 mm
REŤAZOVÉ KOLESO		
Polomer	r	16,0 mm
Šírka zrazenia	C	1,6 mm
Šírka zuba	h <sub>1</sub>	9,1 mm

Materiál: oceľ C 43 (UNI 7847)

Označenie	Počet z	Rozmery [mm]			Označenie	Počet z	Rozmery [mm]			Označenie	Počet z	Rozmery [mm]			Označenie	Počet z	Rozmery [mm]		
		D	H	d			D	H	d			D	H	d			D	H	d
10SA610	10	16	25	35	10SB015	15	20	30	57	10SB219	19	22	30	70	10SC522	22	35	30	80
10SA910		19			10SB215		22			10SB419		24			10SC822		38		
10SB010		20			10SB415		24			10SB519		25			10SD022		40		
10SB410		24			10SB515		25			10SB819		28			10SD222		42		
10SA611	11	16	30	37	10SB815	16	28	30	60	10SC019	20	30	30	75	10SA923	23	19	30	80
10SA811		18			10SC015		30			10SC219		32			10SB023		20		
10SA911		19			10SC215		32			10SC519		35			10SB223		22		
10SB011		20			10SC515		35			10SC819		38			10SB423		24		
10SB411	24	10SA916	19	10SD019	40	10SB523	25	10SB823	28										
10SB511	25	10SB016	20	10SD219	42	10SB823	28	10SC023	30										
10SB811	28	10SB216	22	10SA920	19	10SC023	30	10SC223	32										
10SA612	12	16	30	42	10SB416	16	24	30	60	10SB220	20	22	30	75	10SC523	23	35	30	80
10SA812		18			10SB516		25			10SB420		24			10SC823		38		
10SA912		19			10SB816		28			10SB520		25			10SD023		40		
10SB012		20			10SC016		30			10SB820		28			10SD223		42		
10SB212	22	10SC216	32	10SC020	30	10SA924	19	10SB024	20										
10SB412	24	10SC516	35	10SC220	32	10SB224	22	10SB424	24										
10SB512	25	10SC816	38	10SC520	35	10SB524	25	10SB824	28										
10SB812	28	10SA917	19	10SC820	38	10SB824	28	10SC024	30										
10SC012	30	10SB017	20	10SD020	40	10SB024	20	10SC224	32										
10SC212	32	10SB217	22	10SD220	42	10SB424	24	10SC524	35										
10SA613	13	16	30	47	10SB417	17	24	30	60	10SD220	20	42	30	80	10SC824	24	38	30	80
10SA813		18			10SB517		25			10SA921		19			10SB824		28		
10SA913		19			10SB817		28			10SB021		20			10SC024		30		
10SB013		20			10SC017		30			10SB221		22			10SC224		32		
10SB213	22	10SC217	32	10SB421	24	10SB524	25	10SC524	35										
10SB413	24	10SC517	35	10SB821	28	10SB824	28	10SD024	40										
10SB513	25	10SB817	38	10SB821	28	10SD224	42	10SB024	20										
10SB813	28	10SA918	19	10SC021	30	10SA925	19	10SB224	22										
10SC013	30	10SB018	20	10SC221	32	10SB025	20	10SB424	24										
10SC213	32	10SB218	22	10SC521	35	10SB225	22	10SB524	25										
10SA614	14	16	30	52	10SB418	18	24	30	70	10SC821	21	38	30	80	10SB824	24	38	30	80
10SA814		18			10SB518		25			10SD021		40			10SB824		28		
10SA914		19			10SB818		28			10SD221		42			10SB825		28		
10SB014		20			10SC018		30			10SA922		19			10SC025		30		
10SB214	22	10SC218	32	10SB022	20	10SC225	32												
10SB414	24	10SC518	35	10SB222	22	10SC525	35												
10SB514	25	10SC818	38	10SB422	24	10SC825	38												
10SB814	28	10SD018	40	10SB522	25	10SD025	40												
10SC014	30	10SD218	42	10SB822	28	10SD225	42												
10SC214	32	10SA919	19	10SC022	30														
10SA915	15	19	30	57	10SB019	19	20	30	70	10SC222	32								

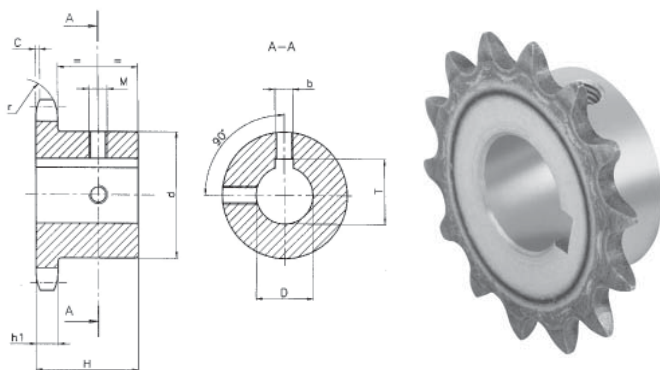
# REŤAZOVÉ KOLESÁ UPRAVENÉ

# RKS

Pre valčekovú reťaz 12B-1

Reťazové kolesá s nábojom 19,05 x 11,68 mm

3/4" x 7/16"



REŤAZ	ISO	
Rozostup	p	19,05 mm
Vnútorňá šírka	W	11,68 mm
Priemer valčeka	D	12,07 mm

## REŤAZOVÉ KOLESO

Polomer	r	19,0 mm
Šírka zrazenia	C	2,0 mm
Šírka zuba	h <sub>1</sub>	11,1 mm

Materiál: oceľ C 43 (UNI 7847)

Označenie	Počet z	Rozmery [mm]					
		D	H	d			
11SA910	10	19	30	42			
11SB010		20					
11SB410		24					
11SB510		25					
11SB810		28					
11SC010		30					
11SC210		32					
11SA911		11			19	35	46
11SB011					20		
11SB411					24		
11SB511	25						
11SB811	28						
11SC011	30						
11SC211	32						
11SA912	12		19	35	52		
11SB012			20				
11SB212			22				
11SB412		24					
11SB512		25					
11SB812		28					
11SC012		30					
11SC212		32					
11SC512		35					
11SA913		13	19			35	58
11SB013	20						
11SB213	22						
11SB413	24						
11SB513	25						
11SB813	28						
11SC013	30						
11SC213	32						
11SC513	35						
11SC813	38						
11SA914	14	19	35	64			
11SB014		20					
11SB214		22					
11SB414		24					
11SB514		25					
11SB814		28					
11SC014		30					

Označenie	Počet z	Rozmery [mm]					
		D	H	d			
11SC214	14	32	35	64			
11SC514		35					
11SC814		38					
11SD014		40					
11SA915	15	19	35	70			
11SB015		20					
11SB215		22					
11SB415		24					
11SB515		25					
11SB815		28					
11SC015		30					
11SC215		32					
11SC515		35					
11SC815		38					
11SD015	40						
11SA916	16	19	35	75			
11SB016		20					
11SB216		22					
11SB416		24					
11SB516		25					
11SB816		28					
11SC016		30					
11SC216		32					
11SC516		35					
11SC816		38					
11SD016	40						
11SB517	17	25	35	80			
11SB817		28					
11SC017		30					
11SC217		32					
11SC517		35					
11SC817		38					
11SD017		40					
11SD217		42					
11SB518		18			25	35	80
11SB818					28		
11SC018	30						
11SC218	32						
11SC518	35						
11SC818	38						

Označenie	Počet z	Rozmery [mm]		
		D	H	d
11SD018	18	40	35	80
11SD218		42		
11SB519		25		
11SB819		28		
11SC019		30		
11SC219		32		
11SC519		35		
11SC819		38		
11SD019		40		
11SD219		42		
11SD519	45			
11SD819	48			
11SE019	50			
11SB520	20	25	35	80
11SB820		28		
11SC020		30		
11SC220		32		
11SC520		35		
11SC820		38		
11SD020		40		
11SD220		42		
11SD520		45		
11SD820		48		
11SE020	50			
11SB521	21	25	40	90
11SB821		28		
11SC021		30		
11SC221		32		
11SC521		35		
11SC821		38		
11SD021		40		
11SD221		42		
11SD521		45		
11SD821		48		
11SE021	50			
11SB522	22	25	40	90
11SB822		28		
11SC022		30		
11SC222		32		
11SC522		35		

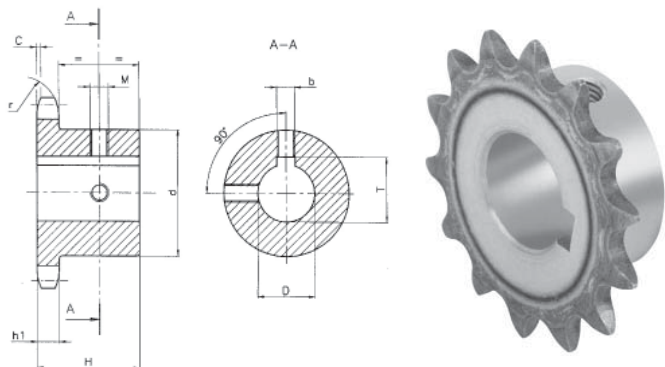
Označenie	Počet z	Rozmery [mm]		
		D	H	d
11SC822	22	38	40	90
11SD022		40		
11SD222		42		
11SD522		45		
11SD822		48		
11SE022	50			
11SB523	23	25	40	90
11SB823		28		
11SC023		30		
11SC223		32		
11SC523		35		
11SC823		38		
11SD023		40		
11SD223		42		
11SD523		45		
11SD823		48		
11SE023	50			
11SB524	24	25	40	90
11SB824		28		
11SC024		30		
11SC224		32		
11SC524		35		
11SC824		38		
11SD024		40		
11SD224		42		
11SD524		45		
11SD824		48		
11SE024	50			
11SB525	25	25	40	90
11SB825		28		
11SC025		30		
11SC225		32		
11SC525		35		
11SC825		38		
11SD025		40		
11SD225		42		
11SD525	45			
11SD825	48			
11SE025	50			

# REŤAZOVÉ KOLESÁ UPRAVENÉ

# RKS

Pre valčekovú reťaz 16B-1

Reťazové kolesá s nábojom 25,4 x 17,02 mm



1" x 17,02 mm

REŤAZ ISO  
 Rozostup p 25,4 mm  
 Vnútna šírka W 17,02 mm  
 Priemer valčeka D 15,88 mm

REŤAZOVÉ KOLESO

Polomer r 26,0 mm  
 Šírka zrazenia C 2,5 mm  
 Šírka zuba h<sub>1</sub> 16,2 mm

Materiál: oceľ C 43 (UNI 7847)

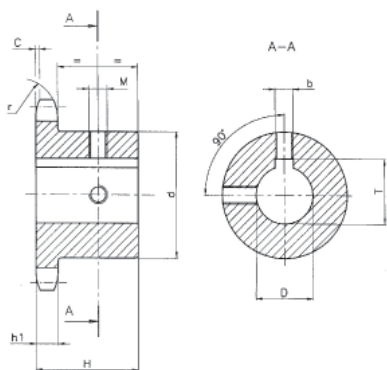
Označenie	Počet z	Rozmery [mm]			Označenie	Počet z	Rozmery [mm]			Označenie	Počet z	Rozmery [mm]			Označenie	Počet z	Rozmery [mm]		
		D	H	d			D	H	d			D	H	d			D	H	d
12SB511	11	25	40	61	12SC015	15	30	40	92	12SD818	18	48	45	100	12SC822	22	38	50	110
12SB811	11	28	40	65	12SC215	15	32	40	92	12SE018	18	50	45	100	12SD022	22	40	50	110
12SC011	11	30	40	67	12SC515	15	35	40	92	12SB519	19	25	45	100	12SD222	22	42	50	110
12SC211	11	32	40	69	12SC815	15	38	40	92	12SB819	19	28	45	100	12SD522	22	45	50	110
12SC511	11	35	40	69	12SD015	15	40	40	92	12SC019	19	30	45	100	12SD822	22	48	50	110
12SC811	11	38	40	69	12SD215	15	42	40	92	12SC219	19	32	45	100	12SE022	22	50	50	110
12SD011	11	40	40	69	12SD515	15	45	40	92	12SC519	19	35	45	100	12SB523	23	25	50	110
12SD211	11	42	40	69	12SD815	15	48	40	92	12SC819	19	38	45	100	12SB823	23	28	50	110
12SB512	12	25	40	69	12SE015	15	50	40	92	12SD019	19	40	45	100	12SC023	23	30	50	110
12SB812	12	28	40	69	12SB516	16	25	45	100	12SD219	19	42	45	100	12SC223	23	32	50	110
12SC012	12	30	40	69	12SB816	16	28	45	100	12SD519	19	45	45	100	12SC523	23	35	50	110
12SC212	12	32	40	69	12SC016	16	30	45	100	12SD819	19	48	45	100	12SC823	23	38	50	110
12SC512	12	35	40	69	12SC216	16	32	45	100	12SE019	19	50	45	100	12SD023	23	40	50	110
12SC812	12	38	40	69	12SC516	16	35	45	100	12SB520	20	25	45	100	12SD223	23	42	50	110
12SD012	12	40	40	69	12SC816	16	38	45	100	12SB820	20	28	45	100	12SD523	23	45	50	110
12SD212	12	42	40	69	12SD016	16	40	45	100	12SC020	20	30	45	100	12SD823	23	48	50	110
12SB513	13	25	40	78	12SD216	16	42	45	100	12SC220	20	32	45	100	12SE023	23	50	50	110
12SB813	13	28	40	78	12SD516	16	45	45	100	12SC520	20	35	45	100	12SB524	24	25	50	110
12SC013	13	30	40	78	12SD816	16	48	45	100	12SC820	20	38	45	100	12SB824	24	28	50	110
12SC213	13	32	40	78	12SE016	16	50	45	100	12SD020	20	40	45	100	12SC024	24	30	50	110
12SC513	13	35	40	78	12SB517	17	25	45	100	12SD220	20	42	45	100	12SC224	24	32	50	110
12SC813	13	38	40	78	12SB817	17	28	45	100	12SD520	20	45	45	100	12SC524	24	35	50	110
12SD013	13	40	40	78	12SC017	17	30	45	100	12SB820	20	48	45	100	12SC824	24	38	50	110
12SD213	13	42	40	78	12SC217	17	32	45	100	12SE020	20	50	45	100	12SD024	24	40	50	110
12SD513	13	45	40	78	12SC517	17	35	45	100	12SB521	21	25	50	110	12SD224	24	42	50	110
12SD813	13	48	40	78	12SC817	17	38	45	100	12SB821	21	28	50	110	12SD524	24	45	50	110
12SE013	13	50	40	78	12SD017	17	40	45	100	12SC021	21	30	50	110	12SD824	24	48	50	110
12SB514	14	25	40	84	12SD217	17	42	45	100	12SC221	21	32	50	110	12SE024	24	50	50	110
12SB814	14	28	40	84	12SD517	17	45	45	100	12SC521	21	35	50	110	12SB525	25	25	50	110
12SC014	14	30	40	84	12SD817	17	48	45	100	12SC821	21	38	50	110	12SB825	25	28	50	110
12SC214	14	32	40	84	12SE017	17	50	45	100	12SD021	21	40	50	110	12SC025	25	30	50	110
12SC514	14	35	40	84	12SB518	18	25	45	100	12SD221	21	42	50	110	12SC225	25	32	50	110
12SC814	14	38	40	84	12SB818	18	28	45	100	12SD521	21	45	50	110	12SC525	25	35	50	110
12SD014	14	40	40	84	12SC018	18	30	45	100	12SD821	21	48	50	110	12SC825	25	38	50	110
12SD214	14	42	40	84	12SC218	18	32	45	100	12SE021	21	50	50	110	12SD025	25	40	50	110
12SD514	14	45	40	84	12SC518	18	35	45	100	12SB522	22	25	50	110	12SD225	25	42	50	110
12SD814	14	48	40	84	12SC818	18	38	45	100	12SB822	22	28	50	110	12SD525	25	45	50	110
12SE014	14	50	40	84	12SC018	18	40	45	100	12SC022	22	30	50	110	12SD825	25	48	50	110
12SB515	15	25	40	92	12SD018	18	42	45	100	12SC222	22	32	50	110	12SE025	25	50	50	110
12SB815	15	28	40	92	12SD218	18	44	45	100	12SC522	22	35	50	110					
					12SD518	18	45	45	100										

# REŤAZOVÉ KOLESÁ UPRAVENÉ

# RKS

Pre valčekovú reťaz 20B-1

Reťazové kolesá s nábojom 31,75 x 19,56 mm



1" x 1/4 x 3/4"

REŤAZ	ISO
Rozostup p	31,75 mm
Vnútna šírka W	19,56 mm
Priemer valčeka D	19,05 mm

### REŤAZOVÉ KOLESO

Polomer r	32,0 mm
Šírka zrazenia C	3,5 mm
Šírka zuba h <sub>1</sub>	18,5 mm

Materiál: oceľ C 43 (UNI 7847)

Označenie	Počet z	Rozmery [mm]		
		D	H	d
13SB509	9	25	40	63
13SC009		30		
13SC209		32		
13SC509		35		
13SC809		38		
13SB510	10	25	40	70
13SC010		30		
13SC210		32		
13SC510		35		
13SC810	38			
13SB511	11	25	45	77
13SB811		28		
13SC011		30		
13SC211		32		
13SC511		35		
13SC811		38		
13SD011		40		
13SD211		42		
13SD511		45		
13SE011		50		
13SF011		60		
13SB512	12	25	45	88
13SB812		28		
13SC012		30		
13SC212		32		
13SC512		35		
13SC812		38		
13SD012		40		
13SD212		42		
13SD512		45		
13SD812		48		
13SE012		50		
13SF012		60		
13SB513	13	25	45	98
13SB813		28		
13SC013		30		

Označenie	Počet z	Rozmery [mm]		
		D	H	d
13SC213	13	32	45	98
13SC513		35		
13SC813		38		
13SD013		40		
13SD213		42		
13SD513		45		
13SD813		48		
13SE013		50		
13SF013		60		
13SC214		14		
13SC514	35			
13SC814	38			
13SD014	40			
13SD214	42			
13SD514	45			
13SC814	48			
13SE014	50			
13SF014	60			
13SC215	15		32	45
13SC515		35		
13SC815		38		
13SD015		40		
13SD215		42		
13SD515		45		
13SD815		48		
13SE015		50		
13SF015		60		
13SC816		16	38	
13SD016	40			
13SD216	42			
13SD516	45			
13SD816	48			
13SE016	50			
13SF016	60			
13SF516	65			
13SG016	70			

Označenie	Počet z	Rozmery [mm]		
		D	H	d
13SC817	17	38	50	120
13SD017		40		
13SD217		42		
13SD517		45		
13SD817		48		
13SE017		50		
13SF017		60		
13SF517	65			
13SG017	70			
13SC818	18	38	50	120
13SD018		40		
13SD218		42		
13SD518		45		
13SD818		48		
13SE018		50		
13SF018		60		
13SF518	65			
13SG018	70			
13SC819	19	38	50	120
13SD019		40		
13SD219		42		
13SD519		45		
13SD819		48		
13SE019		50		
13SF019		60		
13SF519	65			
13SG019	70			
13SC820	20	38	50	120
13SD020		40		
13SD220		42		
13SD520		45		
13SD820		48		
13SE020		50		
13SF020		60		
13SF520	65			
13SG020	70			