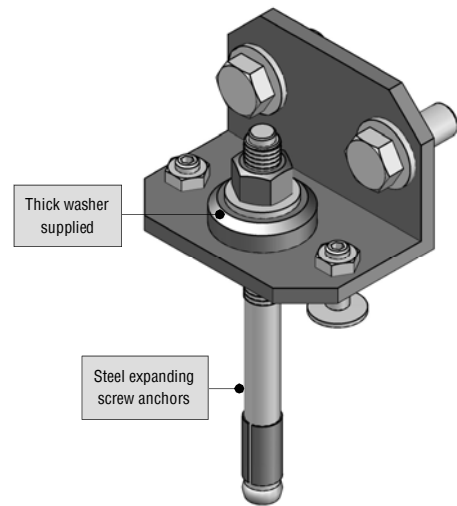
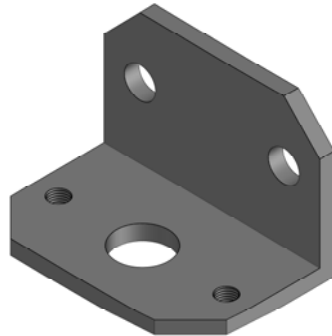


art.SAR/FR..

**RIGID ANTI-TIP BRACKET.**

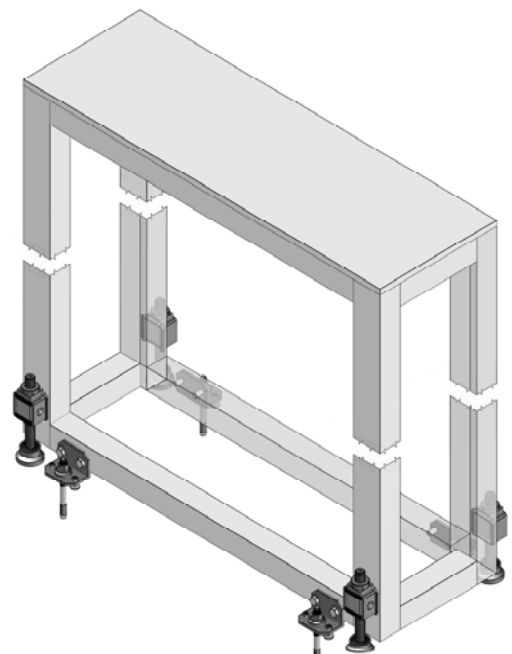
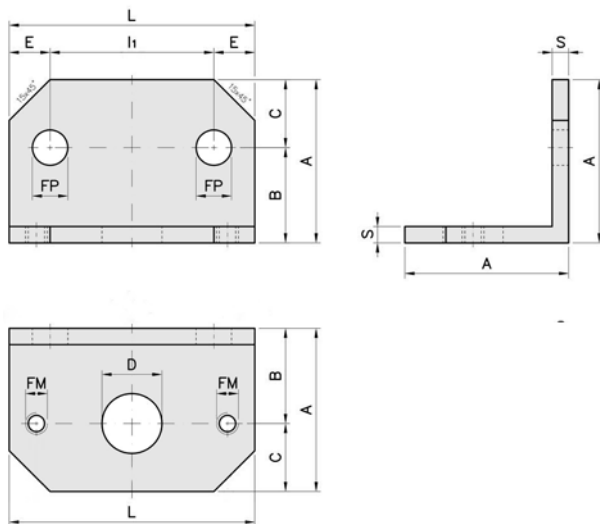
These brackets are a simple and economic solution to apply to machinery/equipment that, after being levelled with our levelling Stabilisers, need to be **protected from possible tipping** caused by factors such as the machinery itself (for example if it is very tall and narrow) or by external forces such as accidental bumping or lateral forces( such as wind etc). The bracket is fixed to the machine by connecting bolts, whilst fitting to the floor is achieved by using steel expanding screw anchors, thus forming a "rigid" and safe anchor. The two bolts (one on each side of the screw anchor) act as distance adjusters of the Bracket to the floor in that once the machine was levelled the Bracket might also need to be adjusted for positioning on the floor.

The bracket is made from iron (Fe) and nitrided for protection that allows for better wear and resistance to weathering and oxidation. The bolts and expanding screw anchors are in zinc plated steel and we supply them as accessories for the bracket itself.



Example of application using Anti-Tip brackets.

Diagram of Anti-Tip Bracket.



**Symbols:**

- I<sub>1</sub>** = distance between the two holes for fitting the Bracket to the machine.
- D** = diameter of the hole for passing the expanding screw anchor for fixing the machine to the floor.
- FM** = 2 threaded holes with bolts for adjusting the height of the Bracket on the floor.

Mod.	CODE	ARTICLE	A	L	S	I <sub>1</sub>	FP	STEEL EXPANDING SCREW ANCHORS	FM	D	B	C	E	WEIGHT Kg
20/40	2AC012040	SAR/FR20/40	60	90	6	60	13	M12x150	M8	22	35	25	15	0,430
45/60	2AC014560	SAR/FR45/60	80	120	10	85	17	M16x190	M10	25,5	45	35	17,5	1,250